



FOCUSED ON FUTURES

JULIE MILBURN

PRINCIPAL AND
CHIEF EXECUTIVE



WELCOME TO SPARSHOLT

Welcome to Sparsholt, our idyllic countryside campus offering specialist technical study programmes and apprenticeships which will pave your path to success in your chosen career.

Our focus is on you, our learners. We invest consistently in high quality facilities to provide an environment where you can learn effectively and develop skills relevant to today and tomorrow, ensuring you're prepared to face global challenges ahead. Sparsholt values diversity and inclusion, and we're committed to supporting every learner's unique journey towards achieving their goals.

Our faculties bring real-world experience and industry links to your education, equipping you with the practical skills essential for the workplace or higher education. We're also dedicated to sustainability and green

technology, reflecting a community spirit that runs throughout the campus and on-site accommodation, fostering connections between students and teachers.

As the world changes, so do the ways we teach and the courses we offer. Sparsholt remains at the forefront of education, ensuring that you're prepared for the future job market. With your passion and dedication combined, we're shaping a collective future where your ambitions can thrive, your potential is realised, and together, we contribute to a more sustainable and impactful world.

Sparsholt is committed to offering students innovative facilities alongside academic staff who are experts in their industries. This mix ensures a foundation for success that paves the way towards higher education and job opportunities.

Our students are driven, respectful and committed to both their field and personal growth. Their dedication enables us to stand among the top Land-based colleges in the nation, a fact we take great pride in.

MARK TREAGUST

VICE PRINCIPAL (CURRICULUM) SPARSHOLT CAMPUS



CONTENTS

Welcome	2
Experience more at Sparsholt	6
Focused on a Sustainable Future	8
Explore Sparsholt	11
Planning My Future	12
Enjoy Sparsholt	14
Study Plus	16
Student Wellbeing Support	18
Learning Support	22
Careers	24
Industry Placements	26
T Levels	28
Learning Resources	30
Choosing the Right Level	32
Degrees at Sparsholt	34
Apprenticeships	36
Courses	38
Money Matters	156
Financial Support	158
How to find us	162

Access to Higher Education	38
Agriculture	40
Animal Studies	52
Arboriculture, Forestry and Woodland Management	64
Conservation, Countryside and the Environment (Land and Wildlife)	72
English and Maths	80
Equine Studies	84
Fishery Studies & Aquatics (Land and Wildlife)	92
Foundation Learning	100
Game and Wildlife Management (Land and Wildlife)	108
Horticulture	116
Motor Vehicle	124
Outdoor Adventure	132
Sport	138
Uniformed Protective Services	150





SUSTAINABILITY IS AT THE HEART OF EVERYTHING WE DO

This prospectus is printed on FSC certified paper, using an innovative low-energy drying process. We have also reduced the number of copies printed. This publication is fully recyclable.

EXPERIENCE MORE @SPARSHOLT_COLL

Sparsholt students get to experience new technologies and environments with so many activities and visits. Our social media will show you more, and you can see Sparsholt through our students' eyes on Instagram with #studentview



@SparsholtCollege



@sparsholt_coll



@sparsholt_coll



@SparsholtCollege



Gold Medal and Best Discovery Exhibit for 'Rustic Recipes Reimagined' at RHS Chelsea Flower Show 2023! This exciting accolade is Sparsholt College's tenth Gold medal, adding to the collection of five Silver-Gilt medals, six Silver medals and three Bronze medals, alongside seven 'Best in Category' awards.



Houseplant Jungle learners in the Foundation department have made a completely sustainable compost bin using hazel branches cut on campus. They have then filled it with material gathered on site, including coffee grounds from Starbucks, fallen leaves, toilet roll tubes and green waste. What a great way to encourage sustainability!



WE ALSO LOVE TO KEEP IN TOUCH WITH OUR ALUMNI AND SHARE WHERE THEY ARE NOW!



Sparsholt College celebrated 50 years of delivering top-quality Game and Wildlife qualifications to students with an anniversary conference full of industry experts, a student from every year of the course and fascinating guest speakers that included a look back at previous courses and an overview of the current Game and Wildlife Management courses now being offered at Sparsholt, along with what the future may hold.



Level 1 Motor Vehicle students took a trip to Mercedes World recently. They had a go on the racing simulator and the students really enjoyed themselves.



Our Level 3 first-year Animal Management students have created some lemur enrichment in their zoo mammal husbandry class. They cut some browse (hawthorn, beech, field maple) and made some hanging enrichment for our black and ring-tailed lemurs. Browse is an important part of the lemur's diet and it encourages natural foraging behaviours as well as giving them dietary variation.



To celebrate #NationalButcheryWeek we were delighted to share the news that Gary Levey, butchery lecturer at Sparsholt College, has been awarded the status of "Institute of Meat Accredited Master Butcher." Gary has been a Butcher for 30 years and is honoured to be named the 61st Master Butcher in the world, which will remain in his name for the rest of time.



FOCUSED ON A SUSTAINABLE FUTURE

COMING SOON – ROBOTIC DAIRY

This advanced robotic milking system will provide vital management information as well as focusing on animal welfare, food safety, efficiency and profitability.



TAKE YOUR FUTURE TO THE NEXT LEVEL

We're excited about offering new T Levels at Sparsholt Campus – along with multi-million-pound investment in our facilities to support their success.

- ↑ Livestock Production
- ↑ Crop Production
- ↑ Land Based Engineering
- ↑ Ornamental Horticulture
- ↑ Trees and Woodland
- ↑ Animal Care and Management
- ↑ Animal Care and Science



**SCAN TO FIND
OUT MORE**

Arboriculture and Forestry learners have been enhancing their skills utilising the latest equipment.

Our new Sonic Tomographer is used for identifying possible decay in trees. Sensors are placed around the tree which measure sound waves created by a wirelessly connected hammer, to measure the density of the timber. The results are received by a laptop, which generates a pictorial representation of any cavities or rot.



Utilising GPS and field mapping,

Agriculture students are able to accurately apply the correct levels of fertiliser to ensure the soil is not contaminated – this also ensures cost-effective application.



Horticulture students have supported the redevelopment of apiaries within our orchard and have recently tasted the first batch of Sparsholt honey, whilst also developing an understanding of the wider sustainable benefits of the project.



Game and Wildlife students demonstrated the latest thermal imaging equipment and digital remote cameras to over 1,400 school visitors as part of our Sparsholt Futures event.

Motor Vehicle students learn about alternative fuel systems and how fossil fuel technology has developed over recent years, working on our Nissan Leaf electric vehicle.





EXPERIENCE SPARSHOLT AT AN OPEN EVENT

The best way to find out about Sparsholt is to experience it for yourself! At our Open Events you can tour our amazing campus facilities and get a real taste of our courses. Meet our friendly students and expert staff, find out about transport, finance, learning support, accommodation, and get to know us!

SATURDAY 7 OCTOBER 2023

SATURDAY 11 NOVEMBER 2023

SATURDAY 3 FEBRUARY 2024

SATURDAY 2 MARCH 2024

WEDNESDAY 1 MAY 2024

THURSDAY 13 JUNE 2024



Equine Centre with Rider Performance Studio and Racewood eventing simulator, indoor and outdoor arenas, cross country trail, horse walker and extensive stabling

Game and Wildlife Centre

126 hectare farm including dairy, beef, sheep, pigs and arable enterprises

Aquatic Research and Conservation Centre housing a range of exotic and warm water aquatic species

In-house sawmill and driving plot

Industry-standard Veterinary Nursing Training Centre

One hectare lake

Salmonid Rearing and Nutrition Trials Centre

Sika Deer Herd plus semi-natural ancient woodland and chalk grassland

Indoor and outdoor Rifle Ranges

Sports Centre with a full size sports hall, climbing wall, gym, fitness suite and sprung-floor dance studio

Wellbeing Team and Support Hub

Student Accommodation – rated 'Outstanding' again by Ofsted in 2022

Four football pitches

College shop and restaurants around campus

COMING SOON – NEW ROBOTIC DAIRY

Award winning, high yielding,
Dairy Unit

EXPLORE SPARSHOLT

A campus in the countryside just four miles from the city of Winchester with all the resources you need to succeed.

Library and DigiHub with specialist print and online resources, excellent IT facilities and knowledgeable staff who are on hand to support with your studies

Animal Health and Welfare Research Centre, opened by HRH The Princess Royal, with BIAZA zoo licence, home of the National Zoo Academy and nationally recognised for its collection

BBC Radio 4 Gardeners' Question Time garden and the famous 'Potting Shed'

Engineering Centre

Specialist industry standard laboratories and equipment

Five hectares dedicated to horticultural practice including tropical glasshouse and an established orchard

ALWAYS CHECK OUR WEBSITE FOR THE LATEST EVENT INFORMATION



SEE SPARSHOLT.AC.UK

for further information, dates and
times of our upcoming Open Events
and to book your place.



Residential Services

PLANNING MY FUTURE

Where do you want to be in the future? Doing a job you love, studying at university or running your own business? **GET INSPIRED** and use this space to make some notes about what interests you and any careers questions you may have.



Choose the course area you're interested in, do some **RESEARCH** and check the entry requirements to see which level is best for you.



We have Open Events throughout the year so you can **VISIT** our beautiful campus for yourself and meet our expert tutors and students! Find out more at sparsholt.ac.uk



We'll invite you to our **APPLICANT WELCOME EVENTS** – you can see your subject facilities as well as meet your tutors and classmates-to-be!



It's easy to **APPLY ONLINE** at sparsholt.ac.uk



You'll be invited to **ENROL** just after GCSE results day (we'll contact you in the summer with the details).



Once you're **ON THE COURSE** our Flying Start programme means there's lots of flexibility in your first few weeks. We give you time and support to make sure you're on the right course and level.



TRIPS AND VISITS from industry experts provide information about careers after college and **STUDY TOURS** are educational and fun.



Gain the **SPARSHOLT CERTIFICATE** if you demonstrate outstanding attendance, effort, engagement and have immersed yourself in College life by taking part in further activities and events as part of the Study Plus programme.



PROGRESS COACHES provide support throughout your course, helping you to plan your future.



ADDITIONAL OPTIONAL QUALIFICATIONS could boost your employability with practical skills for your future.



We love to **CELEBRATE ACHIEVEMENT** and keep in touch with our students. Many progress on to University Centre Sparsholt and other universities, and they often return to inspire our current learners!

NOTES



SUPPORT WITH NEXT STEPS



Our Careers Team can support with next steps such as UCAS applications, employment search and interview preparation.

Complete a full Level 3 qualification with us and we'll guarantee you a place on one of our relevant University Centre Sparsholt degree courses.*

*Admissions Terms & Conditions apply – for full details go to sparsholt.ac.uk/university-centre

ENJOY SPARSHOLT

There is so much to being a Sparsholt student – fun things to do, great places to eat and sociable accommodation. Whether you live on campus or travel in every day, there is always something going on.

ON-SITE ACCOMMODATION

Each year around 400 students make our on-site accommodation their home. Our residential provision was recently again rated as 'OUTSTANDING' by Ofsted, so you'll be well looked after by our 24-hour Residential Support team.

Depending on your age, you can choose between a range of en-suite and shared facilities with an inclusive meal package.

Visit sparsholt.ac.uk/the-college/accommodation for more information on fees and the financial support available to help towards accommodation costs; bursaries are also available.

CATERING ON CAMPUS

Pick from a full range of sandwiches and snacks or get a takeaway Costa at our shop. Our Café has breakfast, lunch and dinner available, along with a Starbucks outlet. Our on-site bar is open in the evenings with soft drinks, milkshakes and alcohol (strictly for the over 18s) and Joe De Frango, our very own Peri Peri Chicken restaurant is right next door, where you can grab a bite to eat too.

STRUGGLING WITH TRANSPORT OR ACCOMMODATION COSTS?

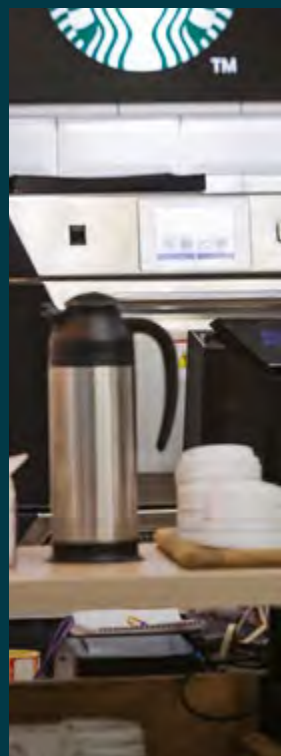
Find out more about bursaries on page 158.

OUR CAMPUS

With a fully equipped gym and sports centre, a purpose built 8m x 30m indoor climbing wall, sports fields for football and lots of space for **FUN AND FITNESS** on our beautiful campus, now is the time to get involved and keep fit!

LIFE AT SPARSHOLT

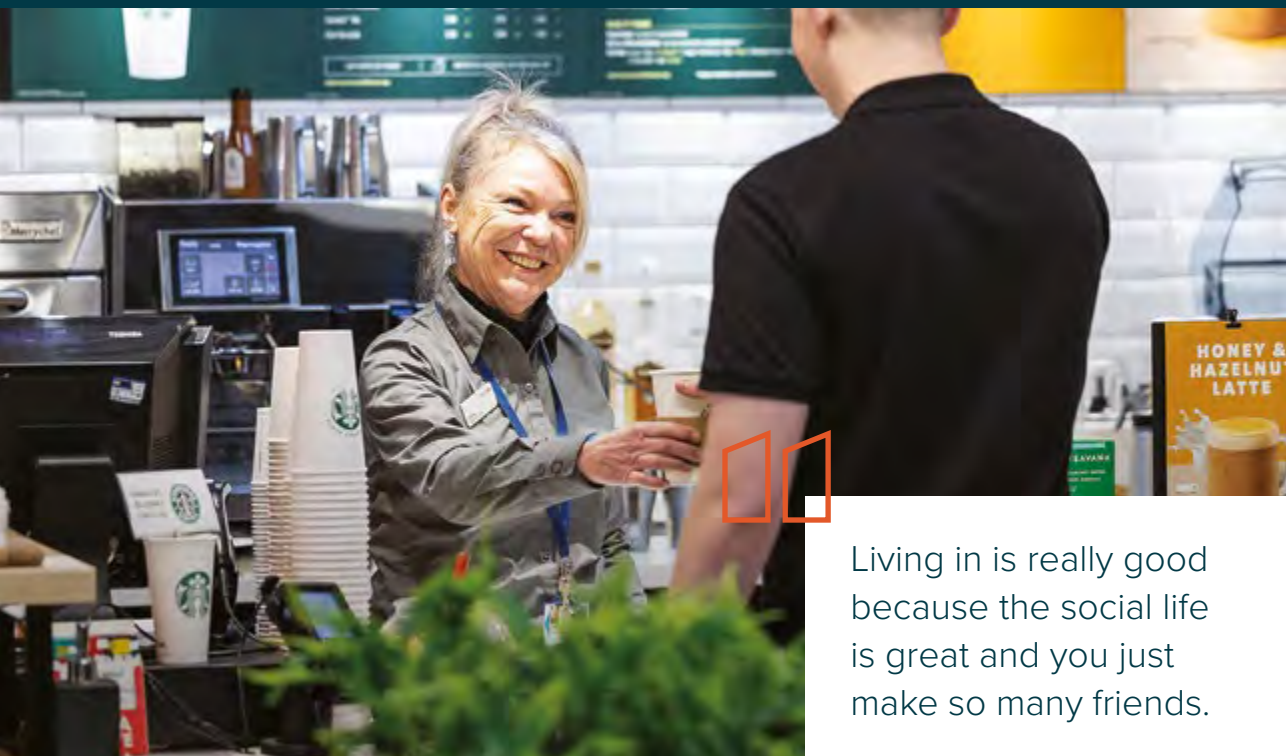
Close to the historic city of Winchester, Stonehenge, on the edge of the New Forest and just an hour from London, Sparsholt College's reputation attracts **INTERNATIONAL STUDENTS** from across the world. See page 156 for information about fees and eligibility.





Ofsted
Outstanding
Provider

Our residential provision is rated as 'outstanding' by Ofsted



Living in is really good because the social life is great and you just make so many friends.

STUDY+

Study Plus is what makes your Study Programme unique to you. It includes any extra qualifications that are offered in your programme area, for example tractor driving, chainsaw maintenance, progressive horse-riding tests, as well as trips and opportunities in industry. It also includes any societies you may join or run, the college tutorial programme and any lunchtime or evening events/clubs you may join. It is a chance to make new friends and develop new interests.

WHY IS STUDY PLUS IMPORTANT?

Employability – It extends your CV and develops the vital skills that employers are looking for when recruiting.

University readiness – It prepares you for university life and makes you stand out on your UCAS applications.

Wellbeing – It enables you to look after your wellbeing by giving yourself time for having fun with friends and connecting with others.

Have fun – You can learn a new hobby or share your passions with others!

Whatever your interests there is a chance to set up a society. This is a great opportunity to further your current interests or develop new ones!

You could explore your future with career workshops and university trips, get active on our climbing wall or walking the nature trails around campus, express your creativity in our college magazine or photography society, or learn a new skill such as British Sign Language or by joining the Student Government.



SPARSHOLT CERTIFICATE

Gain the Sparsholt Certificate if you demonstrate outstanding attendance, effort, engagement and have also immersed yourself in College life by taking part in further activities and events as part of the Study Plus programme!



STUDENT EVENTS

Sparsholt students are also invited to a number of events for example Freshers Fayre in the Autumn, WellFayre in the Spring, and Pride in the Summer term.

Plus, there are termly party nights held in our student bar, charity events, and more!

STUDENT WELLBEING SUPPORT

Starting college and studying a subject you are passionate about is exciting but it can be daunting too. We know how important it is to stay focused on your studies but recognise that life can get in the way sometimes.

That's why we have a highly experienced Student Wellbeing Team to ensure you are able to cope with any obstacles life throws at you. The team includes specialist wellbeing practitioners as well as a counsellor and a nurse. The team are dedicated to listening and empowering you to resolve any challenges you might face to enable you to be as successful as possible at college and beyond.

The Wellbeing Team is focused on enabling learners to become increasingly independent, with the resilience to cope with the challenges they face now and in the future. The Wellbeing Team provide our students with additional support and information to help with any worries or difficulties you have which are affecting your time at college including:

- Emotional health and wellbeing
- Relationships
- Supporting Children in Care (CiC)
- Supporting young carers
- Bursary forms and student funding
- Home
- Alcohol and drugs
- Medical healthcare plans
- Sexual health information





OUR SPECIALIST TEAM

Our specialist team are always on hand to help and support students, if you have any concerns or need support please contact wellbeingteamsparsholt@sparsholt.ac.uk for further details.





PROGRESS COACHES

You will be allocated your own Progress Coach when you start college. The Progress Coach's sole responsibility is to ensure that you have all the support required to fulfil your potential.

We believe in appointing experts to the role who will liaise with teaching staff and the Wellbeing Team to provide tailored support.

Your Progress Coach will help you with any issues you have and will provide the coaching you need to succeed. The role also offers extensive support for Higher Education, employment and social welfare.



WELLBEING HUB

Our new Support hub includes a wellbeing lounge, counselling room, medical treatment room, meeting rooms and is staffed throughout the college day. It is a safe space which fosters positive wellbeing and personal growth and independent self-help strategies.

WELLBEING TIPS

- Balance studying with other activities you enjoy
- Accept yourself! Don't compare yourself to others
- Keep in touch with friends and family
- Unplug from technology every now and then
- Focus on the effort you put in more than the outcome
- Maintain a healthy, balanced diet for optimum wellbeing
- Talk and share your feelings.
It doesn't help keeping them bottled up
- Make time for rest and keep a good sleeping pattern
- Reward and treat yourself when good things happen

LEARNING SUPPORT

We have a dedicated Learning Support Team, who want to help you reach your potential. The team includes:

- Learning Support Workers
- Key Workers
- Team Leaders
- SpLD Assessor/Specialist
- SEN Officer



All students with an Education, Health and Care Plan will be allocated a key worker and will have weekly sessions to help reach EHCP outcomes. We work closely with the learner's local authority to access all aspects of the services available in the area.

We prepare learners for adulthood, including employment, independent living and accessing the local community. Person-centred reviews are carried out to help set aspirational goals.

Within the Support Hub we have a drop in lounge area, which is always supported, access to computers and 1:1 rooms.

We aim to remove barriers to learning ensuring students achieve their outcomes. All of our support programmes are personalised to meet the needs of the learner as well as fostering independence in learning.

Our staff work across the college teams, organising and implementing a wide range of support programmes, each tailored to the learner.

SUPPORT COULD INCLUDE:

- In-class support
- One-to-one support sessions
- Study and assignment workshops
- Access arrangements
- Assistive technology

We also work closely with a variety of different partner agencies to ensure the best experience for our students. If you would like further information on the support we can offer please contact **EHCPsparsholt@sparsholt.ac.uk**

CAREERS



We are serious about preparing students for life after college. We want each student to aim high.

No matter what your goal is – university, apprenticeship or full-time employment, we will support you every step of the way. We do understand that some students are unsure, so we actively encourage exploration through a range of career activities including:

- Uni-Bound – Higher Education Progression event
- Employer and industry insight talks
- Careers-themed Futures, Choices and Insights weeks
- UCAS Trips
- OxBridge representative talk
- Apprenticeship information sessions

In addition, each student can expect specialist support with:

- The UCAS application process
- Personal statements
- Employability skills
- CV Checks
- Apprenticeship search and application

Students can book an hour long 1:1 appointment with the Careers Advisor or the Southern University Network Progression Mentor.

Those with a quick careers query can stop in to the Careers Hub during one of our designated drop-in sessions. In terms of online resources, students have access to the eClips and Pathways Career platforms, and the Careers Hub information pages on our intranet.

**FOR MORE INFORMATION GO TO
SPARSHOLT.AC.UK/CAREERS-SUPPORT**





MATURE STUDENTS

We have lots of mature students due to the specialist nature of the courses we offer. Whether you're returning to study or choosing to retrain with our expert staff in our industry-standard facilities, you will not be alone. Come along to an Open Event to discuss the course and your qualifications and experience, funding such as an Advanced Learner Loan, and whether your work experience can count towards your qualification.

INDUSTRY PLACEMENTS



Depending on whether you will be undertaking one of our new T Level qualifications or the existing Technical Level 3 qualifications, full-time land-based students aged 16–18 will either complete a mandatory industry placement(s) or a shorter-term block of work experience with a relevant external employer or voluntary organisation to complement your studies. This will provide you with opportunities to:

- Apply the knowledge learned at college to the workplace
- Improve your communication, teamwork, confidence and problem-solving skills
- See how a business operates in the real world
- Identify key technical strengths and skills you will need at work
- Test your career choices and aspirations
- Line up an employer reference and achieve an additional college certificate for future use
- Develop your placement into part-time work alongside your studies and/or full-time employment with your employer once you have completed your time with us

For students undertaking industry placement activity, one dedicated placement day per week will form a part of your weekly timetable across the academic year. Where employers can support this, you can also utilise weekends and holiday periods to achieve the minimum placement hours required for your course. For students completing block-week placements, you will be given time in your college calendar to complete the awarding body hours requirement for your course. Industry Placement and Curriculum staff will be here to support you from start to finish, with a combination of onsite placement visits and classroom sessions through the year to monitor progress with your placement activity and the logging and recording of your hours and experiences.

Get ahead of the rest and get your industry placement sorted before you start your course with us!

See more information about this on the Industry Placement pages on our website **sparsholt.ac.uk/industry_placements**

If you have any questions or would like some further assistance with your search, please email the team **ip@sparsholt.ac.uk** and we will be happy to help.

Look out for this symbol
on course pages!





MY FUTURE IN FOCUS



With Sparsholt you also have the great opportunity of an industry placement. I'm going to Calverton Fish Farm and this will help me network in the industry and gain contacts for the future.

FRASER

LAND AND WILDLIFE STUDENT

WELCOME TO THE NEXT LEVEL

We are excited to introduce new T Levels into our wide variety of qualifications on offer at Sparsholt Campus. T Levels are a new, two year qualification developed in collaboration with employers to meet the needs of industry and prepare students for work.

SUBJECTS INCLUDED

↗ Livestock Production	Page 48
↗ Crop Production	Page 48
↗ Land Based Engineering	Page 49
↗ Ornamental Horticulture	Page 122
↗ Trees and Woodland	Page 70
↗ Animal Care and Management	Page 62
↗ Animal Care and Science	Page 62

NATIONALLY RECOGNISED

When you complete your T Level you will gain a nationally-recognised certificate which shows your overall grade. You will also receive an overview of the work you have completed during your T Level as evidence to help with future employment.

GAIN UCAS POINTS

T Levels also carry UCAS points, meaning that if you finish your qualification with a grade Distinction*, it is worth the same as 3 A Levels at A*. Please see page 33 for further information.



INVESTING IN YOUR FUTURE

With £2.2 million investment, Sparsholt Campus will see the installation of a new Robotic Milking Parlour and the development of Agricultural Technologies. The investment will allow learners to complete technical qualifications in Livestock Farming, Arable Farming, Land-based Engineering, Tree and Woodland Management, and Ornamental Horticulture specialisms.

"The introduction of T Levels is an exciting time; with new qualifications which meet the needs of local employers... The College Group is grateful for this investment from the Department for Education which will provide us with continued investment in the modern industry standard facilities that our learners need and deserve."

JULIE MILBURN, PRINCIPAL AND CEO



**READ MORE ABOUT
OUR T LEVELS**

CUTTING-EDGE LEARNING RESOURCES

Our DigiHub is an innovative, dedicated space designed to support students and staff to develop their digital skills ready for the future, preparing them for an ever-changing digital landscape with workshops, demonstrations and one-to-one bespoke sessions.

Based in the Library, the DigiHub features a selection of digital equipment such as interactive touchscreen boards, immersive technologies (Virtual and Augmented Reality) and video production equipment, all to enrich our learning and teaching experiences at the college.

The Library holds a wide range of high-quality resources to assist you with your studies, including specialist books and magazines, eBooks and online journals. Our friendly and knowledgeable staff are available to help you find the most suitable resources, and can deliver bespoke workshops or individual support sessions. You can use one of our drop-in computers for research, enjoy our group work area or focus on your work in an individual study space.





YOUR TECH TOOLKIT

Our online resources can be accessed 24/7, on and off-campus, with one simple login. Our Library and DigiEd teams can also support you with password resets and other IT queries.



MOODLE/MICROSOFT 365

Your Virtual Learning Environment including Moodle and Microsoft 365 where you can also communicate with your teachers and progress coaches.



DISCOVERY

Access our library catalogue, ebooks, videos and thousands of online journals through one easy access platform.



TECH ACCESS AND SUPPORT

Access PCs and laptops within the library and receive support with your resource needs from our Learning Resources Team.

CHOOSING THE RIGHT LEVEL

Please check individual courses for entry requirements.

LEVEL 3

Advanced Technical Diploma/Extended Diploma

DIPLOMA – 1 YEAR

Could lead to: Advanced Technical Extended Diploma, university or employment including apprenticeships.

EXTENDED DIPLOMA – 2 YEARS

Could lead to: University or employment including apprenticeships.

T LEVEL – 2 YEARS

Could lead to: university or employment.

LEVEL 2

TECHNICAL CERTIFICATE – 1 YEAR

Could lead to:
Employment, Level 3 course
or apprenticeship.

LEVEL 1

CERTIFICATE – 1 YEAR

Could lead to:
Employment, Level 2
course or apprenticeship.

FOUNDATION LEARNING

For students who need
to develop confidence
and social skills

Could lead to: Level 1
course, employment,
work-based training.

ENGLISH AND MATHS

You will need English and Maths for most jobs and if you want to go on to university. So if you are 16–18 and haven't achieved a GCSE Level 4/grade C in English or Maths we will provide additional study time for you to re-sit the course alongside your main programme of study. For more information, please see pages 80–83.

GET UCAS TARIFF POINTS FROM LEVEL 3 COURSES TO TAKE YOU TO UNIVERSITY

Did you know Level 3 Advanced Technical qualifications, BTECs and T Levels give you valuable UCAS points just like A Levels so they are a solid route to university.

City & Guilds L3 Advanced Technical Ext Diploma	UCAS Points [†]	A Level
Distinction*	112–168	A* A*/A* A* A*
Distinction	96–144	A A/A A A
Merit	64–96	C C/C C C
Pass	32–48	E E/E E E
T Level overall grade	UCAS Points	A Level
Distinction* – (A* on the core and distinction in the occupational specialism)	168	A* A* A*
Distinction	144	AAA
Merit	120	BBB
Pass – C or above on core section	96	CCC
Pass – D or E on core section	72	DDD

[†] The number of UCAS points you can gain depends on which Diploma pathway you take.



**TALK TO OUR
CAREERS TEAM TO
FIND OUT MORE**

Advancing Futures

Stay here, go far and progress from your Level 3 or Access Course on to a degree.

We have a thriving degree programme at Sparsholt so it is natural for our Level 3 students to continue their higher-level studies at our University Centre.

The Centre offers Foundation, Bachelor and Master's degrees as well as Higher/Degree Apprenticeships so you can go much further than you think at Sparsholt. Our degrees are validated by the prestigious University of Portsmouth (UoP) and our BScs offer an optional additional one year industry placement (sandwich year).

During your time studying further education at Sparsholt you will also benefit from the higher-level facilities and equipment used for degree level study and will attend lectures and presentations from our expert University Centre lecturers. Find out more at sparsholt.ac.uk/university-centre



The equine centre has great facilities and a wide range of horses. The lecturers were all very friendly and knowledgeable with experience working in the equine sector.

Don't worry if you aren't sure on the exact career path you want to go down as the courses on offer at Sparsholt can lead to a wide variety of careers in the equine industry or even elsewhere. The degree will give you a chance to discover what modules interest you and which areas you excel at.



DEGREES AT SPARSHOLT

AGRICULTURE

- FdSc and BSc (Hons) Agriculture

ANIMAL SCIENCE AND ZOO BIOLOGY

- FdSc Animal Management and Applied Science
- FdSc Applied Zoo Science
- BSc (Hons) Applied Animal Science
- BSc (Hons) Applied Animal Behaviour
- BSc (Hons) Zoo Biology
- MSc Applied Zoo Biology

EQUESTRIAN SCIENCE AND PERFORMANCE MANAGEMENT

- FdSc and BSc (Hons) Equestrian Performance Management
- BSc (Hons) Equine Science
- MSc Equine Behaviour, Performance and Training

FISHERIES, AQUACULTURE AND MARINE STUDIES

- FdSc Sports Fisheries and Aquaculture
- FdSc Marine Ecology and Conservation
- BSc (Hons) Aquaculture and Fishery Management

VETERINARY NURSING SCIENCE

- FdSc Veterinary Nursing Science

WILDLIFE ECOLOGY AND CONSERVATION

- FdSc and BSc Wildlife Ecology and Conservation

HIGHER/DEGREE APPRENTICESHIPS

- Higher Apprenticeship Countryside Ranger Level 4
- Degree Apprenticeship Ecologist Level 7



SEE SPARSHOLT.AC.UK

for full list of specialist degree courses and further information about University Centre Sparsholt.

FIRE IT UP

Apprenticeships

Apprenticeships are a great way to earn money and gain a nationally recognised qualification through a mix of training in college and in the workplace. Sparsholt and Andover College work with over 1,100 employers across more than 40 different industries.

SPARSHOLT **ANDOVER**
CAMPUS CAMPUS

ANDOVER CAMPUS

Standard Level 2

- Accounts/Finance Assistant
- Adult Care Worker
- Autocare Technician
- Carpentry and Joinery
- Early Years Practitioner
- Hair Professional

Standard Level 3

- Assistant Accountant
- Business Administrator
- Content Creator
- Engineering Fitter
- Early Years Educator
- Advanced and Creative Hair Professional
- Lead Adult Care Worker
- Installation Electrician/Maintenance Electrician
- Teaching Assistant
- Metal Fabricator
- Motor Vehicle Service and Maintenance Technician (Light Vehicle)
- **COMING SOON** – Team Leader or Supervisor

Higher Apprenticeships

- Professional Accounting/Taxation Technician Level 4





SPARSHOLT CAMPUS

Standard Level 2

- Animal Care and Welfare Assistant
- Arborist
- Butcher
- Countryside Worker
- General Farm Worker
- Equine Groom
- Horticulture Operative
- Landscape Operative
- Greenkeeper
- Underkeeper

Standard Level 3

- Advanced Sports Turf Technician
- Keeper and Aquarist
- Crop Technician
- Content Creator
- Senior Equine Groom
- Information Communications Technician
- Veterinary Nurse
- **COMING SOON** – Landscape or Horticulture Supervisor


- Engineering Fitter
- Metal Fabricator
- **COMING SOON** – Livestock Unit Technician
- **COMING SOON** – Forest Craftsperson
- **COMING SOON** – Team Leader or Supervisor

Higher Apprenticeships

- Countryside Ranger Level 4
- **COMING SOON** – Ecologist Level 7

For current apprenticeship vacancies and to learn more, visit **apprenticeships.gov.uk** or contact the Apprenticeships Team at:

 **apprenticeships@sparsholt.ac.uk**

 **0845 850 0916**

ACCESS TO HIGHER EDUCATION

(LAND-BASED STUDIES)



LEVEL 3

ONE YEAR

This one-year course prepares adult learners who want to study at degree level but do not currently have the qualifications to apply. This course is specifically designed to give you the foundation skills and knowledge, with a strong science focus, for studying a land-based degree.

WHAT WILL I LEARN?

The course includes elements of chemistry, plant and animal biology and bio-science, along with the specialist study skills needed to study at higher education level, and to undertake a small scale research project. You will study a range of core subjects and follow some specialist modules in either animal studies, equine studies, ecology and conservation or fishery studies.

Teaching is delivered through a supportive mix of taught sessions, seminars, tutorials and practical lessons, which will help you build your knowledge and understanding of your chosen specialism, while gaining the ability to research and present your ideas as reports and presentations.

WHERE CAN I GO FROM HERE?

This course gives you UCAS tariff points for entry to University. Complete a full Level 3 qualification with us and we'll guarantee you an offer of a place on one of our relevant University Centre Sparsholt degree courses, subject to Admissions Terms & Conditions – for full details, go to sparsholt.ac.uk/university-centre

By the end of the course you will be fully prepared to progress on to a range of FdSc or BSc (Hons) degree programmes and take the next step towards your career goals.

If you are over 19 you can apply for an Advanced Learner Loan to cover tuition fees. If you go on to complete a full degree after your Access course then the Access loan will be written off.

HOW WILL I BE ASSESSED?

This intensive programme is assessed throughout the course, without final exams. Assessment will include essays, presentations, class assessments and reports – all of which will prepare you for higher education.

ENTRY REQUIREMENTS

Applications will be assessed on individual merit and whilst no formal qualifications are required, evidence of previous study is essential.

You will need to have either English or Maths at GCSE (or Level 2 equivalent) and will be offered the opportunity to study the other if required.

Most students will progress to a relevant degree at Sparsholt and you will be supported by your tutors.

Most students are aged 19 or above at the start of the course, however entry at 18 may be possible – please contact the College for more details.

WHY CHOOSE THIS COURSE?

- Provides a fast-track route to higher education – 95% of students progressed to degree study in 2020
- Continuous assessment with no end of year exams
- Gain important GCSE English or Maths alongside this course
- Includes three weeks' work placement



SEE SPARSHOLT.AC.UK

for full list of topics covered, any optional additional qualifications and much more.

AGRICULTURE



SEE SPARSHOLT.AC.UK

for full information on courses, facilities and much more.



Join us and learn all about modern farming techniques for the next generation, alongside hands-on experience on our onsite commercial farm with arable/livestock enterprises and engineering workshops. Getting involved in industry events and visits to Agricultural suppliers, machinery dealerships and shows enhances learning and practical skills in all aspects of the industry.

AGRICULTURE LEVEL 1

AGRICULTURE LEVEL 2

AGRICULTURE WITH OPTIONS LEVEL 3

AGRICULTURAL ENGINEERING LEVEL 2

AGRICULTURAL ENGINEERING FABRICATION AND WELDING NVQ LEVEL 2

AGRICULTURAL ENGINEERING LEVEL 3

AGRICULTURE, LAND MANAGEMENT AND PRODUCTION T LEVEL: LIVESTOCK PRODUCTION, CROP PRODUCTION* AND LAND-BASED ENGINEERING* PATHWAYS

*New for 2024



CAREERS

- Farm Manager
- Agricultural Retail and Merchandise
- Skilled Machinery Operator
- Stock Person
- Instructor/Lecturer
- Agronomist
- Agricultural Contractor
- Livestock Nutritionist
- AI Technician



UNIVERSITY CENTRE
SPARSHOLT

Degree courses also available, find out more here.



Apprenticeships

Apprenticeships available

SHORT COURSES ALSO AVAILABLE

MEET THE EXPERT

ROSIE WATTS
CURRICULUM LEADER



Working in agriculture can be a fulfilling career for many people, with a wide range of different jobs on offer. Modern agriculture is a diverse sector, offering opportunities which provide such an important contribution to everyday life. I take pride in allowing all our learners an opportunity to grow, be challenged and set goals to help them to secure a future in farming, food and sustainability.

UNIVERSITY DESTINATIONS

- University Centre Sparsholt
- Hartpury University
- Harper Adams University
- Royal Agricultural University
- University of Reading

INDUSTRY LINKS

- Royal Agricultural Society of England (RASE)
- Linking Environment and Farming (LEAF)
- National Institute of Agricultural Botany (NIAB)
- Tenant Farmers Association (TFA)
- National Farmers' Union (NFU)
- Royal Agricultural Benevolent Institution (RABI)
- Agriculture and Horticulture Development Board (AHDB)
- RSPCA Assured farms
- Red Tractor – Assured Food Standards

FACILITIES

- NEW Robotic Dairy, Beef Barn and Wet Labs – coming 2023
- 180-hectare College farm including Dairy, Beef, Sheep and Pig enterprises
- Arable/crop enterprises
- Fleet of plot and field tractors
- Drones used for new technology in farming
- Tractor/Telehandler/ATV Driving Plot

AGRICULTURE LEVEL 1 DIPLOMA

ONE YEAR

This is an introduction into mixed farming. Working on the College farm's sheep, beef, dairy and pig units, you'll learn valuable skills in a variety of farm tasks to help make you ready for employment.

WHAT WILL I LEARN

You'll be involved in tractor driving and working with modern machinery, livestock handling and daily work with cattle, sheep and pigs, as well as general farm maintenance. We'll also work with you to improve your Maths and English skills if necessary to increase your future course and career options.

WHAT CAN I STUDY NEXT?

- Level 2 Agriculture
- Apprenticeship in Agriculture

ENTRY REQUIREMENTS

You may be accepted directly after leaving school and previous experience is not essential. You'll be expected to achieve GCSEs at grade 3–1 or above.



CAREERS

- Working with livestock on a farm
- Working on an arable farm
- Tractor driving



SEE [SPARSHOLT.AC.UK](https://sparsholt.ac.uk)

for full list of topics covered, any optional additional qualifications and much more.

AGRICULTURE

LEVEL 2 TECHNICAL CERTIFICATE

ONE YEAR

This course will give you an insight into the modern agricultural industry through work placements, visits to local farms and estates and trips to events.

WHAT WILL I LEARN

Working on the College farm's beef, dairy, sheep enterprise, arable and pig unit you'll also learn valuable skills and get the hands-on experience needed for employment. If necessary, we'll also work with you to improve your Maths and English.

Find out more about how you can develop your skills and knowledge by engaging with employers – see page 26 for more details.



ENTRY REQUIREMENTS

Four GCSEs at grade 3 or above, English and Maths at grade 3 or a Level 1 qualification in a relevant subject with either units at a Merit or recommendation for the course.

WHAT CAN I STUDY NEXT?

- Level 3 courses
- Level 2/Level 3 Agricultural Engineering
- Level 2/Level 3 Apprenticeship



VIDEO REEL

Sparsholt student Jack talking about his experience.



CAREERS

- Tractor driver
- Stock-person working with cattle, sheep or pigs
- Contract farming



SEE SPARSHOLT.AC.UK

for full list of topics covered, any optional additional qualifications and much more.



MY FUTURE IN FOCUS



Sparsholt has given me the ability to further develop my agricultural knowledge and created a strong pathway for me to embed and develop my practical skills within all areas of the industry; particularly around livestock.

JAMIE

AGRICULTURE STUDENT
KENNET SCHOOL

AGRICULTURE WITH OPTIONS LEVEL 3

TWO YEARS – YEAR 1 ATD (ADVANCED TECHNICAL DIPLOMA)

YEAR 2 ATED (ADVANCED TECHNICAL EXTENDED DIPLOMA)

This course includes three weeks work experience in the first year – giving you real industry experience and the opportunity to put your skills learnt on the College farm, beef, dairy, arable, sheep and pig units into practice. Visits to businesses and events will provide an in-depth view of national and international agriculture and you'll also get involved in busy College events which is great fun and the ideal opportunity to develop vital communication and customer facing skills.

WHAT WILL I LEARN

In the first year you'll develop practical knowledge and techniques so that in the second year you'll be ready to concentrate on enterprise management and specialise with optional livestock and arable units, from livestock health and nutrition to farm habitats.

ENTRY REQUIREMENTS

Five GCSEs including Science, with Maths and English at grade 4 or Level 2 in Agriculture at Merit level with English and Maths at Level 2 or GCSE grade 4.

WHAT CAN I STUDY NEXT?

- FdSc or BSc in Agriculture or other Land-based subject
- This course gives you UCAS tariff points towards entry to University.
- Complete a full Level 3 with us and we'll guarantee you an offer of a place on one of our relevant University Centre Sparsholt degree courses. Admissions Terms & Conditions apply – for full details go to sparsholt.ac.uk/university-centre

UNIVERSITY CENTRE
SPARSHOLT

Find out more about how you can develop your skills and knowledge by engaging with employers – see page 26 for more details.



SEE SPARSHOLT.AC.UK

for full list of topics covered, any optional additional qualifications and much more.



CAREERS

- Farm manager or assistant farm manager
- Industries such as agronomy, nutrition consultancy, contract farming, grain merchandise, machinery dealing, feed sales, supply trade
- Livestock or arable unit manager
- Head tractor driver
- Head stock-person working with cattle, sheep or pigs

AGRICULTURAL ENGINEERING LEVEL 2 TECHNICAL CERTIFICATE

ONE YEAR

This course will give you the essential technical knowledge and practical skills to confidently work with modern machinery.

WHAT WILL I LEARN

Work placements, visits to industry events such as the LAMMA Show and demonstration days plus trips to machinery manufacturers and dealers will give you a real insight into the industry, supported by our specialist staff and state-of-the-art facilities. We'll also work with you to improve your Maths and English skills if necessary.

Find out more about how you can develop your skills and knowledge by engaging with employers – see page 26 for more details.



ENTRY REQUIREMENTS

Four GCSEs at grade 3 or above including English and Maths at grade 3 or relevant Level 1 qualification plus Functional Skills English and Maths at Level 1.

WHAT CAN I STUDY NEXT?

- Level 3 courses
- Level 2/Level 3 Apprenticeship



CAREERS

- Assistant technician working with: Ground care machinery such as mowers or cultivators
- Fixed plant such as grain driers, vegetable handling and packing
- Large machinery such as tractors and combines, fabrication and construction



SEE SPARSHOLT.AC.UK

for full list of topics covered, any optional additional qualifications and much more.

AGRICULTURAL ENGINEERING FABRICATION AND WELDING NVQ LEVEL 2 DIPLOMA

ONE YEAR

This course will give you the essential knowledge and practical skills to begin your journey into the welding industry.

WHAT WILL I LEARN

You will develop competency in Joining, Welding, Cutting and Forming of materials alongside the development of theoretical knowledge required to understand the complexities of engineering. In addition you will gain an understanding of industry required health and safety practises working in a professional workshop environment that simulates real world learning and will over the duration of your course develop a portfolio of evidence that demonstrates your knowledge and understanding.

ENTRY REQUIREMENTS

Four GCSEs at grade 3 or above with Maths at Grade 4.

WHAT CAN I STUDY NEXT?

- Level 3 NVQ Diploma in Fabrication and Welding
- T Level Land Based Engineering pathway

Find out more about how you can develop your skills and knowledge by engaging with employers – see page 26 for more details.



SEE SPARSHOLT.AC.UK

for full list of topics covered, any optional additional qualifications and much more.

AGRICULTURAL ENGINEERING LEVEL 3 ADVANCED TECHNICAL EXTENDED DIPLOMA

TWO YEARS

Taught by specialist staff in our exciting Motor Vehicle and Agricultural Engineering Centre, this course is designed to equip you with the knowledge, understanding and skills the land-based technology industry needs.

WHAT WILL I LEARN

You'll enjoy work placements, trips to machinery manufacturers and dealers and industry events such as the LAMMA Show and Grassland event, as well as the opportunity to work on a wide range of land-based machinery – both at the College and at local dealers.

ENTRY REQUIREMENTS

Five GCSEs at grade 4 or above including English and Maths/Level 2 in Agriculture at Merit with English and Maths at GCSE grade 4.

Find out more about how you can develop your skills and knowledge by engaging with employers – see page 26 for more details.



WHAT CAN I STUDY NEXT?

- FdSc or BSc in Agriculture or other Land-based subject
- This course gives you UCAS tariff points towards entry to University.
- Complete a full Level 3 with us and we'll guarantee you an offer of a place on one of our relevant University Centre Sparsholt degree courses. Admissions Terms & Conditions apply – for full details go to **sparsholt.ac.uk/university-centre**

UNIVERSITY CENTRE
SPARSHOLT



CAREERS

- Farm mechanic
- Dealership technician
- Contractor operator mechanic
- Fabrication technician
- Parts person/manager in dealership
- Machinery sales



SEE SPARSHOLT.AC.UK

for full list of topics covered, any optional additional qualifications and much more.

AGRICULTURE, LAND MANAGEMENT AND PRODUCTION T LEVEL

TWO YEARS

The T Level Agriculture, Land Management and Production provides a unique opportunity to undertake a qualification that includes industry experience. Including core content such as Health and Safety, sustainability, diseases, disorders and health plans, nutrition, technology and equipment and data and information, your work placement throughout the two years will then enable you to put into practice your knowledge and understanding.

PATHWAYS AVAILABLE:

Livestock Production
Crop Production
Land-Based Engineering

LIVESTOCK PRODUCTION PATHWAY WHAT WILL I LEARN

Over the duration of the course, you'll cover topics such as:

- Dairy, Beef, Sheep and Pig production including breeding and nutrition
- Animal Health and Biology
- Aspects of Poultry and egg production
- Health and Safety including biosecurity in farming
- Business, Finance, and data
- Equality, ethics, and communications
- Machinery Operations and field work
- Tractor, Telehandlers and ATV Training
- Grassland management and sustainability in farming



SEE SPARSHOLT.AC.UK

for full list of topics covered, any optional additional qualifications and much more.

CROP PRODUCTION PATHWAY WHAT WILL I LEARN

You'll develop knowledge of and skills in:

- Conditions required for optimal crop yield and quality
- Tools, equipment and materials used in crop production
- Processes and methods used in managing crop production
- Establishing crops
- Managing crops
- Harvesting and storage of crops



SEE SPARSHOLT.AC.UK

for full list of topics covered, any optional additional qualifications and much more.

LAND-BASED ENGINEERING PATHWAY WHAT WILL I LEARN

You'll develop knowledge of and skills in:

- Operating principles of different types of land-based machinery and equipment
- Tools, equipment and materials and their application in land-based engineering
- Maintenance and repair of land-based machinery and equipment
- Diagnostic activities on land-based machinery and equipment
- Maintenance and preparation for out-of-season storage



SEE SPARSHOLT.AC.UK

for full list of topics covered, any optional additional qualifications and much more.

ENTRY REQUIREMENTS

Five GCSEs including Science, with Maths and English at grade 4 or Level 2 at Merit Level plus Maths and English at grade 4.

WHAT CAN I STUDY NEXT?

- FdSc or BSc in Agriculture or other Land based subject
- This course gives you UCAS tariff points towards entry to University.
- Complete a full Level 3 with us and we'll guarantee you an offer of a place on one of our relevant University Centre Sparsholt degree courses. Admissions Terms & Conditions apply – for full details go to sparsholt.ac.uk/university-centre

UNIVERSITY CENTRE
SPARSHOLT

Not sure which course is for you? Talk to us and we'll support you to select between the Advanced Technical Diploma route and the T Level route.



CAREERS

- Farm manager/Assistant farm manager
- Agricultural Retail
- Skilled Machinery Operator
- Stock Person
- Instructor/Lecturer
- Agronomist
- Agricultural Contractor
- Livestock Nutritionist
- AI Technician

ANIMAL STUDIES



SEE SPARSHOLT.AC.UK

for full information on courses, facilities and much more.

Sparsholt is the ideal starting point for a career in this highly competitive industry, with an international reputation for animal studies.

Our specialist Animal Health and Welfare Research Centre houses 623 animals from 131 species including species of conservation importance, domestic, exotic and large farm animals – enabling you to gain theoretical and practical experience relevant for most careers in animal care.

ANIMAL CARE LEVEL 1 (WORK-BASED)

ANIMAL CARE LEVEL 1 (THEORY-BASED)

ANIMAL CARE LEVEL 2 TECHNICAL CERTIFICATE

ANIMAL MANAGEMENT LEVEL 3 WITH A PATHWAY IN ZOOS & WILDLIFE

ANIMAL MANAGEMENT LEVEL 3 WITH PATHWAYS IN SCIENCE, ZOOS, ANIMAL MANAGEMENT

ANIMAL CARE AND MANAGEMENT T LEVEL

ANIMAL CARE AND SCIENCE T LEVEL



CAREERS

- Zoo Keeper/Zoo Educator
- Animal Trainer
- Animal Behaviourist
- Dog Grooming
- Animal Retail
- Veterinary Nurse
- Animal Rehabilitator
- Animal Conservationist
- Cattery/Kennel Technician
- Animal Physiotherapist
- Animal Nutritionist



UNIVERSITY CENTRE

SPARSHOLT

Degree courses also available, find out more here.



Apprenticeships

Apprenticeships available

MEET THE EXPERT

REBECCA PICKSTOCK
CURRICULUM LEADER



Before teaching Animal Management I worked in industry as a senior primate keeper and rhino and exotic hoofstock keeper. I have worked in zoos and animal sanctuaries in Australia and Belize. My main interests are wildlife, ecology, zoo health and animal behaviour.

UNIVERSITY DESTINATIONS

- University Centre Sparsholt
- Harper Adams University
- University of Manchester
- Liverpool John Moores University
- University of Nottingham
- Oxford Brookes University
- University of Southampton
- Royal Veterinary College London

INDUSTRY LINKS

- The British and Irish Association of Zoos and Aquariums (BIAZA)
- The National Zoo Academy
- The Living Rainforest
- The World Pheasant Association
- The Royal College of Veterinary Surgeons (RCVS)

FACILITIES

- Wide variety of herptile, bird and mammal species, many part of conservation breeding programmes
- New Animal Health and Welfare Research Centre
- £2.5 million investment in new facilities including Hydrotherapy Pool which will benefit the learning of Sparsholt students for years to come
- Research rooms
- Paddock section including dwarf zebus, rheas, alpacas and goats
- Exotic mammal species – porcupine, red pandas, meerkats, genet, tenrecs and lemurs
- Nutritional and animal behaviour areas
- 360-degree cameras to study captive welfare of our animals

ANIMAL CARE LEVEL 1 WORK-BASED

ONE YEAR

If you perform better practically than academically then this could be the course for you.

WHAT WILL I LEARN

You will learn how to care for and look after a range of animals, from housing and feeding requirements, to handling, behaviour, health and exercise. You will learn the theory behind the what, when, why and how and then carry this out in practical sessions.

The majority of your learning will take place at the Animal Health and Welfare Research Centre and you will complete tasks and build a portfolio of evidence with photograph and candidate reports. This is complemented with some time in theory lessons where you consolidate your learning and build up your understanding of theory shown through various tasks that also help to build your portfolio.

ENTRY REQUIREMENTS

It is expected that learners will have functional skills qualifications or Entry 3.

WHAT CAN I STUDY NEXT?

- An Apprenticeship or internship
- Level 1 Theory-based Animal Care



CAREERS

- Kennel or cattery worker
- Dog walker
- Pet shop assistant
- Animal care assistant



SEE SPARSHOLT.AC.UK

for full list of topics covered, any optional additional qualifications and much more.

ANIMAL CARE LEVEL 1 THEORY-BASED

ONE YEAR

This course encompasses both practical assignments and theory-based assignments – with a higher proportion of theory content and theory assignments.

WHAT WILL I LEARN

You will learn how to care for and look after a range of animals, from housing and feeding requirements, to handling, behaviour, health and exercise. You will learn the theory behind the what, when, why and how and then carry this out in practical sessions.

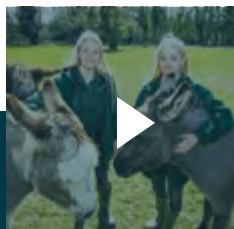
Assignments are all completed under supervised conditions and must be done without the use of the internet or external support. There are also two online multiple choice exams that must be passed. We hope to be able to offer the opportunity for a residential to either the New Forest or the Isle of Wight as well as day trips to see different zoological collections.

ENTRY REQUIREMENTS

Two or more GCSEs at grade 3–1 or above.

WHAT CAN I STUDY NEXT?

- Level 2 in Animal Care



VIDEO REEL

Sparsholt Animal Studies students Erin and Cody talking about their experience.



CAREERS

- Kennel or cattery worker
- Dog walker
- Pet shop assistant
- Animal care assistant



SEE SPARSHOLT.AC.UK

for full list of topics covered, any optional additional qualifications and much more.



MY FUTURE IN FOCUS



The lecturers have widened my knowledge of different aspects of animal care due to their previous work backgrounds and have pushed me to achieve my full potential.

Within practical and theory lessons and work experience I have learnt important husbandry skills which I will need when looking after animals in a zoo, and I have also enjoyed meeting others with a similar interest and becoming close friends.

XANTHE

ANIMAL MANAGEMENT STUDENT

ANIMAL CARE

LEVEL 2 TECHNICAL CERTIFICATE

ONE YEAR

The course will focus on developing your skills and knowledge of animal husbandry through a mix of engaging classroom sessions, practical animal handling and work experience.

WHAT WILL I LEARN

You will learn how to care for and look after a range of animals, from housing and feeding requirements, to handling, behaviour, health and exercise. You will learn the theory behind the what, when, why and how and then carry this out in practical sessions.

The course consists of 1 practical day per week and 2–3 days of theory lessons. The units are assessed in different ways such as written assessments, synoptic assessments and synoptic exams. During your practical sessions you will have the opportunity to develop your practical skills which form part of your overall assessment, therefore attendance and correct PPE are important.

You will gain hands-on experience with the farm livestock, exotic animals, domestic pets and birds of the College's Animal Health and Welfare Research Centre. We hope to be able to offer UK based study, various trips and visits to zoo collections and an opportunity to attend guest speaker sessions, making valuable industry contacts.

Find out more about how you can develop your skills and knowledge by engaging with employers – see page 26 for more details.



ENTRY REQUIREMENTS

Four GCSEs at grade 3 or above, including English and Maths at grade 3 or a Level 1 in Animal Care with theory assignments showing work at a Merit level, Functional Skills Level 1 in English or recommendation for the course.

WHAT CAN I STUDY NEXT?

- Level 3 in Animal Management
- Apprenticeship – Animal Care and Welfare
- Assistant Standard Level 2/Keeper and Aquarist Standard Level 3



CAREERS

- Kennel or cattery worker
- Dog walker
- Pet shop assistant
- Animal care assistant



SEE SPARSHOLT.AC.UK

for full list of topics covered, any optional additional qualifications and much more.

ANIMAL MANAGEMENT LEVEL 3 WITH A PATHWAY IN ZOOS & WILDLIFE

**TWO YEARS – YEAR 1 ADVANCED TECHNICAL CERTIFICATE IN ANIMAL MANAGEMENT (360)
YEAR 2 ADVANCED TECHNICAL EXTENDED DIPLOMA IN ANIMAL MANAGEMENT (720)**

This two A Level equivalent course will give you the skills, knowledge and practical understanding to progress into employment or for further study at university. This course will also allow you to resit either your Maths or English GCSE to gain a grade 4 or higher.

WHAT WILL I LEARN

In the first year you'll gain a solid foundation in animal science and husbandry and then in the second year you will follow the pathway in Zoos & Wildlife with its associated units.

We hope to be able to offer you the opportunity to attend residential study tours both in the UK and South Africa, giving you the chance to work with wild animals as well as making valuable industry contacts.

ENTRY REQUIREMENTS

Four GCSEs including Science, with Maths or English at Grade 4 or above or Level 2 in Animal Care with Biology and synoptic units at Merit level and Maths or English at grade 4 or above.

WHAT CAN I STUDY NEXT?

- FdSc in Animal Management
- Apprenticeship in Veterinary Nursing
- This course gives you UCAS tariff points towards entry to University.
- Complete a full Level 3 with us and we'll guarantee you an offer of a place on one of our relevant University Centre Sparsholt degree courses. Admissions Terms & Conditions apply – for full details go to **sparsholt.ac.uk/university-centre**

UNIVERSITY CENTRE
SPARSHOLT

Find out more about how you can develop your skills and knowledge by engaging with employers – see page 26 for more details.



CAREERS

- Veterinary Care Assistant
- Pet retail
- Kennels and catteries
- Grooming and hydrotherapy
- Animal rescue centres
- Animal training and behaviour
- Keeper or Education Officer
- Dog Walker/Pet Sitter



SEE SPARSHOLT.AC.UK

for full list of topics covered, any optional additional qualifications and much more.

ANIMAL MANAGEMENT LEVEL 3 WITH PATHWAYS IN SCIENCE, ZOOS, ANIMAL MANAGEMENT

TWO YEARS – YEAR 1 ADVANCED TECHNICAL DIPLOMA IN ANIMAL MANAGEMENT (540)
YEAR 2 ADVANCED TECHNICAL EXTENDED DIPLOMA IN ANIMAL MANAGEMENT (1080)

This three A Level equivalent course will give you the skills, knowledge and practical understanding to progress into employment or higher level study at university. Next steps may include dedicated animal husbandry roles, volunteer conservation placements abroad and a full range of higher education courses including Veterinary Science degrees.

WHAT WILL I LEARN

In the first year you'll gain a solid foundation in animal science and husbandry before selecting a pathway for your second year. There are three pathway options in Year 2; Zoo, Animal Management & Science. Some higher education courses will require the Science pathway.

We hope to be able to offer the opportunity to attend residential study tours both in the UK and South Africa, giving you the chance to work with wild animals as well as making valuable industry contacts.

Not sure which course is for you? Talk to us and we'll support you to select between the Advanced Technical Diploma route and the T Level route.

Find out more about how you can develop your skills and knowledge by engaging with employers – see page 26 for more details.



ENTRY REQUIREMENTS

Five GCSEs at Grade 4 or above to include Maths, English and Science or Level 2 qualification in Animal Care with Biology and Health units at distinction level and Maths and English GCSEs at grade 4 or above.

WHAT CAN I STUDY NEXT?

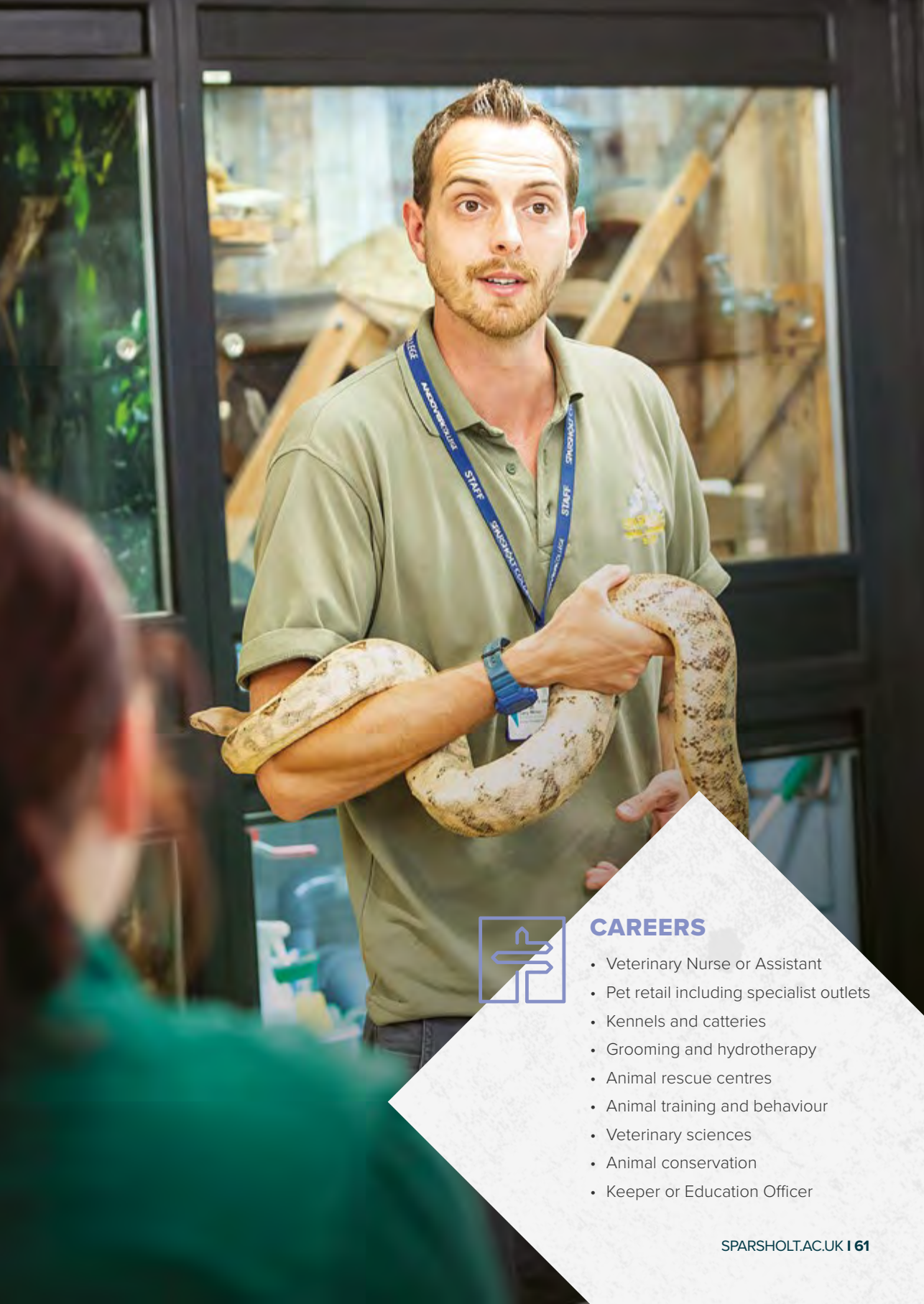
- Examples of HE courses include:
- Animal Science, Behaviour and Conservation, Zoology
- Apprenticeship in Veterinary Nursing
- Veterinary and Bio-Veterinary Sciences
- Veterinary Nursing BSc
- This course gives you UCAS tariff points towards entry to University.
- Complete a full Level 3 with us and we'll guarantee you an offer of a place on one of our relevant University Centre Sparsholt degree courses. Admissions Terms & Conditions apply – for full details go to sparsholt.ac.uk/university-centre

UNIVERSITY CENTRE
SPARSHOLT



SEE SPARSHOLT.AC.UK

for full list of topics covered, any optional additional qualifications and much more.



CAREERS

- Veterinary Nurse or Assistant
- Pet retail including specialist outlets
- Kennels and catteries
- Grooming and hydrotherapy
- Animal rescue centres
- Animal training and behaviour
- Veterinary sciences
- Animal conservation
- Keeper or Education Officer



ANIMAL CARE AND MANAGEMENT T LEVEL

TWO YEARS

The T Level in Animal Care provides a unique opportunity to undertake a qualification that is supplemented by experiences within the industry. Including core content such as sustainability, business, communication, Health and Safety and finance that underpins knowledge and understanding of the wider sector, your work placement throughout the two years will then enable you to put into practice your knowledge and understanding.

ANIMAL CARE AND MANAGEMENT PATHWAY WHAT WILL I LEARN

The Animal Management pathway focuses on the skills and knowledge needed for the practical husbandry, nutrition and welfare of animals in a range of settings, including domestic pets, zoo animals, farm animals, wildlife centres and other collections.



SEE SPARSHOLT.AC.UK

for full list of topics covered, any optional additional qualifications and much more.

ANIMAL CARE AND SCIENCE PATHWAY WHAT WILL I LEARN

The Animal Science pathway leads students into careers which are underpinned by research skills and scientific knowledge such as animal nutrition, diseases and welfare, genetic research and teaches biological principles to prepare for work or University level courses.



SEE SPARSHOLT.AC.UK

for full list of topics covered, any optional additional qualifications and much more.

ENTRY REQUIREMENTS

Five GCSEs at Grade 4 or above to include Maths, English and Science or Level 2 qualification in Animal Care with Biology and Health units at distinction level and Maths and English GCSEs at grade 4 or above.

WHAT CAN I STUDY NEXT?

- Examples of HE courses include:
- Animal Science, Behaviour and Conservation at FdSc or BSc level
- Zoology at BSc level
- Apprenticeship in Veterinary Nursing
- Veterinary and Bio-Veterinary Sciences
- Veterinary Nursing BSc
- This course gives you UCAS tariff points towards entry to University.
- Complete a full Level 3 with us and we'll guarantee you an offer of a place on one of our relevant University Centre Sparsholt degree courses. Admissions Terms & Conditions apply – for full details go to sparsholt.ac.uk/university-centre

UNIVERSITY CENTRE
SPARSHOLT



CAREERS

- Veterinary Nurse or Assistant
- Pet retail including specialist outlets
- Kennels and catteries
- Grooming and hydrotherapy
- Animal rescue centres
- Animal training and behaviour
- Veterinary sciences
- Animal conservation
- Keeper or Education Officer

ARBORICULTURE, FORESTRY AND WOODLAND MANAGEMENT



Using a combination of on and off-site facilities, we provide training for the people who will manage and work in our forestry industries for timber production as well as those who look after and manage individual trees in parks, streets and private gardens.

Learning from experts in the field, our students will acquire all the practical and scientific skills to work in the industry or to study at an advanced level.

**LAND-BASED OPERATIONS LEVEL 1
RURAL SKILLS (WOODLAND)**

ARBORICULTURE AND FORESTRY LEVEL 2

TREES AND WOODLAND MANAGEMENT T LEVEL



CAREERS

- Arborist
- Forester
- Tree Surveyor
- Woodland Conservation



Apprenticeships

Apprenticeships available



SEE SPARSHOLT.AC.UK

for full information on courses, facilities and much more.

MEET THE EXPERT

SIMON TURNER
LECTURER



I have a wide variety of industry relevant experience in a range of positions, starting as a climbing arborist prior to spending 18 years as a planning based arboricultural officer. I have a passion to inspire learners to reach their full potential here at college and in the diverse and varied industry of forestry and arboriculture.

UNIVERSITY DESTINATIONS

- University Centre Sparsholt
- Harper Adams University
- Royal Agricultural University
- University of Reading

INDUSTRY LINKS

- Royal Forestry Society
- LANTRA
- Institute of Chartered Foresters
- Confor – Confederation of Forest Industries
- International Society of Arboriculture
- Arboricultural Association

FACILITIES

- Sawmill and timber processing area
- Maintenance workshops
- Safe tree climbing practice areas
- Digital clinometer to measure tree heights, the latest chainsaws tuned to minimise emissions



LAND-BASED OPERATIONS LEVEL 1 RURAL SKILLS (WOODLAND)

ONE YEAR

During this course you'll develop basic practical skills and receive an introduction and insight into the woodland and tree care industries, as well as basic estate management skills – all with conservation in mind.

WHAT WILL I LEARN

The course is very practical and involves work in local Forestry Commission and private estate woodlands. You'll also work in the College sawmill and timber processing area, learning how to operate different types of machinery to produce timber and timber products for use around the College grounds and estate.

ENTRY REQUIREMENTS

You will be expected to have a minimum of two GCSEs at grade 3–1, and be recommended by your school.

WHAT CAN I STUDY NEXT?

- Level 2 or 3 qualifications in Arboriculture or Forestry



CAREERS

This introductory course leads on to further education and will set a basis for future employment in a range of land-based industries; tree work in particular.



SEE SPARSHOLT.AC.UK

for full list of topics covered, any optional additional qualifications and much more.

ARBORICULTURE AND FORESTRY LEVEL 2 TECHNICAL CERTIFICATE

ONE YEAR

If you are interested in working in the trees and timber sector, then this course could be for you. Taught by industry and academic experts, you'll develop the practical skills and underpinning knowledge needed to go into the arboriculture industry or higher level courses.

WHAT WILL I LEARN

You will gain an understanding of the skills and knowledge that are important when you are working in a tree work setting, via an extremely well equipped on-site arboriculture and forestry department, as well as a variety of local off site facilities – from a private arboretum to Forestry Commission woodland and the New Forest.

Find out more about how you can develop your skills and knowledge by engaging with employers – see page 26 for more details.



VIDEO REEL

Sparsholt student Brad talking about his experience.



SEE SPARSHOLT.AC.UK

for full list of topics covered, any optional additional qualifications and much more.

ENTRY REQUIREMENTS

Four GCSEs at grade 3 or above including Maths and English at Grade 3 or relevant Level 1 qualification at Merit. You will be required to work towards Maths or English GCSE if you do not have a grade 4 or above. You must be aged 17 or over at the start of the course due to age restrictions on chainsaw use. There are no exceptions to this rule. Mature students may be considered with alternative qualifications or experience.

WHAT CAN I STUDY NEXT?

- T Level in Trees and Woodland Management
- Level 3 in Arboriculture or Forestry



CAREERS

- Climber or grounds person
- Self-employment
- Utilities work
- Forester
- Conservation work

A portrait of a young man with curly brown hair and a light beard, smiling. He is wearing a dark blue jacket with brown trim. The background is a blurred green field. There are green and white geometric shapes in the top right and bottom left corners.

MY FUTURE IN FOCUS



My highlight has been the offsite practical days where we work in very similar conditions to industry, which helps boost working and further life out of college.

Sparsholt has shown me different avenues within the industry as well as teaching the relevant material so that I can show my knowledge to others, whether it be an employer or a customer.

BRAD

ARBORICULTURE & FORESTRY STUDENT
TESTWOOD SCHOOL

TREES AND WOODLAND MANAGEMENT

T LEVEL

TWO YEARS

The T Level in Trees and Woodland Management provides a unique opportunity to undertake a qualification that is supplemented by experiences within the industry. Including core content such as sustainability, business, communication, Health and Safety and finance that underpins knowledge and understanding of the wider Arboriculture and Forestry sector, your work placement throughout the two years will then enable you to put into practice your knowledge and understanding.

WHAT WILL I LEARN?

You'll learn theories and methods used to grow, maintain, and manage trees and woodlands, as well as all about the tools, equipment and materials used in tree and woodland management and maintenance. You'll be able to select your preferred pathway from either Arboriculture or Forestry.

ENTRY REQUIREMENTS

Five GCSEs at grade 9–4, including Science, English and Maths. Mature students may be considered with alternative qualifications or experience. You must be aged 17 or over at the start of the course due to age restrictions on chainsaw use. There are no exceptions to this rule.

Find out more about how you can develop your skills and knowledge by engaging with employers – see page 26 for more details.



WHAT CAN I STUDY NEXT?

- FdSc in Woodland/Forestry Management
- BSc in Woodland/Forestry Management
- This course gives you UCAS tariff points towards entry to University.
- Complete a full Level 3 with us and we'll guarantee you an offer of a place on one of our relevant University Centre Sparsholt degree courses. Admissions Terms & Conditions apply – for full details go to sparsholt.ac.uk/university-centre

UNIVERSITY CENTRE
SPARSHOLT



CAREERS

- Climbing arborist
- Tree Surveyor
- Conservation work
- Local authority (assistant tree officer)
- Arboretum/woodland/estate work
- Forester
- Employment with the Forestry Commission or Woodland Trust



SEE SPARSHOLT.AC.UK

for full list of topics covered, any optional additional qualifications and much more.



CONSERVATION, COUNTRYSIDE AND THE ENVIRONMENT

(LAND AND WILDLIFE)



SEE SPARSHOLT.AC.UK

for full information on courses, facilities and much more.



Conservation is at the heart of everything we do and our courses provide routes into the conservation and countryside management industries, both nationally and internationally, for school leavers and adults seeking a career change.

Our strong industry links, expert staff and outstanding natural facilities make Sparsholt College a natural choice for the study of countryside and conservation management.

**LAND-BASED OPERATIONS LEVEL 1
RURAL SKILLS (WOODLAND)**

LAND AND WILDLIFE (CONSERVATION) LEVEL 2

**LAND AND WILDLIFE (COUNTRYSIDE AND
CONSERVATION) LEVEL 3**



CAREERS

- Countryside Ranger
- Reserve Warden
- Education Officer
- Ecological Surveyor



UNIVERSITY CENTRE

SPARSHOLT

Degree courses also available, find out more here.



Apprenticeships

Apprenticeships available

MEET THE EXPERT

DAVE LOCK
CURRICULUM LEADER



After my time as a Sparsholt student, I worked on both national and international conservation projects. A keen naturalist fascinated by the living world, I have a particular interest in ecology, practical habitat management and environmental science.

UNIVERSITY DESTINATIONS

- University Centre Sparsholt
- University of Aberystwyth
- University of Bournemouth
- University of Reading
- University of Bangor
- University of Plymouth
- Royal Holloway, University of London
- University of Stirling

INDUSTRY LINKS

- Forestry Commission
- The Wildlife Trusts
- Natural England
- RSPB
- Environment Agency
- Butterfly Conservation
- Hampshire County Council Countryside Services
- The Vincent Wildlife Trust

FACILITIES

- College Farm Estate
- Lake, associated wetland habitats and species-rich grasslands
- Semi-natural ancient woodland
- Greenwood crafts area
- Chainsaw training areas
- Game and Wildlife Centre
- Laboratories and specialist surveying equipment

LAND-BASED OPERATIONS LEVEL 1 RURAL SKILLS (WOODLAND)

ONE YEAR

During this course you'll develop basic practical skills and receive an introduction and insight into the woodland and tree care industries, as well as basic estate and habitat management skills – all with conservation in mind.

WHAT WILL I LEARN

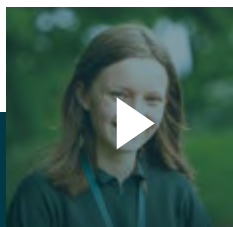
The course is very practical and involves work in local Forestry Commission and private estate woodlands. You'll also work in the College sawmill and timber processing area, learning how to operate different types of machinery to produce timber and timber products for use around the College grounds and estate.

ENTRY REQUIREMENTS

Two or more GCSEs at grade 3–1 or above`

WHAT CAN I STUDY NEXT?

- Level 2 Technical Certificate in Land and Wildlife (Game) or (Fish) or (Countryside)



VIDEO REEL

Sparsholt Conservation student
Sophie talking about her experience.



CAREERS

Progression to
Level 2 courses with
career pathways:

- Assistant Warden/
Countryside Ranger
- Countryside
Recreation assistant
- Practical Habitat/
Estate worker
- Conservation
- Volunteering/Internships



SEE SPARSHOLT.AC.UK

for full list of topics covered, any optional
additional qualifications and much more.

LAND AND WILDLIFE (CONSERVATION)

LEVEL 2 TECHNICAL CERTIFICATE

ONE YEAR

If you enjoy practical work in a rural setting and have a keen interest in conservation this course will give you a range of countryside skills and you will learn about the wider countryside industry including aspects of conservation, fisheries and gamekeeping.

WHAT WILL I LEARN

By studying this course you will learn about the British countryside and how to safely manage a range of UK habitats for wildlife (including game and fish species).

Through practical teaching you will learn the basics of estate maintenance and land-based machinery. This will give you the foundation knowledge needed to work in the countryside or progress to the Level 3 Land and Wildlife course.

You'll be introduced to a range of UK habitats, surveying plants and animals and will gain first-hand experience of managing these different environments for the benefit of wildlife and people. As a Sparsholt student you'll also benefit from our lecturers' strong links with conservation organisations.

Find out more about how you can develop your skills and knowledge by engaging with employers – see page 26 for more details.



ENTRY REQUIREMENTS

English and Maths GCSEs at Grade 3, plus two other GCSEs at grade 3, or Level 1 in a relevant subject plus a good school or college reference.

WHAT CAN I STUDY NEXT?

- Level 2 Apprenticeship in Environmental Conservation
- Level 3 Advanced Technical Diploma Land and Wildlife Management (Countryside)



CAREERS

- Assistant warden/ countryside ranger
- Countryside recreation assistant
- Practical Habitat/ Estate worker
- Conservation
- Volunteering/Internships



SEE SPARSHOLT.AC.UK

for full list of topics covered, any optional additional qualifications and much more.



MY FUTURE IN FOCUS



I chose Sparsholt because of the opportunity to board and it also has lovely facilities. The atmosphere here is really busy, there's always something going on. We learn a lot of skills and do a lot of networking with other people.

I hope to become an ecologist and this course has definitely helped me get closer to that. I can't recommend it strongly enough.

SOPHIE

LAND AND WILDLIFE STUDENT
GILLINGHAM SCHOOL

LAND AND WILDLIFE MANAGEMENT (COUNTRYSIDE AND CONSERVATION) LEVEL 3

TWO YEARS – YEAR 1 ADVANCED TECHNICAL DIPLOMA (540)


YEAR 2 ADVANCED TECHNICAL EXTENDED DIPLOMA (1080)

This A Level equivalent course will teach you the fundamentals of conservation, wildlife management and the environment. You will develop both your practical countryside skills and your understanding of ecology and the environment.

WHAT WILL I LEARN

You'll work both on the 450 acre College estate and off-site on work placements with conservation organisations and you may also take part in fascinating study tours and site visits to places such as the World Heritage Dorset coastline, the New Forest and South Downs National Parks, the Cairngorms National Park and the London and Oxford Natural History Museums. You will also visit and be involved with the day-to-day management of a range of local conservation sites working in conjunction with a range of countryside professionals and organisations.

You will learn the principles of ecology and environmental science providing you with a strong base of knowledge in addition to acquiring invaluable practical skills that will significantly enhance your employability and opportunities to continue your studies in higher education. As a Sparsholt student you'll benefit from our lecturers' strong links with conservation organisations including the National Trust, RSPB, Hampshire and Isle of Wight Wildlife Trust and Hampshire County Council – some of your potential future employers.



Find out more about how you can develop your skills and knowledge by engaging with employers – see page 26 for more details.

ENTRY REQUIREMENTS

English and Maths GCSE at grade 4, plus three other GCSEs at grade 4 or a Merit grade at Level 2 with Maths and English at grade 4. Applications from mature students are encouraged and will be considered on an individual basis.

WHAT CAN I STUDY NEXT?

- Degree courses in Ecology and Conservation, Environmental, Land Management, Countryside Management, Environmental Management and Marine Conservation.
- This course gives you UCAS tariff points towards entry to University.
- Complete a full Level 3 with us and we'll guarantee you an offer of a place on one of our relevant University Centre Sparsholt degree courses. Admissions Terms & Conditions apply – for full details go to sparsholt.ac.uk/university-centre

UNIVERSITY CENTRE
SPARSHOLT



SEE SPARSHOLT.AC.UK

for full list of topics covered, any optional additional qualifications and much more.




CAREERS

- Assistant conservation officer
- Nature reserve warden
- Countryside ranger
- Ecological surveyor
- Practical Estate Ranger/Worker
- Environmental education officer
- Self-employed habitat contractor
- Ecologist

ENGLISH AND MATHS





Most employers, colleges and universities are now asking for a minimum of a GCSE grade 4 and above in English and Maths, which is why at Sparsholt, we ensure you work towards achieving this as part of your course. This will be through GCSE classes or Functional Skills in Maths and/or English.

MATHEMATICS GCSE

ENGLISH LANGUAGE GCSE

FUNCTIONAL SKILLS IN ENGLISH AND MATHS ENTRY LEVEL 3

FUNCTIONAL SKILLS IN ENGLISH AND MATHS LEVEL 1

FUNCTIONAL SKILLS IN ENGLISH AND MATHS LEVEL 2

ARE YOU 16–18?

If you have a GCSE grade 3 in English/Maths, you will study the GCSE course alongside your main programme of study to raise your grade to a 4 or above.

ARE YOU 19–25 YEARS OLD WITH AN EHCP?

If you do not have a GCSE grade 4 in English and Maths, you will be required to continue working towards improving English and Maths and, if appropriate, gaining qualifications.

GET IN TOUCH

Email askme@sparsholt.ac.uk for more information

MATHEMATICS GCSE

ONE YEAR

The course aims to give you greater knowledge in essential mathematical skills that can be used in day-to-day activities. We offer two levels: foundation or higher, depending on your current grade and aspirations. It is essential that you are committed to studying Maths at GCSE.

We expect you to attend every session and work hard to develop your mathematical skills and aptitude for the subject. Interpret and communicate mathematical information in a variety of forms appropriate to the information and context.

Acquire and use problem solving strategies. Select and apply mathematical techniques and methods in mathematical, every day and real world situations.

Reason mathematically, make deductions and inferences and draw conclusions. Develop knowledge, skills and understanding of mathematical methods and concepts.

ENTRY REQUIREMENTS

GCSE Maths at grade 3 or a Level 1 in Functional Maths. Some students will progress to Functional Maths Level 2.

WHAT CAN I STUDY NEXT?

GCSE Maths at grade 4 is required by many employers and for entry to higher education. Employers in all sectors like you to have maths qualifications as it demonstrates ability in a core subject.

The skills learned in this subject are useful for progression on to further areas of study.

MY FUTURE IN FOCUS



My teacher has helped me understand more clearly everything I struggled with in school. The techniques she uses are very effective and the lessons are educational yet fun. Achieving English will help me massively with more opportunities in the future.

CALLUM

ENGLISH LANGUAGE GCSE

ENGLISH LANGUAGE GCSE

ONE YEAR

WHAT WILL I LEARN

The 1-year English Language GCSE has been designed to engage and motivate you through a choice of texts, themes, and real-life writing tasks. We aim to teach you to organise your writing, improve your understanding, develop your approach, and prepare you for employability.

ENTRY REQUIREMENTS

GCSE English Language at grade 3 or a Level 1 in Functional English. Some students will progress to Functional English Level 2.

WHAT CAN I STUDY NEXT?

GCSE English at grade 4 is required by many employers and for entry to higher education. Employers in all sectors like you to have English qualifications as it demonstrates ability in a core subject. The skills learned in this subject are useful for progression on to further areas of study.

FUNCTIONAL SKILLS IN ENGLISH AND MATHS

ONE YEAR

WHAT WILL I LEARN

If you are an Entry Level or Level 1 student and do not have a GCSE grade 3 or above you will take either Functional Skills or GCSE Maths and/or English as part of your programme of study. These are building block qualifications that enable you to build on your existing skills and achieve a nationally recognised qualification.

TOPICS COVERED

Functional English

You will gain skills and a qualification recognised by employers in reading, writing, speaking and listening – essential for working life.

Functional Maths

You will focus on analysis, working on scenario-based problems using Maths. You will gain skills and a qualification, recognised by employers, needed for everyday life and employment.

ENTRY REQUIREMENTS

The level you study will be determined by your previous achievement and an assessment during your induction.

WHAT CAN I STUDY NEXT?

Level 1 or Level 2 English and/or Maths qualifications are required for entry on to higher level college courses. These qualifications are recognised and valued by employers in all sectors as well as universities.

EQUINE STUDIES



SEE SPARSHOLT.AC.UK

for full information on courses, facilities and much more.



BHS CHALLENGE AWARDS

On all of our courses the British Horse Society Challenge Awards course content is embedded as part of the practical and theory instruction (depending on which pathway you are on).

There are opportunities for students to use the knowledge gained to obtain multiple Challenge Award modules which can advance you straight to your BHS Stage 2 exam (exam fees apply) after completion of your Ride Safe Exam.

Our BHS highly commended facilities mean we can provide an excellent start to your career in the equine industry. The purpose-built Equine Centre hosts a variety of resources and opportunities for learners and our enthusiastic staff are committed to providing the very best learning experience. Choose the right course for you – up to Master's level – and you'll be learning in an environment dedicated to success.

EQUINE STUDIES LEVEL 1

EQUINE STUDIES LEVEL 2

EQUINE STUDIES LEVEL 3



CAREERS

- Competition Groom or Rider
- Equine Nutritionist
- Equine Veterinary Nurse
- Riding Instructor
- Equine Behaviourist
- Racing Industry
- Animal Physiotherapist/Osteopath/Chiropractor



UNIVERSITY CENTRE
SPARSHOLT

Degree courses also available, find out more here.



Apprenticeships

Apprenticeships available

MEET THE EXPERT

STEPH NAYLOR
CURRICULUM LEADER



I gained my BSc in Equine Science from Sparsholt many years ago alongside gaining my BHS coaching qualifications where I realised my passion for teaching others. I then went on to gain a PGCE and took up teaching and coaching full-time. I particularly enjoy teaching Equine Biology and Behaviour and love to hear and discuss my students' ideas and views.

UNIVERSITY DESTINATIONS

- University Centre Sparsholt
- Royal Agricultural University
- University Centre Hartpury
- Moulton College
- Writtle University College

INDUSTRY LINKS

- British Dressage
- British Showjumping
- The British Horse Society (BHS)
- The British Equestrian Federation
- Racing to School
- Simple Systems
- Liphook Equine Hospital
- The Barn Equine Hospital

FACILITIES

- Equestrian performance studio
- Stabling for up to 66 horses
- Four competition size arenas; 1 indoor and 2 outdoor sized 60 x 30m and our international arena, 70 x 50m
- Covered horse-walker
- Grass rides
- Cross country schooling field
- Weighbridge
- Equine Stocks
- Natural horsemanship pen
- Full sized equine skeleton
- BHS qualified riding instructors
- BHS practical instruction embedded in training
- Various livery and loan options available
- Charisma, our Racewood Eventing Simulator

EQUINE STUDIES (RIDING AND NON-RIDING PATHWAYS AVAILABLE) LEVEL 1

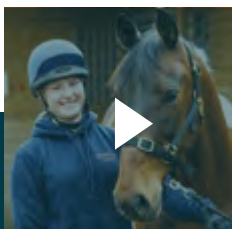
ONE YEAR

This course is ideal if you want to start your journey into a career with horses.

WHAT WILL I LEARN

As a land-based course you will be based at the Equine Centre undertaking a lot of practical lessons and industry experience. You will also spend some time developing your English and Maths and writing some tasks that are based on what you have been learning in your practicals.

You will spend multiple days a week at the Equine Centre, caring for the horses and undertaking daily duties, as well as spending a term working at the College's Animal Health and Welfare Research Centre. During the course you'll visit a range of equine businesses and take part in trips to event venues such as The London Horse Show and Blenheim and a study tour of the Brecon Beacons, helping you to gain a real insight into the industry.



VIDEO REEL

Sparsholt Equine Studies student Eve talking about her experience.

ENTRY REQUIREMENTS

Two GCSEs at grade 3–1 or above, or an Entry Level 3 qualification. If you wish to pursue a Riding Pathway, we will invite you to a riding assessment, which we will use to confirm the most appropriate pathway for you.

WHAT CAN I STUDY NEXT?

- Level 2 Equine Studies



CAREERS

- Competition Groom
- Groom
- Yard Assistant
- Stud Worker
- Retail
- Ride Leader
- Coach (with BHS qualifications)
- Racing Industry



SEE SPARSHOLT.AC.UK

for full list of topics covered, any optional additional qualifications and much more.

EQUINE STUDIES (RIDING AND NON-RIDING PATHWAYS AVAILABLE) LEVEL 2 TECHNICAL CERTIFICATE IN EQUINE CARE

ONE YEAR

This course is ideal if you want to enhance your practical skills and knowledge for future employment in the equine industry or for higher level study.

WHAT WILL I LEARN

You'll enjoy practical and theory sessions to learn how to handle a variety of horses, develop your riding and husbandry skills and broaden your knowledge of subjects such as horse anatomy. During the course we hope to offer visits to a range of equine businesses, a study tour to the Brecon Beacons and trips to international events such as Olympia, Badminton, and Blenheim, helping you to gain a real insight into the industry.

If you are not a confident rider or do not wish to ride, a non-riding option is also available. This qualification covers the skills you will need to progress to further learning and training, or to enter the world of work in the equine industry.

Find out more about how you can develop your skills and knowledge by engaging with employers – see page 26 for more details.



ENTRY REQUIREMENTS

Four GCSEs including Maths and English at grade 3 or a Level 1 qualification plus GCSE English and Maths at grade 3 or Functional Skill L1 English and Maths. If you wish to pursue a Riding Pathway, we will invite you to a riding assessment, which we will use to confirm the most appropriate pathway for you.

WHAT CAN I STUDY NEXT?

- Level 3 Equine Studies



CAREERS

- Competition Groom
- Groom
- Yard assistant
- Stud worker
- Retail
- Ride Leader
- Racing Industry
- Farrier Apprentice
- Saddler Apprentice
- Coach (with BHS Qualifications)



SEE SPARSHOLT.AC.UK

for full list of topics covered, any optional additional qualifications and much more.



MY FUTURE IN FOCUS



I have always had a passion to work with horses and Sparsholt has helped me learn how to begin my career, giving me the opportunity to learn what they are looking for in the industry. The course has a good ratio of theory and practical.

LARA

EQUINE STUDENT
EGGAR'S SCHOOL

EQUINE STUDIES (RIDING AND NON-RIDING PATHWAYS AVAILABLE) LEVEL 3 ADVANCED TECHNICAL CERTIFICATE/DIPLOMA


TWO YEARS

You'll gain detailed academic knowledge and understanding of horse management and equitation through both theory and practical sessions.

WHAT WILL I LEARN

This qualification gives you the opportunity to learn about and build on the essentials of working with horses. You will develop further practical skills and gain an understanding of business skills which are important for progression into a wide and diverse range of employment opportunities.

This qualification will also equip you with a wider range of more specialist skills and knowledge related to the equine industry. As a college we work with local employers who will contribute to the knowledge and delivery of training by providing demonstrations, talks on the industry and where possible work placements. This practically based training is ideal preparation for gaining employment in the equine industry or specialist further study.



Find out more about how you can develop your skills and knowledge by engaging with employers – see page 26 for more details.



SEE SPARSHOLT.AC.UK

for full list of topics covered, any optional additional qualifications and much more.

ENTRY REQUIREMENTS

Level 3 Advanced Technical Certificate – Four GCSEs including English or Maths at grade 4 or Level 2 at a Pass plus GCSE at a 4 or above or a Functional Skills Level 2 in English or Maths. Level 3 Advanced Technical Diploma – Five GCSEs including English, Maths and Science at grade 4 or Level 2 at Merit level plus GCSE at a 4 or above or a Functional Skills Level 2 in English and Maths. If you wish to pursue a Riding Pathway, we will invite you to a riding assessment, which we will use to confirm the most appropriate pathway for you.

WHAT CAN I STUDY NEXT?

- FdSc or BSc degrees in Equine Science or Equestrian Performance Management, either at University Centre Sparsholt or another institution.
- This course gives you UCAS tariff points towards entry to University.
- Complete a full Level 3 with us and we'll guarantee you an offer of a place on one of our relevant University Centre Sparsholt degree courses. Admissions Terms & Conditions apply – for full details go to sparsholt.ac.uk/university-centre

UNIVERSITY CENTRE
SPARSHOLT



CAREERS

- Riding instructor
- Farrier Apprentice
- Stud or stable manager
- Equine veterinary nurse or technician
- Equine nutritionist
- Journalist
- Retail
- Event management
- Groom
- Racing Industry

FISHERY STUDIES & AQUATICS

(LAND AND WILDLIFE)





As a leader in Fishery and Aquatic studies recognised worldwide for our expertise in providing fishery studies training, our onsite facilities and our industry links, we have everything you need to start your career in this sector, offering the best training for a career working with freshwater fisheries and fish farming, and exotic and ornamental fish.

LAND-BASED STUDIES (FISHERIES AND GAME) LEVEL 1

LAND AND WILDLIFE (FISH) LEVEL 2 TECHNICAL CERTIFICATE

LAND AND WILDLIFE MANAGEMENT (FISH) LEVEL 3



CAREERS

- Fish Farming
- River Keeping
- Fishery Manager
- Conservation Ranger
- River Restoration Worker
- Angling/Fishing Equipment Sales
- Aquatics/Ornamental Retail



UNIVERSITY CENTRE

SPARSHOLT

Degree courses also available, find out more here.



SEE SPARSHOLT.AC.UK

for full information on courses, facilities and much more.

MEET THE EXPERT

KINGSLEY DAVIS
LECTURER



UNIVERSITY DESTINATIONS

- University Centre Sparsholt
- University of Portsmouth
- University of Plymouth
- University of Stirling
- Aberystwyth University

INDUSTRY LINKS

- Institute of Fishery Management
- Ornamental Aquatic Trade Association (OATA)
- British and Irish Association of Zoos and Aquariums (BIAZA)
- British Trout Association
- Environment Agency
- Wild Trout Trust
- Angling Trust

FACILITIES

- The Aquatic Research and Conservation Centre
- Salmonid Rearing and Trials Centre
- Coarse Fishing Lake
- Electrofishing equipment to take surveys of stock

After studying my BSc at Sparsholt I have gained a wide variety of industry experience, including shellfish farming, fisheries and conservation management and trout farming. With my varied and specialist experience I hope to inspire and motivate the next generation of fish and aquatic enthusiasts.

LAND-BASED STUDIES (FISHERIES AND GAME)

LEVEL 1

ONE YEAR

During this course you'll develop basic practical skills and receive an introduction and insight into the land-based industries (including gamekeeping and fisheries). You will also develop basic estate and habitat management skills and will learn about how to look after game birds, fish and other wildlife.

WHAT WILL I LEARN

The course is very practical and involves working on the college estate and at the Game and Wildlife Centre. You'll learn how to operate different types of machinery, power and hand tools. You will also look at topics relating to your specific area of interest, either gamekeeping or fisheries management.



VIDEO REEL

Sparsholt Fisheries student
Fraser talking about his experience



ENTRY REQUIREMENTS

GCSEs at grade 3–1 or above, plus a good reference from your school or college.

WHAT CAN I STUDY NEXT?

- Level 2 Technical Certificate in Land and Wildlife
- (Game) or (Fish) or (Countryside)
- Level 2 Apprenticeship in Gamekeeping



CAREERS

Progression to Level 2 courses with career pathways:

- Underkeeper
- Assistant keeper
- Game farm assistant
- Conservation worker/volunteer
- Estate worker
- Assistant river keeper
- Aquatics retail



SEE SPARSHOLT.AC.UK

for full list of topics covered, any optional additional qualifications and much more.

LAND AND WILDLIFE (FISH)

LEVEL 2 TECHNICAL CERTIFICATE

ONE YEAR

If you enjoy practical work and have a keen interest in fishing and fishery management this course will give you a broad range of knowledge and skills.

WHAT WILL I LEARN

By studying this course you will learn about the British countryside and how to safely manage a range of UK habitats to encourage healthy fish populations and other wildlife. Through practical teaching you will learn the basics of estate maintenance and land-based machinery.

As a student on the Land and Wildlife (Fish) pathway, you will have a specific focus on both the game and coarse fishing industries acquiring the knowledge and skills you will need. You'll be involved in a range of practical activities both at the College and off-site at fish farms, local rivers and stillwater fisheries.

You will also look at aspects of conservation and game keeping. This will give you the foundation knowledge needed to work in the countryside/ fisheries industry or progress to the Level 3 Land and Wildlife course. You'll also put your skills into practice during a work placement, either with an industry-based employer or at the College, which will help you to build up valuable contacts and potentially gain employment.

ENTRY REQUIREMENTS

English and Maths GCSEs at grade 3, plus two other GCSEs at grade 3 or Level 1 qualification and a good school or college reference.

WHAT CAN I STUDY NEXT?

- Level 3 Advanced Technical Diploma/Extended Diploma Land and Wildlife Management

Find out more about how you can develop your skills and knowledge by engaging with employers – see page 26 for more details.



CAREERS

- Trout, carp or ornamental fish farms
- Sport fisheries
- Aquatic retail shops



SEE SPARSHOLT.AC.UK

for full list of topics covered, any optional additional qualifications and much more.



MY FUTURE IN FOCUS

FRASER

LAND AND WILDLIFE STUDENT (FISH)
SOUTH CHARNWOOD HIGH SCHOOL

The course is the perfect mix of practical and classroom. My highlight is definitely the practical side.

We go out to sites all over the south of England learning about fish in the workplace. With Sparsholt you also have the great opportunity of an industry placement. I'm going to Calverton Fish Farm and this will help me network in the industry and gain contacts for the future.

LAND AND WILDLIFE MANAGEMENT (FISH)

LEVEL 3

TWO YEARS – YEAR 1 ADVANCED TECHNICAL DIPLOMA (540)

YEAR 2 ADVANCED TECHNICAL EXTENDED DIPLOMA (1080)

This A Level equivalent course will provide you with the knowledge and skills you will need to work safely in the Land and Wildlife industries.

WHAT WILL I LEARN

Through a combination of theory and practical field-based sessions you will learn about the core subjects of ecology and conservation, machinery and estate maintenance. In addition, as a Fisheries student you will also be taught by industry experts covering fishery management; including stillwater and rivers, the angling industry or aquatics management, aquarium systems and exotic animal husbandry. Off-site practicals, external speakers and industry visits will also give you the opportunity to develop valuable industry contacts.

You'll also be expected to undertake a placement within the fishing/fisheries sector giving you the opportunity to build your industry and employment contacts.

Find out more about how you can develop your skills and knowledge by engaging with employers – see page 26 for more details.



ENTRY REQUIREMENTS

English and Maths GCSE at grade 4, plus three other GCSEs at grade 4 or a Merit grade at Level 2 with Maths and English at grade 4.

WHAT CAN I STUDY NEXT?

- FdSc in Sport Fisheries and Aquaculture or Marine Ecology and Conservation
- BSc (Hons) in Aquaculture and Fishery Management, Marine Biology, Aquatic Biology or Aquatic Zoology
- This course gives you UCAS tariff points towards entry to University.
- Complete a full Level 3 with us and we'll guarantee you an offer of a place on one of our relevant University Centre Sparsholt degree courses. Admissions Terms & Conditions apply – for full details go to **sparsholt.ac.uk/university-centre**

UNIVERSITY CENTRE
SPARSHOLT



SEE SPARSHOLT.AC.UK

for full list of topics covered, any optional additional qualifications and much more.



CAREERS

- Assistant fishery or fish farm manager
- Environment Agency technician
- River keeper
- Tackle and bait retail and manufacturing
- Angling coach
- Pond design and building
- Aquatic retail industry
- Research and conservation
- Sport fishery manager
- Aquarium curator

FOUNDATION STUDIES PROGRAMME



SEE SPARSHOLT.AC.UK

for full information on courses, facilities and much more.

These are specialist programmes designed for students aged 16–24 who need to develop confidence and social skills and may require extra support or time to complete set work within a mainstream environment. Students may have attended a school for those with SEN, have an Education, Health and Care Plan, had learning support at school, or not achieved the grades to move to a vocational Level 1 programme. All of our courses involve working outdoors in all weathers and accessing the whole of the campus.

FOCUS ON LIFE SKILLS

FIRST STEPS TO ANIMAL CARE

FIRST STEPS TO LAND-BASED STUDIES

FIRST STEPS TO SPORT AND OUTDOOR EDUCATION

WHAT WILL I LEARN

The programmes offer a flexible curriculum that prepares young people for working life, independence and further study. We follow a learner-centred approach, enabling students to take responsibility for their own learning. Foundation Learning programmes are studied at entry level. All timetables include practical vocational sessions, personal and social development, employability skills, on-site work experience and independent living skills. Programmes also include English, Maths and Digital Skills.

Students have access to a wide range of excellent, high-quality vocational experiences, specialist resources and facilities across our campus, giving the opportunity to learn in appropriate contexts. These include the Animal Health and Welfare Research Centre, Farm, Equine Centre, Horticulture facilities and Sports Centre.

Moving into further education can seem a big step but don't worry, the college supports students with transition. This includes meeting the learner, parents, carers, school staff and external agencies to ensure the course is right for each individual. There will also be taster sessions at college enabling learners to understand the next steps. We also support learners to transition out of college into the next phase of their development – further education, work based training, supported or paid employment and/or independent living. Students will take part in a learner-centred review where next steps can be planned.

HOW TO APPLY

Once students have applied to Foundation Learning online using the college website, the college will contact your school and any other professionals you are working with to find out a little more about you. We will then invite you in for an interview where we can discuss the best options for you from our courses and tell you more about what you can expect from the college.

To discuss applying, please email: askfoundation@sparsholt.ac.uk

FOCUS ON LIFE SKILLS

The aim of this study programme is for learners with a range of Special Educational Needs and/or Disabilities (SEND) to develop independence and successfully transition into adulthood. The programme aims to provide a differentiated and individualised approach to each learner's programme at college in order to work towards outcomes and aspirations for the future.

Learners will learn about all aspects of our curriculum offer, animal care, agriculture and horticulture and will have the opportunity to do lots of practical work experience within the college.

LEARNERS WILL:

- Develop communication skills
- Work towards individualised goals
- Develop independent living skills
- Develop employability skills
- Be an active member of the college community
- Have opportunities to try all aspects of the vocational offer

ENTRY REQUIREMENTS

No formal entry requirements are needed within Foundation learning. All learners are considered on an individual basis and matched to a course that is best placed to meet their needs, support their outcomes and move them towards their aspirations. Students should have an interest in one of our vocational areas and attend an interview and a taster day as part of their transition.

SEND INDEPENDENCE HUB

In partnership with Hampshire County Council and in response to a local need, our 5-day independence hub is for young people 16–18 with severe or complex needs.

The programme is based at our Andover Campus, but students will have bespoke timetables and will access Sparsholt facilities as part of their five days.

THE PROGRAMME WILL INCLUDE:

- Work skills
- Independent living – including food preparation, cleaning, shopping, community access for leisure and health, travel training
- Exercise
- Communication sessions
- Digital skills
- Enterprise
- Creative opportunities
- Tutorial



ENTRY 3 – PATHWAYS TO...

The aim of this study programme is for learners to develop skills to successfully transition to another college course or supported/paid work. All of the group sizes are small and have dedicated learning support in the sessions and students are supported to navigate the campus both in and out of lessons. Students will develop the personal independence, confidence, skills and knowledge they need to progress to Level 1 in their chosen vocational area or one of our work-based learning courses.

LEARNERS WILL:

- Develop English and Maths Skills
- Develop independence skills
- Work towards individualised goals
- Complete a vocational qualification in their chosen area

ANIMAL CARE

This study programme provides the ideal introduction to working with animals. You will work towards a City and Guilds accredited qualification that enables the correct practical skills and knowledge for caring for companion animals.

You will learn about the different types of animals within the British Pet Trade and farming industry and carry out a range of practical activities, from cleaning animal housing to walking and exercising dogs and generally learning how to catch and restrain them for health checking and grooming. The course is assessed through practical observations and learners are required to complete knowledge evidence to achieve units.

LAND-BASED STUDIES

If you have an interest in being outside and want to get a job working in agriculture, gardening or landscaping this study programme is for you! This course will teach practical skills that help you to learn basic principles of caring for plants, cutting back hedges, maintaining woodland and looking after livestock. You will get a chance to try out different equipment and develop your practical skills.

SPORT AND OUTDOOR EDUCATION

This study programme is designed to provide you with the basic knowledge to prepare you for further study or employment within the sport and outdoor industry. The course will be highly practical with a big emphasis on being active and healthy. As part of the course learners will get to try a variety of different sports and outdoor activities and begin to develop skills such as coaching and teamwork.

**TO DISCUSS APPLYING,
PLEASE EMAIL: ASKFOUNDATION@SPARSHOLT.AC.UK**

ROUTES TO EMPLOYMENT

We are passionate about helping our learners move into the world of work and so we have developed our curriculum to include two work-based study programmes. These are available to suitable students who have previously studied one of our programmes in Foundation.

SUPPORTED INTERNSHIP

Supported Internships provide an individualised programme of study for young people with an Education, Health and Care Plan (EHCP), who want to move into employment and need extra support to do so. The programme has one primary aim which is to: wherever possible support young people to move into paid employment.

A TIMETABLE FOR AN INTERN COULD INCLUDE:

- English and Maths development
- Personal and social development
- Employability skills
- Workplace training
- Interns will have with a specialist job coach that visits them on their placement

COLLEGE LEARNING COMPANY

A one-year study programme where students can develop employability and independence skills through our college learning company, social enterprises run by staff and students here at the college. Students will have a uniform and be expected to conform to work expectations and will be completing practical tasks around the college campus.

A TIMETABLE FOR A MEMBER OF THE COLLEGE LEARNING COMPANY COULD INCLUDE:

- English and Maths development
- Personal and social development
- Employability skills
- Workplace training
- College Learning Company students will have a personal tutor to help with job coaching

ENTRY REQUIREMENTS

These courses are available to students who have studied one of our Foundation or Mainstream courses here at the college and have completed a successful work experience. Students will need to be able to get to the work placement on the internship, college will not provide transport to placement.

FOUNDATION LEARNING AT SPARSHOLT CAMPUS

SEND INDEPENDENCE

HUB – YEAR 1–3

16–18 YEARS – 5 DAYS PER WEEK

Students will be based at our Andover Campus but access facilities at the Sparsholt Site

A study programme for young people who have attended a specialist SEN School. The focus is on being independent, being part of the local community, being healthy and is all linked to employability skills within the land based sector.

There are smaller groups and high staff to student ratio.



**NEED LONGER
TO DEVELOP
YOUR SKILLS?**



FOCUS ON LIFE SKILLS – YEAR 1 – 3 DAYS PER WEEK

Increased transition to life after college, voluntary work, work experience. If relevant, college can help with assessment for adult services.



**NEED MORE PRACTICAL
WORK EXPERIENCE?**

FOCUS ON LIFE SKILLS – YEAR 2 – 3 DAYS PER WEEK

Working closely with social care and providers to help with a smooth transition to life after education.



**PAID WORK
VOLUNTEERING
SUPPORT FROM ADULT SERVICES**

FIRST STEPS TO ANIMAL CARE

An entry level study programme, for young people who are interested in working with animals. Students have the opportunity to work with a wide range of animals in our specialist facilities. It also includes an internal work experience, English, Maths and digital skills. You are taught in smaller groups with a high staff to student ratio.



**NEED LONGER
TO DEVELOP
YOUR SKILLS?**



NEXT STEPS TO ANIMAL CARE

For students who need a bit longer in Foundation. Increased work experience continued vocational practical sessions.



COLLEGE LEARNING COMPANY

A one-year study programme where you can develop employability and independence skills through our college learning companies, social enterprises run by staff and students here at the college.

PROGRESSION ROUTES

All of our study programmes are designed around the preparing for adulthood agenda.

FIRST STEPS TO LAND BASED STUDIES

An entry level study programme, for young people who are interested in working outdoors. Students have the opportunity to learn about horticulture and woodland skills and work across our amazing campus. It also includes an internal work experience, English, Maths and digital skills. You are taught in smaller groups with a high staff to student ratio.

FIRST STEPS TO SPORT & OUTDOOR EDUCATION

An entry level study programme, for young people who are interested in working in sport or outdoor education. Students have the opportunity to try a number of practical activities and work across our amazing campus. It also includes work experience, English, Maths and digital skills. You are taught in smaller groups with a high staff to student ratio.

NEXT STEPS TO LAND BASED

For students who need a bit longer in Foundation. Increased work experience continued vocational practical sessions.

NEXT STEPS TO SPORT & OUTDOOR

For students who need a bit longer in Foundation. Increased work experience continued vocational practical sessions.

i WANT TO GET A JOB BUT NEED EXTRA SUPPORT? HAVE AN EHCP?

i HAVE THE APPROPRIATE QUALIFICATIONS AND FOUND A VOCATIONAL AREA YOU ARE INTERESTED IN?

LEVEL 1

Vocational Study Programme
1 year

SUPPORTED INTERNSHIP

A one year study programme where you are in a workplace 3 days a week training for work.

APPRENTICESHIP

Level 2

LEVEL 2

Vocational Study Programme
1 Year

GAME AND WILDLIFE MANAGEMENT

(LAND AND WILDLIFE)





Game and Wildlife Management at Sparsholt College has an enviable reputation in the industry as a centre for the training and development of outstanding students, who progress to a successful career in the industry.

This success is built on the outstanding facilities that students use, and links with an international network of industry contacts, to develop knowledge and skills that are valued by employers.

LAND-BASED STUDIES (FISHERIES AND GAME) LEVEL 1

**LAND AND WILDLIFE (GAME) LEVEL 2
TECHNICAL CERTIFICATE**

LAND AND WILDLIFE MANAGEMENT (GAME) LEVEL 3



CAREERS

- Gamekeeper or Beatkeeper
- Wildlife Ranger
- Deer Manager/Stalker



Apprenticeships

Apprenticeships available



SEE SPARSHOLT.AC.UK

for full information on courses, facilities and much more.

MEET THE EXPERT

ROD GREENWOOD
LECTURER



I gained a degree in Rural Resource Development and have managed game and wildlife in France, Belgium and the UK before teaching. I am passionate about deer management in the wider landscape and enjoy fly fishing.

UNIVERSITY DESTINATIONS

- University Centre Sparsholt
- Harper Adams University
- Royal Agricultural University

INDUSTRY LINKS

- Remington
- Raytrade UK Ltd
- Spartan Precision Equipment
- Promatic International Ltd
- Forestry England
- Public Health England
- The Game and Wildlife Conservation Trust
- Natural England
- Zeiss UK Ltd
- The National Gamekeepers' Organisation
- The British Deer Society
- The British Association for Shooting and Conservation (BASC)
- Shooting Times
- Owton's traditional family butchers

FACILITIES

- Game and Wildlife Centre
- Indoor and Outdoor Rifle Ranges and Clay Shooting site
- Game and Deer Larder
- Deer and Estate Management
- A herd of Sika
- Incubators and Hatchers for Game rearing

LAND-BASED STUDIES (FISHERIES & GAME)

LEVEL 1

ONE YEAR

During this course you'll develop basic practical skills and receive an introduction and insight into the land-based industries (including gamekeeping and fisheries). You will also develop basic estate and habitat management skills and will learn about how to look after game birds, fish and other wildlife.

WHAT WILL I LEARN

The course is very practical and involves working on the college estate and at the Game and Wildlife Centre. You'll learn how to operate different types of machinery, power and hand tools. You will also look at topics relating to your specific area of interest, either gamekeeping or fisheries management.

ENTRY REQUIREMENTS

GCSEs at grade 3–1 or above, plus a good reference from your school or college.

WHAT CAN I STUDY NEXT?

- Level 2 Technical Certificate in Land and Wildlife (Game) or (Fish) or (Countryside)
- Level 2 Apprenticeship in Gamekeeping



CAREERS

Progression to Level 2 courses with career pathways:

- Underkeeper
- Assistant keeper
- Game farm assistant



SEE SPARSHOLT.AC.UK

for full list of topics covered, any optional additional qualifications and much more.

LAND AND WILDLIFE (GAME) LEVEL 2 TECHNICAL CERTIFICATE

ONE YEAR

By studying this course you will learn about the British countryside and how to safely manage a range of UK habitats for both game species and other wildlife.

WHAT WILL I LEARN

Through practical teaching you will learn the basics of estate maintenance and land-based machinery. As a student on the Land and Wildlife (Game) pathway, you will also have a specific focus on the Game and Wildlife industry and you will acquire the knowledge and skills you will need to successfully manage wildlife for the benefits of both field sports and conservation. You'll be involved in a range of practical activities both at the College and off-site at local shooting estates, where you'll be working alongside gamekeepers and wildlife managers. You'll also put your skills into practice during a placement with an industry-based employer, which will help you to build up valuable contacts and potentially gain employment.



VIDEO REEL

Sparsholt Land and Wildlife student Josh talking about his experience.



SEE SPARSHOLT.AC.UK

for full list of topics covered, any optional additional qualifications and much more.

ENTRY REQUIREMENTS

Maths and English GCSEs at grade 3, plus two other GCSEs at grade 3 or Level 1 qualification plus a good school or college reference.

WHAT CAN I STUDY NEXT?

- Level 3 Advanced Technical Diploma Land and Wildlife Management (Game) or (Countryside)
- Apprenticeship in Gamekeeping at Level 3



Find out more about how you can develop your skills and knowledge by engaging with employers – see page 26 for more details.



CAREERS

- Beatkeeper
- Underkeeper
- Pest controller
- Estate worker



MY FUTURE IN FOCUS



Being here is a big difference from school because you get to experience what it's like in the workplace and get ready for a job, which will be soon to come.

After college I want to ideally become a head keeper on an estate. Sparsholt have really upped my skill levels. I would recommend Sparsholt highly to everyone because it makes you work ready.

JOSH

LAND AND WILDLIFE STUDENT (GAME)
TESTBOURNE COMMUNITY SCHOOL

LAND AND WILDLIFE MANAGEMENT (GAME)

LEVEL 3

TWO YEARS – YEAR 1 ADVANCED TECHNICAL DIPLOMA (540)


YEAR 2 ADVANCED TECHNICAL EXTENDED DIPLOMA (1080)

This A Level equivalent course will provide you with the knowledge and skills you will need to work safely in the Land and Wildlife industries.

WHAT WILL I LEARN

Through a combination of theory and practical field-based sessions you will learn about ecology and conservation, machinery and estate maintenance. In addition, as a Game and Wildlife student you will also be taught by industry experts covering subjects such as game and deer management, firearms and pest and predator control via both practical and theoretical teaching.

Off-site practicals, external speakers and industry visits will also give you the opportunity to develop valuable industry contacts. You'll also be expected to undertake placements on sporting estates, giving you the opportunity to build your industry and employment contacts.



Find out more about how you can develop your skills and knowledge by engaging with employers – see page 26 for more details.

ENTRY REQUIREMENTS

English and Maths GCSE at grade 4 plus three other GCSEs at 4 or Level 2 at Merit with Maths and English at grade 4.

WHAT CAN I STUDY NEXT?

- Degree courses in Ecology and Rural Estate Management
- Level 4 Apprenticeships
- This course gives you UCAS tariff points towards entry to University.
- Complete a full Level 3 with us and we'll guarantee you an offer of a place on one of our relevant University Centre Sparsholt degree courses. Admissions Terms & Conditions apply – for full details go to sparsholt.ac.uk/university-centre

UNIVERSITY CENTRE
SPARSHOLT



SEE SPARSHOLT.AC.UK

for full list of topics covered, any optional additional qualifications and much more.



CAREERS

- Underkeeper or beatkeeper working on a sporting estate
- Wildlife ranger with the Forestry Commission
- Deer manager

HORTICULTURE



An Overview

Using woodchip and leaving to rot in place, this shed gives a unique profile to a garden. The shed is a 10' x 10' structure, with a green roof made of woodchip and grass. The shed is surrounded by a variety of plants, including a large tree, a large shrub, and a large flower bed. The shed is a perfect example of a garden shed that is both functional and beautiful.

RHS Chelsea Flower Show 2023

2023

116 | FURTHER EDUCATION COURSES 2024/2025





With a national reputation for excellence in horticulture and garden design and excellent industry links, Sparsholt will provide you with the valuable knowledge and training to launch you directly into the industry or higher study at university. Our expert teaching team is renowned within the industry, regularly winning Gold Medals at the RHS Chelsea Flower Show.

HORTICULTURE LEVEL 1

HORTICULTURE LEVEL 2

ORNAMENTAL HORTICULTURE T LEVEL



CAREERS

- Garden Design
- Landscaping
- Commercial Production
- Garden Maintenance



Apprenticeships

Apprenticeships available



SEE SPARSHOLT.AC.UK

for full information on courses, facilities and much more.

MEET THE EXPERT

CHRIS BIRD
LECTURER



I have always been interested in plants and their arrangement and work closely with outside organisations, such as Plant Heritage, the RHS and the National Trust, to promote their use. Since 1998 I have co-ordinated the College's display for the RHS Chelsea Flower Show, winning 24 medals including ten Gold and seven 'Best in Category' awards.

UNIVERSITY DESTINATIONS

- University Centre Sparsholt
- University of Sheffield
- University of Gloucester
- Nottingham Brooks University

INDUSTRY LINKS

- The Royal Horticultural Society (RHS)
- British Association of Landscape Industries (BALI)
- The Chartered Institute of Horticulture
- The National Trust
- Association of Professional Landscapers
- Thompson & Morgan
- Gilbert White's House & Gardens
- The GTC & BIGGA
- Sir Harold Hillier Gardens
- Hillier Nurseries Ltd
- The Eden Project
- Marwell Wildlife
- Hinton Ampner

FACILITIES

- BBC Gardeners' Question Time garden
- Five hectares dedicated to horticultural practice
- Production polytunnels
- Garden design studio
- Tropical glasshouse
- Laser levels for surveying, hydroponics for use with propagation
- National Collection of Hampshire & IOW Apples

HORTICULTURE LEVEL 1

ONE YEAR

This course will give you a practical introduction to horticulture, allowing you to learn and develop the skills needed for employment within the industry.

WHAT WILL I LEARN

Plant identification and science is introduced gradually over the year allowing you to develop knowledge, ready to progress on to Level 2. Units such as Turf Maintenance, Hard Landscaping and Machinery Operations are all introduced at Level 1. A range of visits to support the curriculum will be arranged over the year including Sir Harold Hillier Gardens and National Trust Gardens. You will also take part in work experience across the College grounds.

ENTRY REQUIREMENTS

GCSEs at grade 3–1 or above/successful completion of an Entry Level course.

You will be required to work towards Maths or English GCSE or Functional Skills if you do not hold sufficient English and Maths qualifications.

WHAT CAN I STUDY NEXT?

- Level 2 Technical Certificate in Horticulture
- Level 2 Apprenticeship in Horticulture/ Landscaping or Greenkeeping



CAREERS

- Amenity horticulture
- Garden centres
- Nurseries
- Greenkeeping



SEE SPARSHOLT.AC.UK

for full list of topics covered, any optional additional qualifications and much more.

HORTICULTURE

LEVEL 2 TECHNICAL CERTIFICATE

ONE YEAR

This practical and theory-based course will give you the skills and knowledge needed to progress into a specialised and increasingly sophisticated industry.

WHAT WILL I LEARN

You will gain knowledge and skills in plant identification, machinery operations and plant establishment and maintenance.

You'll also take part in weekly work experience on the College campus to familiarise yourself with a true working environment. A range of visits to support the curriculum will be arranged over the year including RHS Garden Wisley, Sir Harold Hillier Gardens and the National Trust Gardens.

Find out more about how you can develop your skills and knowledge by engaging with employers – see page 26 for more details.

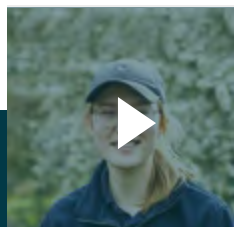


ENTRY REQUIREMENTS

Four GCSEs at grade 3 or above with Maths and English at grade 3 or relevant Level 1 qualification. You will be required to work towards Maths or English GCSE if you do not have a grade 4 or above.

WHAT CAN I STUDY NEXT?

- Ornamental Horticulture T Level
- Other Level 2 Technical Qualifications



VIDEO REEL

Sparsholt student Alice talking about her experience.



CAREERS

- Amenity horticulture
- Garden centres
- Nurseries
- Greenkeeping
- Hard landscaping



SEE SPARSHOLT.AC.UK

for full list of topics covered, any optional additional qualifications and much more.



ORNAMENTAL HORTICULTURE

T LEVEL

TWO YEARS

The T Level in Ornamental and Environmental Horticulture and Landscaping provides a unique opportunity to undertake a qualification that includes industry experience. Including core content such as sustainability, business, communication, Health and Safety and finance that underpins knowledge and understanding of the wider sector, your work placement throughout the two years will then enable you to put into practice your knowledge and understanding.

WHAT WILL I LEARN?

You'll learn how to establish, maintain, install and manage horticultural areas and designed landscapes and all about the tools, equipment and materials used. Skills in installing landscape features and planning and managing designed landscapes complete the picture.

ENTRY REQUIREMENTS

Five GCSEs at grade 9–4, including Science, English and Maths. Mature students may be considered with alternative qualifications or experience.

WHAT CAN I STUDY NEXT?

- FdSc and BSc courses in Horticulture, Landscape Architecture and Garden Design
- This course gives you UCAS tariff points towards entry to University.
- Complete a full Level 3 with us and we'll guarantee you an offer of a place on one of our relevant University Centre Sparsholt degree courses. Admissions Terms & Conditions apply – for full details go to sparsholt.ac.uk/university-centre

UNIVERSITY CENTRE
SPARSHOLT

Find out more about how you can develop your skills and knowledge by engaging with employers – see page 26 for more details.



SEE [SPARSHOLT.AC.UK](https://sparsholt.ac.uk)

for full list of topics covered, any optional additional qualifications and much more.




CAREERS

- Amenity horticulture
- Greenkeeping
- Garden design
- Commercial production
- Hard or soft landscaping
- Botanic and heritage gardening
- Science and research
- Therapeutic or social gardening



MY FUTURE IN FOCUS



The course teaches us all aspects of horticulture and the staff are passionate, knowledgeable and want you to thrive.

The highlight of my course has been being part of the plants team for our RHS Chelsea Flower Show garden.

For my work placement I worked as a grounds maintenance gardener, which complemented my course well and I hope to secure a Professional Work Placement at RHS Wisley in the Herbaceous Ornamentals team in September.

ALICE

HORTICULTURE STUDENT

MOTOR VEHICLE





Our talented team of staff are all industry trained and therefore ensure you have the practical knowledge and skills to work in the industry or progress to higher level study. The department has achieved outstanding results for the past five years. Level 1 and 2 fitting principles students take part in a 'Top Gear Go-karting' fastest lap challenge throughout the year. The courses and activities will develop personal and life skills, and include a community project helping local charities.

VEHICLE MAINTENANCE LEVEL 1

VEHICLE FITTING PRINCIPLES LEVEL 2

LIGHT VEHICLE MAINTENANCE AND REPAIR PRINCIPLES LEVEL 2

LIGHT VEHICLE MAINTENANCE AND REPAIR PRINCIPLES LEVEL 3



CAREERS

- Service Adviser
- Armed Forces
- Body Repair Shop
- Fast-fit Technician
- Parts Adviser



Apprenticeships

Apprenticeships available



SEE SPARSHOLT.AC.UK

for full information on courses, facilities and much more.

MEET THE EXPERT

FRANK POULSON
LECTURER



My passion for motor vehicles began on a Youth Training Scheme in Cyprus in the late 1980s. I spent 18 years in HM Forces as a Vehicle Mechanic/Instructor in the Royal Electrical and Mechanical Engineers. I have taught Mechanical Engineering for 10 years in further education. I am committed to passing on my knowledge and skills to enable students to follow their chosen path.

INDUSTRY LINKS

- Silverstone
- Motorparts Direct
- Santa Pod Raceway
- Mercedes-Benz World at Brooklands
- Institute of the Motor Industry (IMI)

FACILITIES

- Three new workshops
- Welding and fabrication workshop
- Fast-fit tyre and exhaust workshop
- Technical testing equipment for use with electric and hybrid cars



VEHICLE MAINTENANCE LEVEL 1

ONE YEAR

This course is a great starting point for your career in the motor vehicle industry, giving you the chance to use the equipment found in any motor vehicle workshop and learn the basic health and safety needed in the workplace.

WHAT WILL I LEARN

As well as learning basic driving techniques using the College's dual control car, you'll also have the opportunity to go on trips to Teamsport go-karting, Auto Sport International show, Santa Pod drag racing, Silverstone Education Centre and Moto GP, Mercedes World and MACH Engineering Show.

ENTRY REQUIREMENTS

GCSEs at grade 3–1 or above/successful completion of an Entry Level Course.

WHAT CAN I STUDY NEXT?

- IMI Level 2 Diploma in Vehicle Fitting Principles
- IMI Level 2 Diploma in Vehicle Maintenance and Repair
- Level 2 Motor Vehicle Apprenticeship



CAREERS

- Fast-fit workshop
- Tyre fitting
- Body repair centre



SEE SPARSHOLT.AC.UK

for full list of topics covered, any optional additional qualifications and much more.

VEHICLE FITTING PRINCIPLES

LEVEL 2

ONE YEAR

This course will develop your skills for the fast-fit industry. Alternatively, if you need some time to develop your practical and academic skills, it is also a great grounding for the Level 2 Light Vehicle Maintenance and Repair Principles course. As part of the course you'll also take part in some work experience to develop your employability.

WHAT WILL I LEARN

Our dedicated industry staff work with our students to achieve results consistently above the national average and encourage a real team spirit. You'll take part in trips and visits to places such as World Rally Championships in Wales, Auto Sport International show, Santa Pod drag racing, MACH Engineering Show and Beaulieu Motor Museum to broaden your knowledge of the industry ready for employment.

ENTRY REQUIREMENTS

Maths and English at grade 3 or completed Level 1 Diploma in Motor Vehicle and minimum of Level 1 Functional skills in English and Maths.

WHAT CAN I STUDY NEXT?

- Level 2 Maintenance Service and Repair (with English and Maths GCSE grade C/4 or above)
- Level 2 Apprenticeship in Vehicle Fitting-Fast Fit



CAREERS

- Fast-fit fitter
- Semi-Skilled vehicle fitter



SEE SPARSHOLT.AC.UK

for full list of topics covered, any optional additional qualifications and much more.

LIGHT VEHICLE MAINTENANCE AND REPAIR PRINCIPLES LEVEL 2 DIPLOMA

ONE YEAR

You'll learn to identify light vehicle components, understand component and unit operation, remove, check and refit components and adjust and maintain components and units.

WHAT WILL I LEARN

Our dedicated industry staff work with our students to achieve results consistently above the national average and encourage a real team spirit. You'll take part in trips and visits to places such as World Rally Championships in Wales, Auto Sport International show, Santa Pod drag racing, MACH Engineering Show and Beaulieu Motor Museum to broaden your knowledge of the industry ready for employment.



VIDEO REEL

Sparsholt Motor Vehicle student Mark talking about his experience.



ENTRY REQUIREMENTS

English and Maths at grade 4 (or above) or completed Level 2 Vehicle Fitting Principles plus grade 4 in English or Maths following resits.

WHAT CAN I STUDY NEXT?

- Light Vehicle Maintenance and Repair Principles, Level 3 Diploma
- Motor Vehicle Apprenticeship



CAREERS

- Semi-skilled service technician
- Vehicle parts, sales and store keeping
- A range of practical skills-based roles using industry standard tools for removing and refitting components
- Service Advisor



SEE SPARSHOLT.AC.UK

for full list of topics covered, any optional additional qualifications and much more.

LIGHT VEHICLE MAINTENANCE AND REPAIR PRINCIPLES LEVEL 3

ONE YEAR

This course covers the theory part of the Advanced Apprenticeship in Light Vehicle Service and Repair and is a mix of theory and practical work.

WHAT WILL I LEARN

You'll study the understanding, diagnosis and repair of light vehicle system faults. Our dedicated industry staff work with our students to achieve results consistently above the national average and encourage a real team spirit. You'll take part in trips and visits to places such as World Rally Championships in Wales, Auto Sport International show, Santa Pod drag racing, MACH Engineering Show and Beaulieu Motor Museum to broaden your knowledge of the industry ready for employment.

ENTRY REQUIREMENTS

Level 2 IMI Diploma in Vehicle Service and Repair Principles (or other awarding body equivalent qualification)/relevant industry experience and English and Maths at grade 4.

WHAT CAN I STUDY NEXT?

- Higher Education: Level 4 Motor Sport Courses
- Light Vehicle Apprenticeship



CAREERS

- Semi-skilled service technician
- Service adviser



SEE SPARSHOLT.AC.UK

for full list of topics covered, any optional additional qualifications and much more.



MY FUTURE IN FOCUS



Our practical lessons show us a realistic work environment and it's good to study the theory of a topic and then put it into use.

GEMMA

MOTOR VEHICLE STUDENT
PERINS SCHOOL

OUTDOOR ADVENTURE





Passionate about outdoor adventure? So are we! On our career-focused courses you'll be getting prepared for your future in this exciting industry with a wide range of practical learning experiences using our modern facilities and equipment, whilst learning the theoretical knowledge needed from our expert tutors. Our strong relationships with employers in the industry will give you an edge when it comes to finding your dream job in the sector.

SPORT BTEC LEVEL 2 EXTENDED CERTIFICATE

SPORT AND OUTDOOR ACTIVITIES BTEC LEVEL 3 NATIONAL EXTENDED DIPLOMA



CAREERS

- Outdoor Activities Instructor
- Water Sports/Paddle Board Instructor
- Rescue Services
- University
- Forest Schools
- Search & Rescue
- Ski Instructor
- High Ropes Design
- PPE Inspectors
- Guiding/leading expeditions
- Risk Management
- Teaching



SEE SPARSHOLT.AC.UK

for full information on courses, facilities and much more.

MEET THE EXPERT

SCOTT FANCOURT
LECTURER



As a previous Sparsholt student, I went on to represent Great Britain in canoe polo. I am a keen kayaker and enjoy winter mountaineering. I worked at the QE2 Activity Centre with children and adults with additional needs and am passionate about passing on my knowledge and expertise.

UNIVERSITY DESTINATIONS

- Oxford Brookes University
- University of Bath
- Cardiff Metropolitan University
- University of Loughborough
- Southampton Solent University
- University of Chichester

INDUSTRY LINKS

- The Chartered Institute for the Management of Sport and Physical Activity (CIMSPA)
- British Canoe Union
- Institute of Outdoor Learning
- Andover Town Football Club
- Marwell Resort
- Ferny Crofts Scout Activity Centre
- PGL
- Foxlease Activity Centre
- Southampton Water Activities Centre
- Mountain Training
- National Indoor Climbing Award Schemes
- British Cycling

FACILITIES

- Indoor Sports Centre
- Large purpose-built indoor climbing wall
- High quality fully equipped fitness suite and exercise studio
- Low ropes course for leadership training and instruction
- Exclusive access to on-site and local lakes for kayaking and canoeing

SPORT

BTEC LEVEL 2 EXTENDED CERTIFICATE

ONE YEAR

This course covers the practical and theoretical aspects of sport and provides the opportunity to progress on to our different Level 3 courses, or directly on to employment, as well as enjoying all the industry standard facilities of our state-of-the-art Sports Centre.

WHAT WILL I LEARN

Whilst studying on this course you will learn the underpinning knowledge of anatomy and physiology, principles of fitness training and exercise programme writing along with performance analysis. You will explore concepts involved in sports psychology and apply different sports performance skills and technique in team and individual sports.

This course also has a unique addition of outdoor adventure activities subjects to include water and land-based sports from kayaking to climbing and mountain biking, community coaching projects and much more.

ENTRY REQUIREMENTS

Four GCSEs at grade 3, Maths and English at grade 3, Level 1 Diploma or equivalent at grade Merit.

WHAT CAN I STUDY NEXT?

- Sport, Fitness and Personal Training BTEC Level 3 National Extended Diploma
- Sports Coaching and Development BTEC Level 3 National Extended Diploma
- Sport and Outdoor Activities BTEC Level 3 National Extended Diploma
- Uniformed Protective Services BTEC Level 3 National Extended Diploma



SEE SPARSHOLT.AC.UK

for full list of topics covered, any optional additional qualifications and much more.



CAREERS

- Leisure Assistant
- Sports Coaching
- Uniformed Protective Services
- Outdoor Activities Instructor
- Gym Instructor

SPORT AND OUTDOOR ACTIVITIES

BTEC LEVEL 3 NATIONAL EXTENDED DIPLOMA

TWO YEARS

This is a career-focused qualification with industry endorsement and accreditation, most notably from the Institute for Outdoor Learning (IOL), which will allow you to enter employment directly into the outdoor activities sector. There are many transferable skills learned in adventure training appropriate for the emergency services and armed forces.

WHAT WILL I LEARN

Throughout the course you will learn both water-based and land-based sporting disciplines, where you will master the practical skills, application and theories of climbing, mountain biking, kayaking and canoeing, amongst others.

Your first year of study will develop the personal skills required for water-based and land-based sports, to include a strong focus on health and safety factors involved in outdoor learning. The second year focuses on the applied leadership aspect of each sport, instructing participant groups from local secondary schools. Practical industry experience is essential and in the second year you will carry out an extended industry work placement on a seasonal paid contract as an Assistant Instructor, potentially leading to further training and employment.

As part of the course you will take part in trips and expeditions to North Wales, South Wales and Dartmoor, using our fleet of canoes, kayaks and mountain bikes.

ENTRY REQUIREMENTS

Five GCSEs including Maths and English at grade 4 or Level 2 at Merit level plus GCSE or Functional Skills Level 2 in English and Maths.



SEE SPARSHOLT.AC.UK

for full list of topics covered, any optional additional qualifications and much more.

WHAT CAN I STUDY NEXT?

Study at University at FdSc or BA/BSc (Hons) level.

Popular degree choices:

- Adventure Education and Facilitation
- Outdoor and Adventure Education
- Leisure Management
- Outdoor Adventure and Environment
- Water Sports Management
- Outdoor Adventure Leadership and Management
- Sports Coaching and Development



CAREERS

- Assistant Outdoor Activities Instructor
- Outdoor Activities Instructor
- Centre Manager
- Water Sports Instructor
- Paddle Sport Instructor
- Armed Forces and Emergency Services

A man wearing a blue hooded jacket, a white helmet with a green chin strap, and yellow-tinted sunglasses. He has a colorful rope coiled around his neck and is smiling. The background shows a clear blue sky and snow-capped mountains.

MY FUTURE IN FOCUS



I visited Sparsholt on an open day and really liked the environment; it also had great facilities such as the climbing wall, lake and fleet of bikes with direct access to local trails.

Sparsholt gave me the foundation skills and knowledge to launch a career in the outdoors. I'm now employed by Girlguiding as Deputy Centre Manager at one of their activity centres, and also work for myself offering technical advice to outdoor centres, performing ropes course inspections and guided mountaineering/climbing trips.

MATT

OUTDOOR ADVENTURE
GRADUATE

SPORT



Set within 450 acres of Hampshire countryside, the Sparsholt sports department provides outstanding facilities for high standards of learning. The sport and fitness industry is a dynamic and fast growing sector, with a wide and innovative range of career paths becoming available every year. From participating in a variety of sport and fitness activities, to learning about anatomy, physiology and the psychology of sport, our purpose-built Sports Centre provides the ideal learning space.

SPORT BTEC LEVEL 2 EXTENDED CERTIFICATE

SPORT, FITNESS AND PERSONAL TRAINING BTEC LEVEL 3

SPORTS COACHING AND DEVELOPMENT BTEC LEVEL 3



CAREERS

- Gym Instructor progressing to Personal Trainer
- Multi-Sport Coach
- Professional Athlete
- Physiotherapist
- University



SEE SPARSHOLT.AC.UK

for full information on courses, facilities and much more.

MEET THE EXPERT

SAMANTHA VOKES
CURRICULUM LEADER

UNIVERSITY DESTINATIONS

- Oxford Brookes University
- University of Bath
- Cardiff Metropolitan University
- University of Loughborough
- Southampton Solent University

INDUSTRY LINKS

- The Chelsea Football Club Foundation
- The Chartered Institute for the Management of Sport and Physical Activity (CIMSPA)
- Sport England
- UK Anti-Doping (UKAD)
- Andover Town Football Club

FACILITIES

- Indoor Sports Centre with modern spacious sports hall
- High quality fully equipped fitness suite and exercise studio
- High quality football pitches and training areas
- Modern gym equipment



I have played in the FA Premier League for Southampton WFC as a right back/centre back depending on the team's tactical system, so am very up-to-date with the professional game. I had a season in management when injured in 2016, managing Southampton Women's Reserves in an undefeated season and winning the side promotion to the Southern Regional Division.

SPORT

BTEC LEVEL 2 EXTENDED CERTIFICATE

ONE YEAR

This course covers the practical and theoretical aspects of sport and provides the opportunity to progress on to our different Level 3 courses, or directly on to employment, as well as enjoying all the industry standard facilities of our state-of-the-art Sports Centre.

WHAT WILL I LEARN

Whilst studying on this course you will learn the underpinning knowledge of anatomy and physiology, principles of fitness training and exercise programme writing along with performance analysis. You will explore concepts involved in sports psychology and apply different sports performance skills and technique in team and individual sports.

This course also has a unique addition of outdoor adventure activities subjects to include water and land-based sports from kayaking to climbing and mountain biking, community coaching projects and much more.

ENTRY REQUIREMENTS

Four GCSEs at grade 3, Maths and English at grade 3, Level 1 Diploma or equivalent at grade Merit.

WHAT CAN I STUDY NEXT?

- Sport, Fitness and Personal Training BTEC Level 3 National Extended Diploma
- Sports Coaching and Development BTEC Level 3 National Extended Diploma
- Sport and Outdoor Activities BTEC Level 3 National Extended Diploma
- Uniformed Protective Services BTEC Level 3 National Extended Diploma



CAREERS

- Leisure Assistant
- Sports Coaching
- Uniformed Protective Services
- Outdoor Activities Instructor
- Gym Instructor



SEE SPARSHOLT.AC.UK

for full list of topics covered, any optional additional qualifications and much more.

SPORT, FITNESS AND PERSONAL TRAINING

BTEC LEVEL 3 NATIONAL EXTENDED DIPLOMA

TWO YEARS

Taught in our state-of-the-art Sports Centre by dedicated industry professionals, you will gain a detailed knowledge of the sports and fitness industry. This course has been developed in line with the CIMSPA standard of Gym Instructor and Personal Trainer. This means you will leave us employment ready to take on the fitness industry.

WHAT WILL I LEARN

The subjects allow you to develop technical skills in working with clients in a gym environment, carrying out gym inductions and leading small-group-based exercise, supported by underpinning knowledge of the body and specific populations.

You will work with talented athletes training on our other sports programmes, devising fitness programmes, advising on injuries, nutrition, and performance enhancement techniques to develop your knowledge of real clients when working in industry situations, and you will also have the opportunity to take part in trips. The course involves a mix of theory and practice relating to sport, fitness, leisure and personal training. You will also benefit from work experience, visits to local fitness centres and guest speakers, as well as the opportunity to run your own sporting events. This qualification also offers UCAS tariff points for those aspiring to go on to a degree course. This course gives you UCAS tariff points towards entry to University.

ENTRY REQUIREMENTS

Five GCSEs at grade 4 including Maths and English or Level 2 Diploma at Merit Level plus GCSE or Functional Skills Level 2 or above in English and Maths.



SEE SPARSHOLT.AC.UK

for full list of topics covered, any optional additional qualifications and much more.

WHAT CAN I STUDY NEXT?

Study at University at FdSc or BA/BSc (Hons) level.

Popular degree choices:

- Sports Rehabilitation
- Strength and Conditioning
- Exercise and Fitness Management
- Applied Sports Science
- Nutrition and Exercise Science



CAREERS

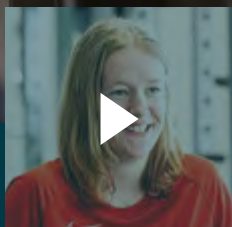
- Gym Instructor/ Personal Trainer
- Sports Physiologist
- Exercise Class Instructor
- Sports Therapy
- Strength and Conditioning Coach
- Sports Rehabilitation



FITNESS PATHWAY

An added extra of studying on the Sport, Fitness and Personal Training level 3 course is that you become part of our Fitness Programme where you will receive a wider range of fitness industry experiences. Our industry expert, Jo Todd, will lead you through a catalogue of fitness training practices to include:

- CrossFit
- Les Mills Fitness Classes
- Circuits
- Step
- Indoor cycling
- Kettle bells
- Boogie bounce and much more



VIDEO REEL

Sparsholt student April talking about her experience.

SPORTS COACHING AND DEVELOPMENT

BTEC LEVEL 3 NATIONAL EXTENDED DIPLOMA

TWO YEARS

This is a career-focused qualification with industry endorsement and accreditation. It enables you to develop underpinning knowledge, to gain experience as a coach and to build skills to impact positively on sports development programmes.

WHAT WILL I LEARN

The qualification is endorsed by the Chartered Institute for the Management of Sport and Physical Activity (CIMSPA), who have confirmed that the qualification is fully mapped to its professional standards of 'Coach' and 'Safeguarding and Protecting Children'. Taught in our state-of-the-art Sports Centre by dedicated industry professionals, you will gain a detailed knowledge of the sports and recreation industry.

On completion of this course each learner will become a qualified sports coach and will have mastered specific skills in improving a participant's experience of sport and physical activity by providing specialised support and guidance aligned to their individual needs.

You will learn how to lead the planning, preparation, delivery, continuous evaluation and review of a series of sport and/or physical activity sessions. The course involves a mix of theory and practice relating to sport, coaching and development. You will also benefit from work experience, visits to local sport and recreation centres and guest speakers, as well as the opportunity to run your own sporting events. This course gives you UCAS tariff points towards entry to University.

ENTRY REQUIREMENTS

Five GCSEs at grade 4 including Maths or English or Level 2 Diploma at Merit Level plus GCSE or Functional Skills Level 2 or above in English and Maths.

WHAT CAN I STUDY NEXT?

Study at University at FdSc or BA/BSc (Hons) level.

Popular degree choices:

- Sports, Coaching and Physical Education
- Football Studies
- Performance Analysis
- Sport and Exercise Psychology
- Sport and Exercise Science
- Sports Strength and Conditioning



SEE SPARSHOLT.AC.UK

for full list of topics covered, any optional additional qualifications and much more.



CAREERS

- Semi-Professional football
- Careers in Coaching
- University
- Scholarships in USA
- Employment in the Sports and Leisure Industry
- Sports Development
- Health Practitioner



MY FUTURE IN FOCUS

I really enjoy the practical skills that we learn. We do circuits, spinning classes, stretching and learning all the techniques that we'll need to be a personal trainer.

The lecturers are really friendly here – you can go to them whenever you need any help. They're really approachable and help give you the skills that you need to get a qualification that you want as a job.

APRIL
SPORT STUDENT



FOUNDATION



SPARSHOLT COLLEGE FOOTBALL ACADEMY

Sparsholt College Football Academy has collaborated with the Chelsea Football Club Foundation – the charitable arm of Chelsea Football Club that empowers communities and individuals to achieve their goals through football.

Our esteemed Academy invites talented football players, throughout the UK and overseas, to be a part of a fantastic football programme, alongside their studies on a leading Sports course.

Across the Girls' and Boys' Football Academies, students on our programme will have a wealth of opportunities to progress their career within this ever-growing industry, in association with one of the country's leading Charitable programmes.

BOYS' FOOTBALL ACADEMY PATHWAY

An added extra of studying the Sports courses with us is that you become part of our respected Sparsholt College Football Academy Programme. We recognise that players develop at different times and as a result have a tiered programme for players of all abilities. Our coaches regularly evaluate performance, giving a target to improve individual performance and move into the next tier.

All players will train at least two/three times per week and also play in a comprehensive match programme. Our teams compete in the following leagues and competitions: National Football Youth League under 19's, National League Youth Alliance, Hampshire Colleges' Football League, FA Youth Cup, Hants Midweek Floodlit Cup and English Colleges' Cup.



CHELSEA FC FOUNDATION: SPARSHOLT SQUAD – BOYS

This new exciting association brings a new wealth of opportunities, including:

- Represent CFCF: Sparsholt in the Chelsea FC Cobham Cup, held annually at the Chelsea FC Training complex in Cobham
- Take part in training sessions held at the Chelsea FC Training Complex in Cobham
- Access to CFC Academy fixtures throughout the season
- Opportunities to visit the Chelsea FC Stamford Bridge Stadium
- Take their first steps in Coach Education courses delivered by the FA
- Players qualified to a minimum FA Level 1 coaching in football standard during their time at the college will be able to access the CFCF Employment pathway
- Players employed by Chelsea FC will have the opportunity to build their coaching experience working, locally, nationally and internationally
- Trials with professional clubs arranged for players of suited level
- England Schoolboys trials available – Sparsholt has a proud record of six players making the ESFA schoolboy squad in five years



GIRLS' FOOTBALL ACADEMY PATHWAY

An added extra of studying a Sports course with us, you'll become part of our Girls' Football Academy. We work closely with a number of local football clubs to ensure your progression up the football leagues, with the opportunity to play in the Association of Colleges' Ladies' Futsal League and the Super 7s College League.

The Academy also boasts links to American universities where scholarships can be offered for players seeking international playing experiences. Training will focus around our playing style and philosophy, technique and skills application, performance video analysis and strength and conditioning training – all at our state-of-the-art Sports Centre.

CHELSEA FC FOUNDATION: SPARSHOLT SQUAD – GIRLS

This new exciting association brings a new wealth of opportunities, including:

- Train 2/3 times a week
- Play competitive fixtures Wednesdays
- Opportunity to play in the National Football Youth League
- Compete in the National Futsal League
- Represent CFCF: Sparsholt Women's Football Academy in national competitions
- Take part in training sessions held at the Chelsea FC Training Complex in Cobham
- Access to CFC Women's 1st team fixtures throughout the season
- Opportunities to visit Chelsea FC's Stamford Bridge Stadium
- Take their first steps in Coach Education courses delivered by the FA
- Players qualified to a minimum FA Level 1 coaching in football standard during their time at the college will be able to access the CFCF Employment pathway
- Players employed by Chelsea FC will have the opportunity to build their coaching experience working, locally, nationally and internationally
- All academy players will be issued with CFC Training kit and match wear

DEVELOPMENT SQUAD

Sparsholt College's Development Squad is for talented young footballers aged 16–19 to develop their footballing potential alongside gaining national qualifications in sport at Levels 1–3. Players in the Development Squad have the opportunity to play in the National League Youth Alliance.

COLLEGE FIRST TEAM

This programme allows players to train in a high quality, competitive environment and play at the highest level of college football in Hampshire. There are opportunities for players to progress into the Sparsholt Development Squad and to attach to external clubs for weekend football to develop further.

COLLEGE SECOND TEAM

Most of our College Second Team will take part in college football as well as gaining all the benefits of a full-time training environment.

ANDOVER TOWN FOOTBALL CLUB

The ATFC team currently play in Wessex League Division One, and players from the Sparsholt and Andover College teams can transition into the Under-23 squad which links to first team opportunities as player progression allows, giving a fantastic pathway for players to develop.



For international students, full FA/FIFA international clearance will be required prior to playing in FA-registered Matches.



UNIFORMED PROTECTIVE SERVICES





Committed to a uniformed protective services career? So are we! On our career-focused courses you'll be getting prepared for your future in this exciting industry with a wide range of practical learning experiences using our modern facilities and equipment, whilst learning the theoretical knowledge needed from our expert tutors.

Our strong relationships with employers in the industry will give you an edge when it comes to finding your dream job in the sector.

PUBLIC SERVICES BTEC LEVEL 2

UNIFORMED PROTECTIVE SERVICES BTEC LEVEL 3



CAREERS

- Emergency services
- Armed forces
- Third sector roles
- Prison service
- Security services



SEE SPARSHOLT.AC.UK

for full information on courses, facilities and much more.

UNIVERSITY DESTINATIONS

- Oxford Brookes University
- University of Bath
- Cardiff Metropolitan University
- University of Loughborough
- Southampton Solent University

INDUSTRY LINKS

- Armed Forces
- Emergency Services
- Hampshire Constabulary
- Hampshire Fire and Rescue

FACILITIES

- Indoor Sports Centre
- Large purpose-built indoor climbing wall
- High quality fully equipped fitness suite and exercise studio
- Low ropes course for leadership training and instruction
- Exclusive access to on-site and local lakes for kayaking and canoeing

COMBINED CADET FORCE (CCF)

We are excited to announce as part of our Uniformed Services Programmes, we now offer the Combined Cadet Force (CCF) programme. We have formed a partnership with Winchester College (Army Division), so our students can gain invaluable experience about military life, before they go onto their chosen service.



PUBLIC SERVICES

BTEC LEVEL 2

ONE YEAR

This new and exciting BTEC course covers the practical and theoretical aspects of the Uniformed Public Services and provides the opportunity to progress on to our different Level 3 courses, or directly on to employment, as well as enjoying all the industry standard facilities of our state-of-the-art Sports Centre, including our climbing wall.

WHAT WILL I LEARN

You will learn the underpinning knowledge of the different roles and work of the public services. This course boasts fantastic enrichment opportunities, with visits to local blue light and military services.

You will also experience physical preparation for entry requirements into the different public services as well as full access to the on-site gym to ensure your health, wellbeing and personal fitness is maintained.

ENTRY REQUIREMENTS

Four GCSEs at grade 3, Maths and English at grade 3, Level 1 Diploma or equivalent at grade Merit.

WHAT CAN I STUDY NEXT?

- Sport, Fitness and Personal Training BTEC Level 3 National Extended Diploma
- Sport and Outdoor Activities BTEC Level 3 National Extended Diploma
- Uniformed Protective Services BTEC Level 3 National Extended Diploma



CAREERS

- Uniformed Protective Services



SEE SPARSHOLT.AC.UK

for full list of topics covered, any optional additional qualifications and much more.

UNIFORMED PROTECTIVE SERVICES

BTEC LEVEL 3 NATIONAL EXTENDED DIPLOMA

TWO YEARS

This course will effectively prepare you for application and career success in the Uniformed Protective Services. You will increase your knowledge, skills, level of fitness and discipline ready for a career in the uniformed protective services or the private sector.

WHAT WILL I LEARN

This course encompasses a range of outdoor and adventurous activities and sports based units, as well as a wide variety of protective services subjects. You will be involved in, and exposed to, a range of activities that will support your development and progression to employment or Higher Education, including extracurricular trips to Bournemouth Airport Training Facility for anti-terrorist combat training, as well as meeting a variety of Protective Service employees to aid you in successful application to your chosen service.

The course involves a mix of theory, exams and practices relating to different uniformed protective services. You will also benefit from visits to local fire stations, 999 call centres and police training events along with guest speakers. This qualification offers UCAS tariff points for those aspiring to go on to a degree course.

ENTRY REQUIREMENTS

Five GCSEs including Maths and English at grade 4 or Level 2 at Merit level plus GCSE or Functional Skills Level 2 in English and Maths.

WHAT CAN I STUDY NEXT?

- Degree (BSc) or Foundation Degree (FdSc) courses
- BSc Police Studies
- BSc Criminology/Forensics
- Officer Training in the Armed Forces
- Enlistment into the Uniformed Protective Services
- This course gives you UCAS tariff points towards entry to University



SEE SPARSHOLT.AC.UK

for full list of topics covered, any optional additional qualifications and much more.



CAREERS

- Fire and Rescue Service
- Armed Forces
(British Army/Royal
Navy/Royal Air Force)
- HM Prison Service
- Customs/Border Control
- Rescue Services
- Policing
- Criminology

MONEY MATTERS

COURSE FEES

UNDER 19?

No tuition fees! If you're under 19 on 31 August in the year you start your course and are a UK resident, you won't need to pay tuition fees or examination fees for your course. Depending on your household income, you may also be able to get help towards travel, accommodation, essential equipment or childcare costs. See our Financial Support section on page 158 for more details.

OVER 19? LOOKING TO STUDY AT LEVEL 2 OR BELOW?

Fees usually apply, but you may be eligible for free tuition, depending on the course you want to study, your existing qualifications and your financial circumstances – please contact us for more information on **01962 797280**.

LOOKING TO STUDY AT LEVEL 3?

Get ahead with an Advanced Learner Loan. Loan eligibility doesn't depend on your income, there are no upfront fees or credit checks.



INTERNATIONAL STUDENTS

TUITION FEES MAY APPLY STUDENT VISA MAY BE REQUIRED

If you have not been normally resident in the UK for three years before the start of your course of studies, you will need to pay international fees. Sparsholt College Hampshire is on the UK government's Register of Education and Training Providers and has Highly Trusted Sponsor status. Our Sponsor Licence Number (SLN) is G0J84DCF3.

For information about visa requirements and international study at Sparsholt visit **sparsholt.ac.uk/international** or email **international@sparsholt.ac.uk**

EXTRA-CURRICULAR ACTIVITIES PAYMENT

This payment contributes towards the many extra-curricular activities offered by the College and is payable by all students, whether paying tuition and examination fees or not. As a guide, the payment for 2019–20 was £89. A one-off higher payment of approximately £300 applies to our Outdoor Adventure course due to the nature of their course activities, which include trips and expeditions to North Wales, South Wales and Dartmoor, using our fleet of canoes, kayaks and mountain bikes.

PAYMENT OF FEES

Fees are payable at or before enrolment, or through our interest free instalment plan. To find out more call **01962 797280**.

REFUNDS

In normal circumstances, you will not be eligible for a refund of your fees if you withdraw from your course before you complete it. If payment is made by instalments, any outstanding amounts will continue to be taken.

TALK TO US FIRST

If you are experiencing financial difficulty that may force you to withdraw your application to your chosen course please discuss your situation with the Student Funding team before making any decisions, call **01962 797267**.



All course information is correct at time of print. However, changes may take place throughout the year and the website will hold the most up-to-date information. The College reserves the right to change or amend a course as necessary. If you require this guide in an alternative format, please contact us.

FINANCIAL SUPPORT

There is a range of funding available to help you attend college. After applying for your course, you can apply for funding as part of your registration process. We will ask about your household income – including all forms of benefits except Disability Living Allowance, PIP or Child Benefit – and ask you to supply supporting documents such as P60s, wage slips, tax credit notices or self-assessment accounts.

For further information please see below or contact our Student Funding team on **01962 797267** or **student.funding@sparsholt.ac.uk**

RESIDENTIAL BURSARY

This helps towards accommodation costs for students who need to live on-site because they are not on a travel route. If eligible, your accommodation costs will be reduced by the amount of funding awarded to you.* You can also pay the remaining balance in monthly instalments.

Generally, to qualify, you need to be living in college accommodation or have moved into rented accommodation in the area in order to study with us. There must not be similar local provision within 15 miles of your home.

*For example, if you are a 16 year old and your household income is under £35,000, you could receive a discount of up to £4,000 on accommodation costs – or up to £4,500 if your household income is under £25,000.

FREE COLLEGE MEALS

If you're aged 16–18 (or 19–24 and with a Learning Difficulty Assessment and Education, Health and Care Plan) and you or your parents already receive certain benefits, you could also be eligible for free college meals.

To check your eligibility and find out more, please visit Hampshire County Council's website: **hants.gov.uk/educationandlearning/freeschoolmeals/furthereducation**

16–18 BURSARY FUND

If you're 16–18 and in care, a care leaver, or are in receipt of Income Support and support yourself or any dependents financially, or receive both Employment Support Allowance (ESA) and Disability Living Allowance (DLA), you may be eligible for a bursary of up to £1,200 to help you meet the costs of coming to college.



CHILDCARE SUPPORT

If you're under 20 and have a child you may be eligible for help with Ofsted-registered childcare and some other college-related costs through the Care to Learn scheme. Further details can be found at [direct.gov.uk/caretolearn](https://www.direct.gov.uk/caretolearn) or from the National Careers Service. If you're 20 or over and have a household income of less than £35,000 childcare support may be available from the College's Support to Study Funds mentioned below.

SUPPORT TO STUDY BURSARY

We provide a discretionary fund for learners that do not meet the criteria for the 16–18 Bursary Fund or are aged over 19. If your household income is under £35,000 the College's Support to Study Bursary may be able to help with the costs of travel, books, equipment or any other cost which may make it difficult for you to attend college.

You could receive up to 100% off transport costs, as well as being able to pay the remaining balance on a monthly basis. If your household income is under £25,000 you may be eligible for the transport cost to be fully covered by the fund. The income threshold of £35,000 is increased by £1,650 for each dependent child living in the same house as the bursary applicant.

Please note: Financial limits may be subject to change by Student Finance England and/or the College Group.



GET AHEAD WITH AN ADVANCED LEARNER LOAN

➤ DEVELOP YOUR SKILLS

➤ NO UPFRONT FEES

➤ IMPROVE YOUR CAREER OPTIONS

If you are 19 or over and thinking of improving your career options you can cover the cost of tuition fees with an Advanced Learner Loan. Repayments don't begin until you finish the course and are earning at least £25,000.

This loan can fund many Level 3 and 4 courses, including Access courses, Diplomas, Extended Diplomas and Advanced and Higher Apprenticeships. Loan eligibility doesn't depend on your income, there are no upfront fees or credit checks. What's more, if you complete an Access to HE Diploma and then go on to complete a degree you will have your Advanced Learner Loan written off.

WHERE CAN I FIND OUT MORE?

Visit [sparsholt.ac.uk](https://www.sparsholt.ac.uk) and search Advanced Learner Loans or call **01962 797280**.

HOW DO I APPLY?

Apply to college as normal. Once you receive an offer letter complete a loan application at: [gov.uk/advanced-learner-loan](https://www.gov.uk/advanced-learner-loan)





HOW TO FIND US

TRANSPORT

Students travel to Sparsholt from across the region, so we aim to make the journey as easy and cost effective as possible. We'll help you find the best way to get into College, whether you're getting the train from Southampton, Eastleigh, Totton, Basingstoke or Portsmouth or the bus from across Hampshire and the county borders.

If you live further away, find out about our Ofsted 'Outstanding' accommodation and residential bursaries – see more information on page 158.

CAMPUS BUS TRAVEL

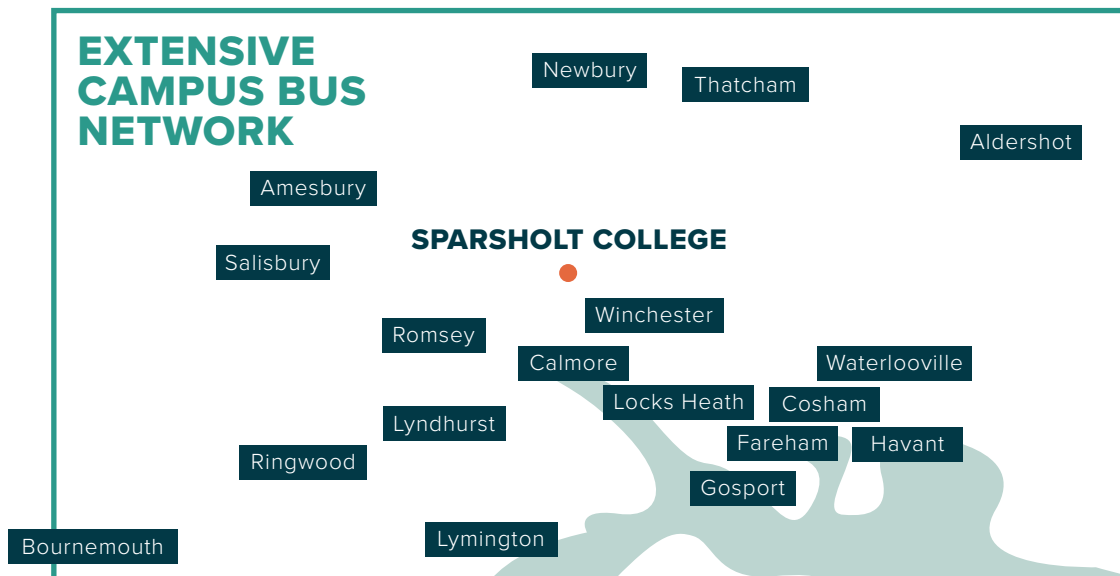
We offer a range of options including Campus Bus Travel, our private fleet of buses that will pick up from the areas below. For those not on the campus bus routes, there are public transport options with train and connecting buses straight to campus. Payment for train/bus passes can be spread over nine months by card instalments at no extra cost. An initial deposit payment is required on application.

If you need further information please contact our Transport team on **01962 797346** transport@sparsholt.ac.uk or visit sparsholt.ac.uk/the-college/transport

There is parking on campus for registered vehicles.

EXTENSIVE CAMPUS BUS NETWORK

SPARSHOLT COLLEGE



A detailed map of the Sparsholt Campus area. The map shows a network of roads including the A30, A31, A34, A303, A3057, A27, A3090, B3400, B3048, B3420, B3049, B3420, B3404, B3047, B3335, and A342. Key locations marked include Andover, Basingstoke, Winchester, Sparsholt, Romsey, Stockbridge, and various villages like Popham, Micheldever, and Twyford. The Sparsholt Campus is highlighted in a green box. The map also shows the M3 motorway and the A12 road. The background is a dark blue color with white lines for roads and green areas for parks or open spaces.

Don't forget that the College may be able to offer free or reduced cost travel!

OUR OPEN EVENTS

Saturday 7 October 2023

Saturday 11 November 2023

Saturday 3 February 2024

Saturday 2 March 2024

Wednesday 1 May 2024

Thursday 13 June 2024



**SCAN HERE
TO BOOK!**

SPARSHOLT CAMPUS

Sparsholt, Winchester
Hampshire SO21 2NF

01962 776441

Sparsholt.ac.uk

SPARSHOLT
COLLEGE GROUP



MIX
Paper | Supporting
responsible forestry
FSC® C008152