



# CULTIVATING **THE EXCEPTIONAL**

2025 UNDERGRADUATE AND  
POSTGRADUATE COURSES

**SPARSHOLT**  
COLLEGE GROUP

A portrait of Julie Milburn, a woman with long brown hair, smiling. She is wearing a dark blue blazer over a dark top and a blue lanyard with colorful beads. The background is a blurred outdoor setting with greenery and a building. A white wavy line graphic is overlaid on the image, framing the top and right sides.

**JULIE  
MILBURN**

PRINCIPAL  
AND CHIEF  
EXECUTIVE

# WELCOME TO UNIVERSITY CENTRE SPARSHOLT

I am delighted you are considering Sparsholt as your classroom in the countryside. It's an excellent choice – this year we are celebrating 125 years of educating students, a heritage we are certainly proud of.

As part of the Sparsholt College Group, University Centre Sparsholt (UCS) offers a truly diverse and exciting range of courses which can take your higher education journey to the next level. Higher Education students starting at University Centre Sparsholt this coming year will be able to look forward to being taught in our new £5 million Higher Education Science Centre which will be exclusively for the use of students studying degree courses.

We really care about our environment and we are well on our journey towards a carbon neutral campus with exciting plans to develop this through our Green Agenda. Sustainability is a central theme to our research-informed teaching, with our lecturers actively contributing towards research in areas including aquaculture,

animal husbandry, equine welfare and ecology as well as sustainable agriculture.

To further support our research we are excited to welcome a new vertical farming facility along with a new robotic dairy and agritech centre to add to the wide range of green technology already available at Sparsholt.

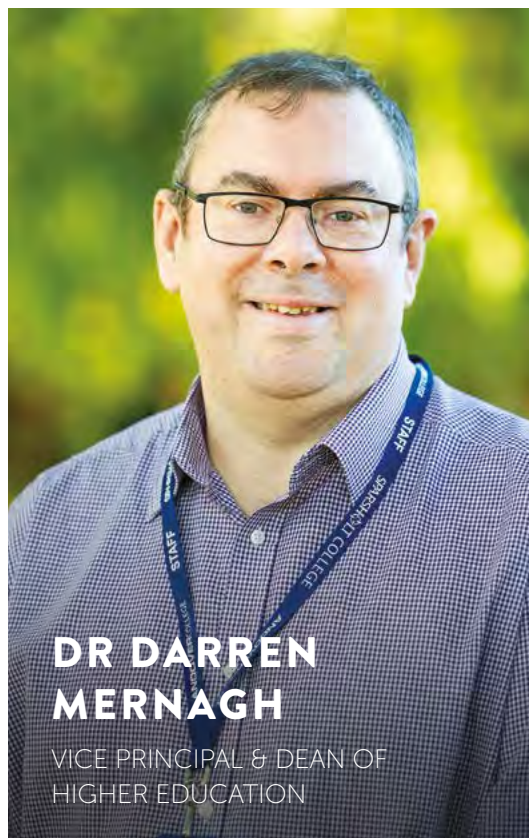
As the world changes, so do the ways we teach and the courses we offer. Sparsholt remains at the forefront of education, ensuring that you're prepared for the future job market. With your passion and dedication combined, we're cultivating a collective future where your ambitions can thrive, your potential is realised, and together, we contribute to a more sustainable world.

Thank you for taking the time to explore the degree courses that we offer at University Centre Sparsholt. Set in 183 hectares of rolling Hampshire countryside on the edge of Winchester, our campus is arguably one of the most beautiful places to study in the UK, with the vibrant cities of Southampton and Portsmouth also within easy distance.

Studying for a vocational degree in a subject area that excites you is a great way to develop your skills and knowledge. Here at UCS we only employ staff who have wide-ranging industry experience and who share the same passion for their subject area as you do. Our lecturers, in addition to extensive industry knowledge and contacts, all have teaching qualifications – ensuring that the quality of what we teach, as well as how we deliver it, is first class.

Our supportive HE team will take the time to get to know you on first name terms and make themselves available for queries and support when they are not teaching. Add to that the support available from our HE Study Support, Wellbeing, Library and Residential teams and your UCS experience will be personal and fulfilling, providing the perfect environment in which to grow both in your discipline and as an individual.

We could not be prouder of our outstanding facilities and what we offer at UCS. We very much look forward to supporting you in taking the next step in your education and to welcoming you to our campus soon.






# EXCELLENT CAREER CONNECTIONS

PUTTING THEORY INTO PRACTICE

STUDENTS HAVE RATED THE  
TEACHING ON MANY OF  
OUR COURSES AS AMONG  
**THE BEST IN THE COUNTRY**

NSS 2023



# TOP QUALITY TEACHING AND LEARNING

Your lecturers are experts in their fields, with the latest insights and extensive connections with employers and industry leaders. At UCS you will undertake innovative and challenging research projects as part of your degree, as well as putting your learning into practice on exciting industry placements.

Our graduates have great employment rates, securing dream jobs such as veterinary nurse, ecological consultant, zoo education officer, behavioural research officer at an animal welfare charity, conservation project officer and researcher at key conservation organisations, fisheries enforcement officer, fish health inspector, equine welfare scientist and international events marketing manager – to name a few!

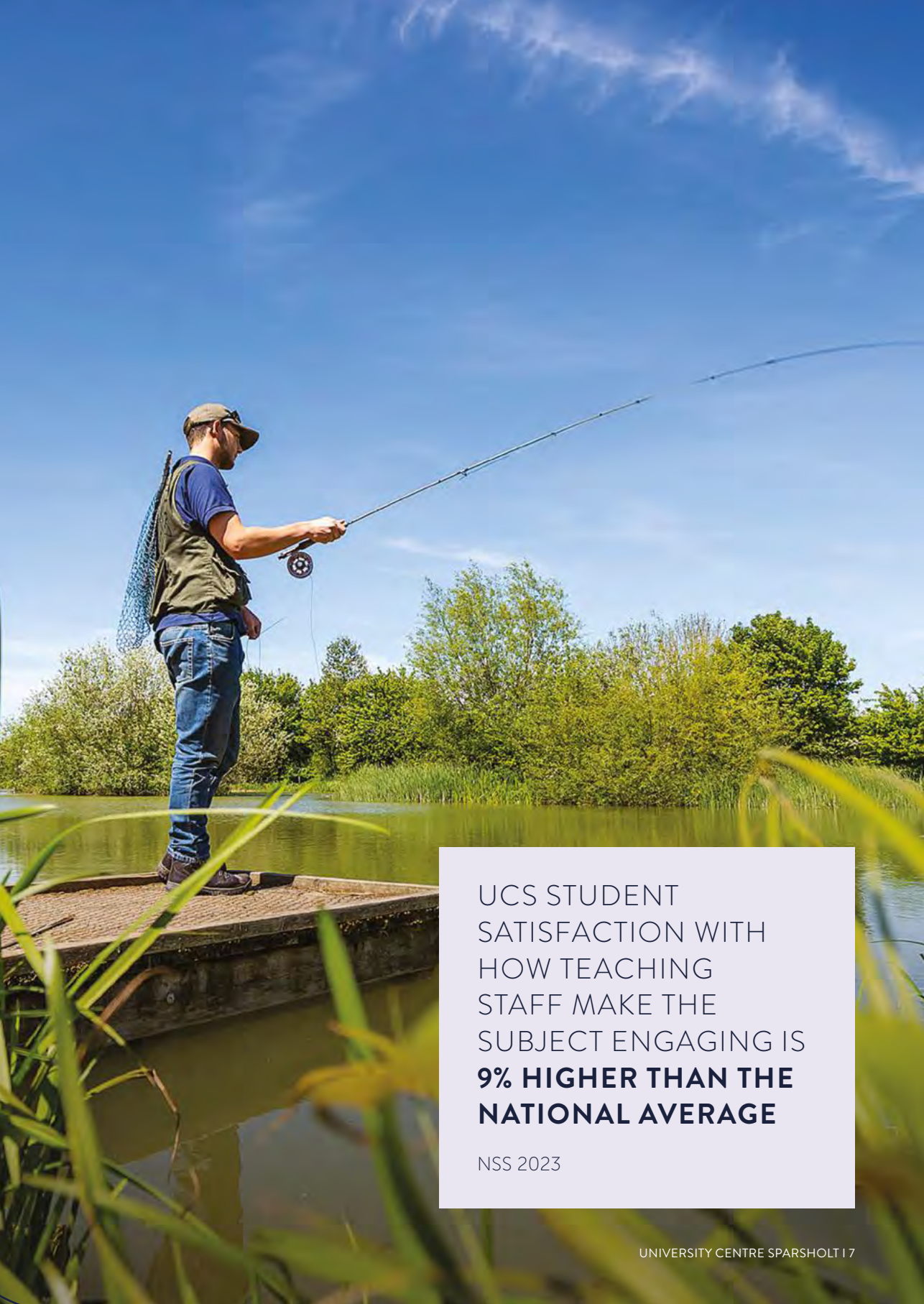
# OUTSTANDING FACILITIES

Set in the beautiful Hampshire countryside, our large and attractive campus has an array of specialist facilities designed to enhance your learning and provide you with industry-standard experience.

Our campus has diverse on-site habitats and industry-standard training areas such as the unique Aquatic Research and Conservation Centre which will both inspire and support your learning.

Our facilities are second to none, including our state-of-the-art Rider Performance Studio, with Racewood Eventing Simulator as well as the Animal Health and Welfare Research Centre, opened by HRH The Princess Royal and home to The National Zoo Academy.





UCS STUDENT  
SATISFACTION WITH  
HOW TEACHING  
STAFF MAKE THE  
SUBJECT ENGAGING IS  
**9% HIGHER THAN THE  
NATIONAL AVERAGE**

NSS 2023

£5 MILLION  
**INVESTED  
IN NEW  
FACILITIES  
FOR 2025**



An aerial photograph of the University Centre Sparsholt campus, showing various buildings, parking areas, and surrounding green fields under a blue sky with scattered clouds. The text is overlaid on a white rectangular background.

# YOUR LEARNING LANDSCAPE

## OUR NEXT BIG PROJECT

Higher Education students starting at University Centre Sparsholt this coming year will be able to look forward to a new £5 million dedicated Higher Education Science Centre which will be exclusively for the use of our students studying degrees up to PhD.

The new building due to open November 2024 will provide a modern and fit for purpose learning environment built upon sustainable values; incorporating green technologies and improving environmental protection, both integral components of the degree courses we will deliver from this building. HE students will be able to take advantage of new laboratories and specialist teaching facilities along with a new social learning space.

The campus is also welcoming a new Vertical Farming Facility to add to the wide range of technology available at Sparsholt. The vertical farming unit is expected to be of particular interest to those interested in researching sustainable agriculture and ecology at all levels including research degrees.

This new addition to UCS, along with our new agritech labs, will continue to extend the specialist facilities already on offer which showcase how sustainable working methods can be successfully integrated into training and the workplace, ensuring graduates are fully prepared for the ever-changing global employment landscape.

This investment follows on from the creation of the Animal Health and Welfare Research Centre, opened by HRH The Princess Royal in late 2022, which was the result of a further £2.5 million in investment in facilities supported by Enterprise M3, the Local Enterprise Partnership.

# TRIPS, RESEARCH AND NEW OPPORTUNITIES

## STUDENT VIEW



**Thanks to the Farming and Wildlife Advisory Group,** Matthew Norris-Hill and Blandy's farm for hosting a visit for BSc Agriculture degree students to view cover crop trials. #IntegratedFarmManagement #CatchmentSensitiveFarming



**What better way to kick off the start of term than with a staff vs students rounders match down on the Campus sports fields!** 🏏 It was great to enjoy the fresh air, exercise and of course encourage some friendly competition between both teams.



**Congratulations to UCS student** Casey for a double win at the BIAZA Photo Competition 2023! Casey clinched two prestigious awards for her stunning photos of nettle jellyfish and a female monitor lizard.



**First-year FdSc and BSc Animal students and third-year FdSc Zoo students have attended the Longleat Wildlife Conservation Student Conference.** 😊 The students thoroughly enjoyed the opportunity, and it was great to see them engage with the keepers and researchers regarding work experience and the projects that were discussed. Students were even able to explore the Longleat Estate after the conference finished!



**Our Wildlife Ecology & Conservation Degree Students, lecturers and Dean of Higher Education** had a brilliant time attending the #HampshireHedges launch event! 🌳🌳🌳 A huge thank you, CPRE Hampshire, the countryside charity for having the UCS students along and congratulations on the launch of such a fantastic project for the Hampshire Countryside.



**Congratulations to BSc (Hons) Applied Animal Behaviour Alumni, Francesca** who has had their research published in the Veterinary Nursing Journal! 🌟 'The potential barriers to the treatment and management of feline behaviour problems, particularly cognitive dysfunction syndrome, in ageing domestic cats' can be found on page 14 of the latest issue.

# VITAL INDUSTRY EXPOSURE

## THE WORK-READY UNIVERSITY

University Centre Sparsholt students get many opportunities to put their skills into practice, including working with new technology, industry networking and visiting interesting places.

Our social media channels are a great place to keep up to date with all the exciting new events and view the great photos from our students themselves.

**Follow our social channels to see more.**



@UniCentreSparsholt



@UC\_Sparsholt



@UC\_Sparsholt



@UC\_Sparsholt



**FdSc Veterinary Nursing Science and Veterinary Nursing Diploma students had a fantastic time at the London Vet Show 2023!** 🌟 It was a great opportunity for our students to network and learn more about cutting-edge advancements in the industry.



**Make sure to catch 'Secrets of the Aquarium' tonight on BBC2 at 8pm.** We're so excited to see Sparsholt graduates excelling in their chosen field! Congratulations to Marcus and his team, who will be featured in a new documentary series on the National Marine Aquarium.



**Congratulations to UCS student, Annalise!** Annalise has won the LANTRA 'Learner of the Year Award' in the 'Equine and Farriery' category. 🏆 Annalise was selected as a finalist, along with two others from Sparsholt College, for the prestigious, first-ever, Land-based & Environment Learner Awards 2023.

# LEARN FROM **THE EXPERTS**

## **EXCELLENT TUTOR TO STUDENT COMMUNICATION**

Small class sizes mean individual attention because you're more than just a number. You'll have our individual attention and support.

At UCS you're not just another student in a lecture theatre. You will have great access to expert lecturers, visiting speakers and our excellent links with industry.

Students of all backgrounds will feel at home in our inclusive learning environment. We have a study coach system where senior students have regular timetabled sessions with first year students to help and guide them through the first year of study.

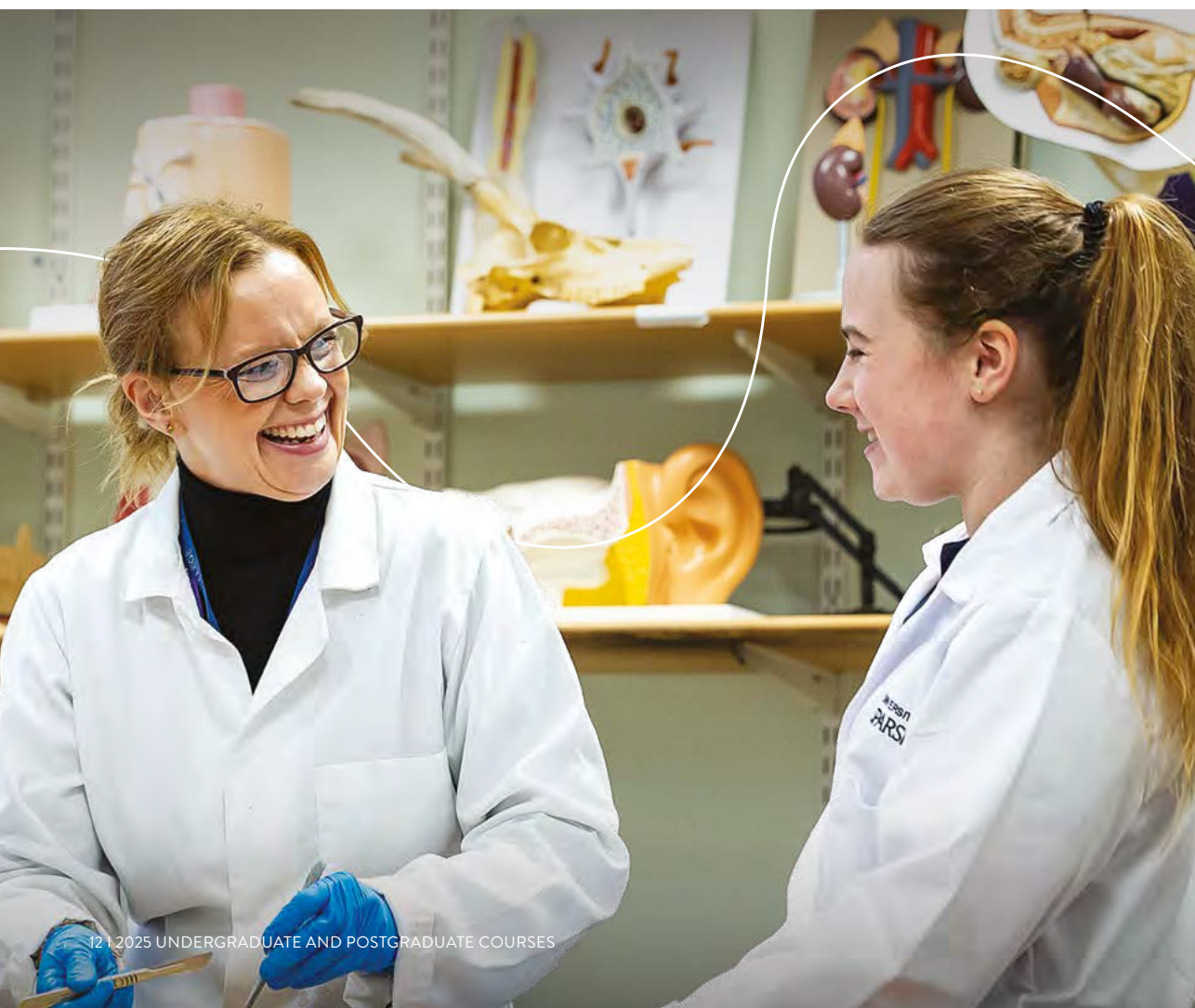
If you would like to find out more, you can also speak to our staff and students at any time on our website via Unibuddy!



**UNIBUDDY**



GET IN TOUCH WITH OUR  
UCS LECTURERS AND  
STUDENT AMBASSADORS



# CLUBS & SOCIETIES

Whether you live onsite or travel in daily, there's always something going on to get involved in.

## CAMPUS EVENTS

Our team organise a wide range of social events and activities throughout the year for both residential and non-residential students, including:

- Staff and Student rounders match in the first week of term
- Freshers Fayre
- UCS Student Christmas Quiz
- Charity events such as karaoke, foam parties, bar bingo, quizzes, pool or darts competitions
- End-of-year summer BBQ and sports day.

Clubs and Societies running currently:

- Fishing
- Motor Sports
- Invertebrate
- Photography
- Fish Geeks
- Spectrum.



- Queer Corner
- Dungeons and Dragons
- Board Games
- The Wellness Café
- Football
- Opportunities to complete a one day emergency first aid course.

Students are welcome to set up their own club, society or event and will be supported by our Senior Curriculum Leader to help start up, organise, and advertise your idea!



# OUTSTANDING FACILITIES FOR **INNOVATIVE RESEARCH**

**RELEVANT AND RESPECTED**



# SHAPING NEW THINKING

Experience the importance and impact research can have.

At UCS you can use our extensive facilities to carry out innovative research as part of your course and stand out against the competition when you graduate.

Previous students have published and presented to industry on diverse research projects, such as:

- The influence of menstruation on the performance of the rider
- The impact of scent enrichment on the behaviour of reptiles
- Cooperative care doesn't scare – impact of choice and control on stress levels in dogs during routine nail clipping – Presented at the ISAE Benelux Conference 2022
- An analysis of zoo-housed koala (*Phascolarctos cinereus*) diet in the UK, presented Jan 2023 at EAZA nutrition
- How do different genres of music affect the milk yield of dairy ewes?



# OPPORTUNITIES ON YOUR DOORSTEP



## A THRIVING COMMUNITY

You can live on-site close to facilities, or in University of Winchester accommodation or student houses in this friendly and beautiful city.

Home to historic Winchester Cathedral and the world-famous Christmas market, Winchester also offers lots of thriving bars and restaurants to cater for all tastes and budgets. Popular city activities include ghost walks, cinema trips and escape rooms!

All UCS students can also attend University of Winchester Student Union social evening events at their student bar, The Vault.



## LOCAL FESTIVALS, EVENTS AND LOCATIONS OF INTEREST

Hampshire is home to some of the largest festivals in the UK including Boomtown and Victorious Festival, as well as local attractions such as Marwell Zoo, Bombay Sapphire Distillery and the Hawk Conservancy Trust. Sports fans can also enjoy county cricket at the Utilita Bowl and football at St Mary's Stadium along with a range of other sports. The county is bursting with incredible events, scenery and two outstanding National Parks, the South Downs and the New Forest.

## SPARSHOLT HAS A FAMILY FEEL

As part of a close-knit community you can enjoy the convenience of our fully-equipped sports centre, restaurant, bar, café and library. Living in the Burma Road Halls in Winchester gives more of a city university experience with full and easy access to the university's facilities.

## 3 MILES FROM WINCHESTER

Live on-site or in this student-friendly city. Our countryside campus offers free car parking and is just three miles from Winchester and a short drive to the New Forest and the coast.



## UNIVERSITY OF PORTSMOUTH

All UCS students can also access student clubs and sporting facilities at the University of Portsmouth as well as the library and online resources.

## EASY TRANSPORT LINKS

Winchester benefits from great transport links via the train to London, Bournemouth and beyond! Don't forget Winchester is also less than 30 minutes away from Southampton Airport.

## EQUINE CENTRE

With Rider Performance Studio and Racewood Eventing Simulator, indoor and outdoor arenas, cross country trail, horse walker and extensive stabling.

## DAIRY UNIT

We're excited about the installation of our new Robotic Milking Parlour and that we've recently been part of a £6 million investment from the Government's Local Skills Improvement Fund Project. The project will see the development of a groundbreaking vertical growing environment at Sparsholt alongside other exciting opportunities for students to help prepare them for the technological advancements within the industry.

## 126 HECTARE FARM

Including dairy, sheep, pigs and arable enterprises.

## ONE HECTARE LAKE

Fed by spring water and well stocked with fish.

## SALMONID REARING

Nutrition trials centre.

## AQUATIC RESEARCH AND CONSERVATION CENTRE

Houses a range of exotic and warmwater aquatic species.

## SIKA DEER HERD

## SPORTS CENTRE

With a full size sports hall, climbing wall, gym, fitness suite and sprung-floor dance studio.

## STUDENT HALLS OF RESIDENCE

On site and in Burma Road, Winchester.

## VETERINARY NURSING TRAINING CENTRE

## CATERING

On site, we have a variety of different places to find refreshments. The main campus dining room is open for breakfast, lunch and dinner and our well-stocked shop is available to shop for student essentials. We also have a satellite Starbucks for students to enjoy before heading to our student bar with friends in the evenings.



# STEPS TO YOUR FUTURE

**UCS GRADUATES  
STAND OUT AGAINST THE  
COMPETITION – JOIN THEM!**

## 1. EXPLORE

Attend one or more of our Open Days to discover our 183-hectare campus and its facilities, knowledgeable staff and friendly students!

You can also speak to our staff and students at any time on our website via Unibuddy.



UNIBUDDY

## 2. SUBMIT YOUR APPLICATION

You can submit your application via one of the methods below:

### **FOR FULL-TIME UNDERGRADUATE COURSES**

FdSc | BSc and BSc Top-ups

Apply through UCAS online at [www.ucas.com](http://www.ucas.com)

Institution code: **S34**

### **FOR PART-TIME UNDERGRADUATE COURSES**

FdSc | BSc

### **ALL POSTGRADUATE COURSES**

MSc

Apply direct at [sparsholt.ac.uk/university-centre](http://sparsholt.ac.uk/university-centre)

### 3. ATTEND AN OFFER HOLDERS' DAY

If your application is successful we will invite you to an Offer Holders' Day to give you a taster of UCS life.

---

### 4. MAKE YOUR CHOICE

Once you make us your first choice, you can start planning to join us here at Sparsholt:

- Apply for Accommodation once registration opens
  - Apply for Student Finance and see if you are eligible for additional financial support
  - Chat to your lecturer or student ambassadors on our website's Unibuddy page before you arrive
  - Like us on Facebook or follow us on Instagram, TikTok and X to see what current students are getting up to.
- 

### 5. CONFIRM YOUR PLACE

Sparsholt will confirm your place when we receive your results. If your results are not as expected – don't panic!

For help and advice, contact our team on:

**[degrees@sparsholt.ac.uk](mailto:degrees@sparsholt.ac.uk)**

---

### 6. WE CAN'T WAIT TO MEET YOU!

During welcome week you will receive a welcome pack containing all you need to know about student life at Sparsholt.

#### SUPPORT WITH NEXT STEPS

Our Careers Team can help with job search, interview preparation or postgraduate study applications. Students progressing directly to a postgraduate course at UCS will also receive a 10% discount on course fees.



# MY UNIVERSITY CHECKLIST

Name	
Decision needed by	Open Event Date
Courses I want to know more about	
Course Title	
Questions to ask	
Course Title	
Questions to ask	
First Impressions	
Conclusion	
What else do I need to find out?	
Next steps:	
•	
•	
•	

This image shows a blank, lined notebook page. The page has horizontal ruling lines. On the right side, there is a vertical strip of four small photographs showing a landscape with fields and trees. At the bottom of the page, there is a line drawing of a hand holding a pen, with a line extending from the pen towards the right edge of the page.



# EXPLORE SPARSHOLT

Head to **[sparsholt.ac.uk/university-centre](https://sparsholt.ac.uk/university-centre)** to explore our 183-hectare countryside campus from the comfort of your own home through images, videos and interactive tours. Navigate through our virtual campus tour by scanning across the campus, zooming in and clicking on different areas to explore the wide variety of specialist buildings, equipment, and much more that Sparsholt has to offer!

## ANIMAL HEALTH AND WELFARE RESEARCH CENTRE

## SPECIALIST INDUSTRY STANDARD LABORATORIES AND EQUIPMENT

## LIBRARY

The Library offers specialist print and online resources, excellent IT facilities and knowledgeable staff who are on hand to support students with their studies. 24-hour access available for HE students, also home to our Careers Hub.

## COMING SOON TO UCS

£5 million new dedicated Higher Education facility.

## WELLBEING TEAM

The Wellbeing team is based in our support hub. Studying a subject that you're passionate about is exciting, but it can be daunting too. We know how important it is to stay focused on your studies but recognise that life can get in the way sometimes. If you are finding things difficult, it is important to know that you are not alone.

From self-help information on academic pressures and low self-esteem, to tips for wellbeing and mindfulness guides, we have gathered websites, apps, videos and more to help you take control.

Sometimes it helps to share your feelings and problems with someone else. If you are going through a tough time, you can contact us to make an appointment with one of our friendly practitioners.

Our aim is to help you keep on track with your studies and signpost you on to more relevant services as needed. Sparsholt also has a professional counselling team that learners can self-refer to through Ledge for longer-term work.

## HIGHER EDUCATION STUDY CENTRE AND LOUNGE

Exclusively for HE students, the Higher Education Study Centre and Lounge offers 24-hour access to dedicated space for our UCS Students to study independently, in addition to the Higher Education seminar rooms also on site.

# CONTENTS

Access to Higher Education (Land-Based Studies)	26
Agriculture	30
Animal Science and Zoo Biology	44
Equestrian Science & Performance Management	64
Fisheries, Aquaculture and Marine Studies	82
Veterinary Nursing Science	96
Wildlife Ecology and Conservation	106
Higher & Degree Apprenticeships	118
Higher Apprenticeship Countryside Ranger Level 4	119
Degree Apprenticeship Ecologist Level 7	120
New Online Short Courses	121
Practical Short Courses	121
How to apply	122
Finance and fees	124
Additional costs	125
Financial support	126
Transport	127
How to find us	128
Index	129





## Land-Based Studies

# ACCESS TO HIGHER EDUCATION

This one-year course prepares adult learners who want to study at degree level but do not currently have the qualifications to apply.

This course is specifically designed to give you the foundation skills and knowledge, with a strong science focus, for studying a land-based degree.

## WHY CHOOSE THIS COURSE?

Provides a fast-track route to higher education

Continuous assessment with no end of year exams

Gain important GCSE English or Maths alongside this course

Includes three weeks' work placement

## HOW WILL I BE ASSESSED?

This intensive programme is assessed throughout the course, without final exams. Assessment will include essays, presentations, debates, class assessments and reports – all of which will prepare you for higher education.

## WHERE CAN I GO FROM HERE?

This course gives you UCAS tariff points for entry to University. Complete a full Level 3 qualification with us and we'll guarantee you an offer of a place on one of our relevant University Centre Sparsholt degree courses, subject to Admissions Terms & Conditions – for full details, go to **[sparsholt.ac.uk/university-centre](https://sparsholt.ac.uk/university-centre)**.

By the end of the course you will be fully prepared to progress on to a range of FdSc or BSc (Hons) degree programmes and take the next step towards your career goals.

## DURATION

ONE YEAR FULL-TIME

## COURSE LEADER

CAMEO KNIGHT –  
MSC, BSC (HONS)



LEARN MORE  
ON OUR  
WEBSITE

## WHAT WILL I LEARN?

The course includes elements of chemistry and biology along with the specialist study skills needed to study at higher education, and to undertake a small-scale research project.

You will study a range of core subjects and follow some specialist modules in either animal studies, equine studies, ecology and conservation or fishery studies.

Teaching is delivered through a supportive mix of taught sessions, seminars, tutorials and practical lessons, which will help you build your knowledge and understanding of your chosen specialism, while gaining the ability to research and present your ideas as reports and presentations.



## ENTRY REQUIREMENTS

Applications will be assessed on individual merit and whilst no formal qualifications are required, evidence of previous study is essential.

You will need to have either English or Maths at GCSE (or Level 2 equivalent) and will be offered the opportunity to study the other if required.

Most students will progress to a relevant degree at Sparsholt and you will be supported by your tutors.

Most students are aged 19 or above at the start of the course, however entry at 18 may be possible – please contact the Sparsholt admissions team for more details.

# STUDENT STORY

## SUE

### Access to HE Graduate and current UCS FdSc Veterinary Nursing Science student

Discovering Sparsholt during an open day was a game-changer. I've been on such a transformative journey during my time at UCS so far, it's been a big step transitioning from a background in administration and being a full-time mum into full-time education.

The Access to Higher Education course became my gateway back into education, offering crucial support as I re-entered the academic realm after many years. Beyond imparting valuable knowledge, the course equipped me with the skills needed to navigate higher education successfully.

Highlights of my Sparsholt experience so far include forming lasting friendships, delving into hands-on animal handling, and relishing the supportive environment fostered by both peers and lecturers.

The outstanding facilities for land-based studies and the engaging teaching style, encouraging open discussions, enriched my learning journey. The lecturers on the course were also fantastic, I felt supported and comfortable in asking questions.

They structure the lessons to allow free flow discussion, which I found to be a great way of learning.

Now in my first year of the FdSc Veterinary Nursing Science degree at UCS, my goal is to become a fully qualified Veterinary Nurse. Sparsholt's emphasis on practical experience, access to animals, and top-notch veterinary facilities aligns perfectly with my aspirations, laying a solid foundation for my future career.

As a mature student, I want to reassure prospective students that the Access course at Sparsholt provides invaluable support and guidance, making the transition to university study smoother. My journey is proof that it's never too late to pursue your passion, and Sparsholt offers the ideal environment to do just that.





**SUE WINNING THE 'BEST OVERALL  
PERFORMANCE AWARD' FOR ACCESS TO  
HIGHER EDUCATION (LAND-BASED STUDIES)**



# AGRICULTURE

Agriculture and food production has never been more vital, and University Centre Sparsholt has the facilities and industry network to make a real impact – delivering agricultural programmes since its creation 125 years ago and with a strong portfolio of current Further Education agriculture courses.

Sparsholt's 183 hectare campus include facilities such as a 126-hectare working farm on campus including dairy, sheep, pigs and arable enterprises, as well as a further 134 hectares at a nearby site, giving students access to an excellent range of learning opportunities.

With University Centre Sparsholt's strong and well-established industry links, there is a great demand for higher level education to enable the next generation of specialists to make an impact in farming and agri-tech businesses.

The subject content in both courses aim to give a solid foundation in the green sector, producing the food and managing the land in a sustainable way. Importantly theoretical subject knowledge is combined with skills and topical knowledge demanded by the needs of the industry.

FdSc Agriculture

Two years full-time

---

BSc (Hons) Agriculture

Three years full-time with optional additional one year industry placement (sandwich year)

Top-up: one year full-time



LEARN MORE  
ON OUR  
WEBSITE







# READY FOR INDUSTRY

The subject content in both courses aims to give a solid foundation in the green sector, producing the food and managing the land in an innovative and sustainable way. Importantly, the theoretical subject knowledge is combined with skills and topical knowledge demanded by the needs of the industry.

The first year will provide the foundation science of agriculture, focusing on the life cycle and important balance between crops and animals for a sustainable environment. A module of Academic Skills introduces students to managing academic work for subsequent years of study and in working life, and the year finishes with a supervised and assessed work placement.

The second year will develop the skills and knowledge required for employment in the agricultural industry, with research, data collection and industry engagement all fundamental.

The third year will allow depth and time spent on a research project that will be the dissertation.

This will combine skills in data collection, statistics and subject knowledge together with critical thinking to present a report on a topical subject. It can be done in conjunction with an agricultural company, institute or departmental legal body in the agricultural sector. The year is focused on developing a range of wider skills and knowledge required in the modern dynamic agricultural sector and will include business diversification, marketing and sustainable agricultural systems for a global market.

We work with organisations such as:

---

Barfoots of Botley

---

Leckford Estate (John Lewis Partnership)

---

Vitacress Salads

---

Savills Land Agents

---

Natural England

---

As well as local farmers and the  
National Farmers' Union

---

Farming & Wildlife Advisory Group (FWAG)



The Waitrose farm  
*Leckford Estate*







# JOIN THE EXPERTS





## DR CLAIRE CRESSWELL

PhD, MSc, BSc (Hons)

- Specialist research interests include agricultural ecology, plant-invertebrate interactions, water quality protection, avian behavioural ecology and monitoring
- Holds a BSc (Hons) in Animal Science and an MSc in Wildlife Management and Conservation from University of Reading
- PhD from Harper Adams University investigated the role of multifunctional field margin vegetative strips for the support of ecosystem services
- Licensed and active BTO bird ringer
- Farmland wildlife surveyor and consultant for habitats, birds and invertebrates.



## RUTH PAYNE

MSc, MA, BSc (Hons)

- Worked in a variety of agricultural settings, in various countries including New Zealand and Ireland, with main interests in livestock production
- Holds a BSc (Hons) in Agriculture from Seale-Hayne University College and an MSc in Animal and Welfare from Harper Adams University
- PGCE from The University of Southampton.



## DR ANDREW FERGUSON

- Currently working as General Manager for the Leckford Farm Estate, with a focus on biodiversity, soil health, and climate-positive practices
- Previous experience in farm, estate and arable management
- Holds a PhD in seed physiology and agronomy, with 30 years experience in roles across the agricultural and farm sector.



## TONY BAYLISS

- Over 30 years of experience in farming, manufacturing and distribution
- Previous industry roles have included farm and estate management, and commercial manager for Bayer crop science
- Currently working as an independent agronomist, providing BASIS and FACTS advice on all crop inputs and crop husbandry.





## FACILITIES

### PRACTICAL OPPORTUNITIES ON YOUR DOORSTEP

Dairy Unit with award-winning Holstein herd

---

New robotic milking parlour and development of agricultural technologies

---

Sheep Unit which is used to demonstrate good husbandry and management practice – the flock is lambed early and indoors to provide opportunities for student involvement

---

Arable profile which provides for the needs of the livestock enterprises. Further land off-site provides additional forage supplies, arable cropping for income generation and enhanced fieldwork opportunities for students

---

Specialist workshops for machinery and tractor repairs

---

Four main soil series have been identified at Sparsholt. These are Andover Series, Wallop Series, Winchester Series and Charity Series

---

Purpose-built Pig Unit which is a member of RSPCA Freedom Food and Farm Assured British Pigs

---

Sparsholt College Group has recently been part of a £6 million investment from the Government's Local Skills Improvement Fund Project. The project will see the development of a groundbreaking vertical growing environment at Sparsholt alongside other exciting opportunities for students to help prepare them for the technological advancements within the industry.





## RESEARCH

You will be encouraged to undertake challenging and innovative research as part of your course. This will make you stand out against the competition when you graduate.

Previous students have worked on diverse research projects, such as:

- The United Kingdom's public opinion on whether five freedoms meet an animal's welfare needs or should there be a sixth freedom of choice?
- How do different genres of music affect the milk yield of dairy ewes?
- What correlation does weather have on lameness in dairy herds?



## HEAD TO:

**SPARSHOLT.AC.UK/ UNIVERSITY-CENTRE**

Explore our 183-hectare countryside campus from the comfort of your own home through images, videos and interactive tours.

Navigate through our virtual campus tour by scanning across the campus, zooming into and clicking on different areas, and exploring the wide variety of specialist buildings, equipment, and much more that Sparsholt has to offer!



LEARN MORE  
ON OUR  
WEBSITE



# STUDENT STORY

## ROSE

### BSc Agriculture

I chose to come to UCS over other choices because of the more relaxed feel and smaller class sizes. This has meant I have more contact with my teachers and I could be with a group of like-minded people who empower me as they're here for the same reason.

My lecturers are absolutely fantastic, I couldn't love them more. They have all done their time in industry so they really get it and are teaching from a place of practical experience, and you feel that through the learning as you learn it as you would do it which is just invaluable. My tutors and lecturers all know me as a person and it's the most beneficial thing as they can help me exactly how I need it.

It's so important for young people to be in this industry as there are not enough of us, we need to learn all of these different things because in farming everything has a knock on effect. It's so important to empower young women in particular to be in farming as it's always been seen as a man's job and that perspective is completely changing because we're the future of food, we're key to how the UK runs and also we're great fun! We all love what we do, we work hard and we're going to change the world.

After I graduate, I see myself going to different countries, New Zealand or America to learn different systems then after that come back to the UK and change the industry, I would love to be on Countryfile one day.

I want to come back, work in industry and work on animal welfare within farming and look at how young stock should be cared for and regulated. I think being a UCS graduate will help me in the future because in our course we are taught about every single aspect of agriculture and there are so many career options after you leave as its designed so specifically for employment.

My advice to anyone who is thinking of applying to UCS is to absolutely do it. There are loads of facilities like the gym, game nights and clubs and societies. You also get a chance to set up your own society, I've set up the ballroom dancing society and I've had loads of students wanting to come. I live on campus, and it was the best decision I've ever made, I've made friends I'll never lose touch with and living together is great fun and we have a real sense of student community.





FdSc (Foundation Degree)

## AGRICULTURE

### WHY CHOOSE THIS DEGREE?

Designed to meet industry needs for strong agri-tech skills. Benefit from work placements in both years.

### CURRENT MODULES COVERED

#### LEVEL FOUR

Academic Skills

Industrial Experience

Fundamentals of Agricultural Science

Farm Environment and Wildlife

Agricultural Mechanisation

Livestock Production

Crop Production

#### LEVEL FIVE

Industrial Development

Applied Industrial Research

Agricultural Policies and Legislation

Farm Business Management

Livestock Nutrition

Agronomy

Livestock Breeding & Welfare

### HOW WILL I BE ASSESSED?

Final and in-session assessment will allow you to develop research and study skills as well as technical and expert knowledge.

Assessments include written assignments, presentations, project and lab reports, practical based and online portfolios and examinations.

### WHERE CAN I GO FROM HERE?

You can continue your studies with our BSc (Hons) Top-up programme, or enter industry. Graduates could use their skills to start a business or to work in agriculture.

### DURATION

TWO YEARS FULL-TIME

### UCAS CODE

D401

### COURSE LEADER

DR CLAIRE CRESSWELL – PhD,  
MSc, BSc (Hons)

VALIDATED BY:



LEARN MORE  
ON OUR  
WEBSITE

### WHAT WILL I LEARN?

The programme is designed to build your subject knowledge as the course progresses and explores topics in greater depth.

A combination of industrial placements in each year, annual residential field trips, visiting speakers and specialist lectures will maximise your industry exposure. Start to specialise with optional modules in one of three pathways – crops, livestock or general agriculture.



## ENTRY REQUIREMENTS

**A Level:** Two A Level passes, including one at grade C or above one of which should be in a science

**BTEC Ext. Diploma:** MMP

**City & Guilds Advanced Technical Ext. Diploma (1080):**  
MMP in an appropriate pathway

**BTEC Diploma:** MM in an appropriate pathway

**City & Guilds Advanced Technical Extended Diploma (720):** MM

**T Levels:** Pass in a relevant subject

**Access to HE:** A satisfactory pass in a relevant Access course with 74 tariff points, with 24 credits at merit or above including 12 credits in science based units

**International Baccalaureate:**  
Appropriate IB Certificates considered

Plus GCSEs in Maths and English at grade 4/C or above or Level 2 Functional Skills in Maths and English.

BSc (Hons)

## AGRICULTURE

### WHY CHOOSE THIS DEGREE?

Join an established provider with excellent reputation and industry links.

Learn from a fully operational commercial farm demonstrating best practice in agricultural husbandry.

Enjoy the opportunity to specialise in one of three pathways.

### CURRENT MODULES COVERED

#### LEVEL FOUR

Academic Skills

Industrial Experience

Fundamentals of Agricultural Science

Agricultural Mechanisation

Livestock Production

Crop Production

Farm Environment & Wildlife

#### LEVEL FIVE

Industrial Development

Statistics and Research Methods

Agricultural Policies and Legislation

Farm Business Management

Livestock Nutrition

Agronomy

Livestock Breeding & Welfare

### DURATION

THREE YEARS FULL-TIME, WITH OPTIONAL ADDITIONAL ONE YEAR INDUSTRY PLACEMENT (SANDWICH YEAR).

ONE-YEAR BSC TOP-UP  
ALSO AVAILABLE

### UCAS CODE

FULL-TIME D400,  
TOP UP D402

### COURSE LEADER

DR CLAIRE CRESSWELL –  
PhD, MSc, BSc (Hons)

VALIDATED BY:



LEARN MORE  
ON OUR  
WEBSITE

#### LEVEL SIX

Dissertation

Sustainable Agricultural Systems

Agricultural Business Development

Recent Developments in Agriculture

Advanced Crop Production (Optional)

Advanced Livestock Production (Optional)

Further Statistics

Professional Industrial Development

## HOW WILL I BE ASSESSED?

Final and in-session assessments feature in this programme, allowing you to develop research and study skills as well as technical and expert knowledge. Assessments include completion of a research dissertation, written assignments, presentations, project reports, practical based and online portfolios and examinations.

## WHERE CAN I GO FROM HERE?

You can progress onto postgraduate study, gain employment with agricultural organisations or use your skills to run your own business.

## WHAT WILL I LEARN?

Developed with industry leaders, this programme will ensure you have a strong foundation in Agriculture, as well as specialist knowledge in your chosen pathway – crops, livestock or general agriculture.

The specialist course content is outward looking to investigate the opportunities, constraints and influences on the agricultural industry more globally, as well as giving an understanding of marketing methods and diversification opportunities to create a robust business. Essential science, industry experience and academic skills will also boost your employability.

Each year will include an assessed work placement as well as a residential field trip to gain even more industry insight.

## ENTRY REQUIREMENTS

**A Level:** Three A Level passes, including two at grade C or above one of which should be in a science

---

**BTEC Ext. Diploma:** DMM

---

**City & Guilds Advanced Technical Ext. Diploma (1080):**

DMM in an appropriate pathway

---

**BTEC Diploma:** N/A

---

**City & Guilds Advanced Technical Extended Diploma (720):** N/A

---

**T Levels:** Merit in a relevant subject

---

**Access to HE:** A Merit profile in a relevant Access course with 96 tariff points including a minimum of 15 credits at merit in science based units

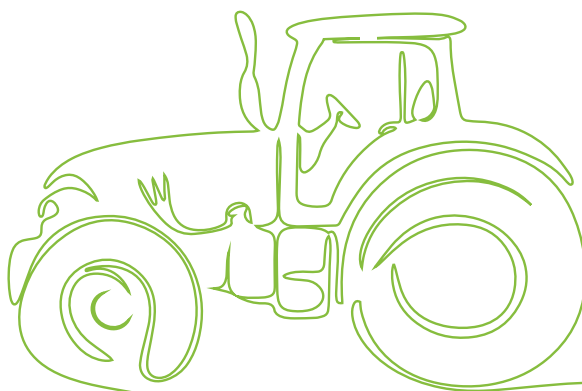
---

**International Baccalaureate:**

24 points with HL Science at 4

---

Plus GCSEs in Maths and English at grade 4/C or above or Level 2 Functional Skills in Maths and English.





# ANIMAL SCIENCE & ZOO BIOLOGY

As a UCS student you will benefit from lecturers with a wealth of industry experience that comes from working with BIAZA and EAZA research committees/working groups and a wide range of zoos.

Our teaching staff have experience and expertise in all areas of animal work including veterinary nursing, health and welfare, research, zoo industry and husbandry and animal behaviour and training.

FdSc Animal Management and Applied Science

Two years full-time

---

FdSc Applied Zoo Science

Two years full-time

---

BSc (Hons) Applied Animal Science

Three years full-time with optional additional one year industry placement (sandwich year)

Top-up: one year full-time

---

BSc (Hons) Applied Animal Behaviour Top-up

Two years part-time

---

BSc (Hons) Zoo Biology Top-up

One year full-time

---

MSc Applied Zoo Biology

One year full-time or 18 months full-time with industry research project

Two years part-time



LEARN MORE  
ON OUR  
WEBSITE







# READY FOR **INDUSTRY**

Our staff and graduates are highly regarded by industry. The lecturers' experience, knowledge and industry links can give you the head start you need.

We are a full member of the British and Irish Association of Zoos and Aquariums (BIAZA) and work closely with them. We have also worked with the European Association of Zoos and Aquaria (EAZA) on a funded project to define a competence framework for zoo keepers.

Our tutors bring their expertise to your learning from their work with world-leading zoos and nationally-recognised organisations. They also advise research committees, welfare groups and awarding bodies within the industry.

We have strong links with a range of wildlife, conservation and commercial organisations, allowing you to access work placements and to carry out industry relevant research that can feed into your career.

Our impressive industry links include:

Leading UK zoos such as: The Zoological Society of London (London and Whipsnade Zoos); the Living Rainforest; Chester Zoo; Dudley Zoo; Blackpool Zoo; Woburn Safari Park; the Royal Zoological Society of Scotland; Cotswold Wildlife Park and Gardens and the Aspinall Foundation (Howletts and Port Lympne Wild Animal Parks)

---

The British and Irish Association of Zoos and Aquariums (BIAZA)

---

Natural England

---

Association for the Study of Animal Behaviour (ASAB)

---

Association of British and Irish Wild Animal Keepers (ABWAK)

---

University of Surrey Veterinary Department

---

RSPCA

---

People's Trust for Endangered Species (PTES)

---

Animal Behaviour and Training Council (ABTC)





## STUDENT STORY

### NICKY, PHD GRADUATE

BSc (Hons) Applied  
Animal Behaviour

My desire to expand my knowledge and pursue a BSc in Animal Behaviour, aiming to become a Clinical Animal Behaviourist, led me to Sparsholt.

The UCS BSc Applied Animal Behaviour course is known and respected in the industry and aligned perfectly with my aspirations. The geographical convenience, coupled with having family nearby, made it an ideal choice.

The Sparsholt experience exceeded expectations. The course leader, also my supervisor, demonstrated exceptional dedication, fostering a passion for animal behaviour and welfare. Lecturers, experts in their fields with strong industry connections, provided both academic and practical knowledge. Block weeks and tailored modules accommodated my work schedule seamlessly.

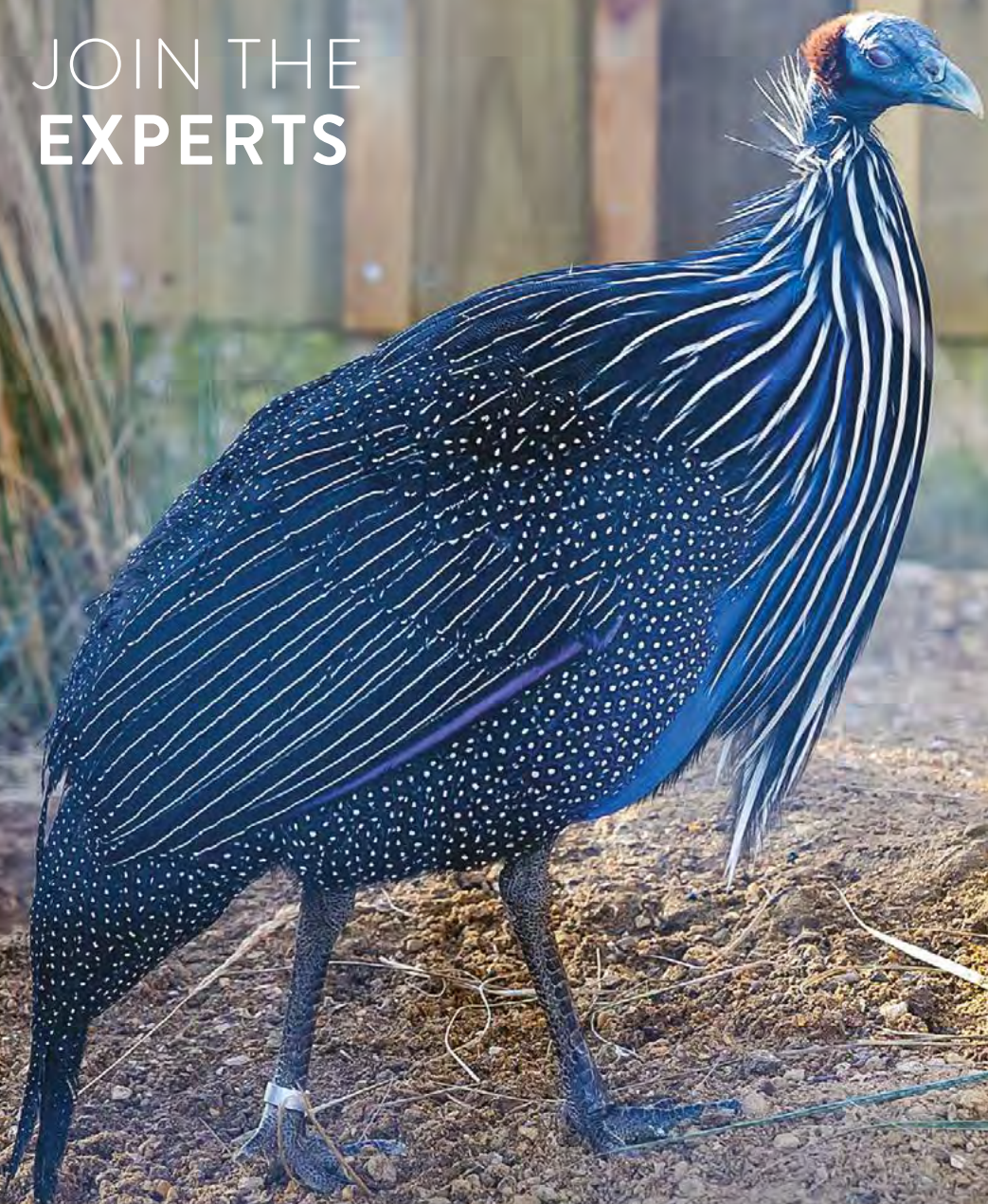
Sparsholt not only helped me achieve my initial ambitions but propelled me beyond them. The course's inspiration led me to discover a passion for research, prompting me to pursue a postgraduate degree.



READ FULL  
STORY ON  
OUR WEBSITE



# JOIN THE EXPERTS





## DR PAUL ROSE

PhD, MSc, PGCLT, ARCS, MifL, SFHEA

- PhD study in the social organisation of captive wild animals
- Research into the social organisation of giraffe and flamingos in a zoo environment
- Investigating the group dynamics of the flamingo flocks at the Wildfowl & Wetlands Trust (WWT) Slimbridge
- Member: IUCN Giraffe & Okapi Specialist Group; Giraffe Conservation Foundation; IUCN Flamingo Specialist Group
- Vice-chair of BIAZA research committee; research liaison officer, BIAZA Bird Working Group.



@pauledwardrose



## JAMES BRERETON

MSc, BSc (Hons), CET, AET, FHEA

- Masters' in Wild Animal Biology
- Lecturer in Zoo Biology and Animal Management
- Experience in a range of UK zoo collections
- Applied Animal Science Typesetter for the Journal of Zoo and Aquarium Research
- Supervised projects in nutrition, behavioural research and enclosure design for zoo-housed birds, reptiles and amphibians.



## HELEN JARRATT

PGDip, BSc (Hons), CCAB

- Certified Clinical Animal Behaviourist
- PGDip in Companion Animal Behaviour Counselling
- Member of the Association of Pet Behaviour Counsellors and Association of Pet Dog Trainers.



## DR MARIANNE FREEMAN

PhD, MSci, PGCHE, C. Anim. Sci, MRSB

- PhD, Queens University Belfast – development of camera trap methodology in monitoring deer distribution and abundance
- MSci Zoology, University of Glasgow – researched environmental and social influences on enclosure use and behaviour of zoo housed primates
- Co-founder of the ManyZoos initiative and collaborator on several ManyX projects
- Animal Behaviour and Training Council Assessor co-chair of the British Ecological Society Grants Committee and section editor for the Journal of Zoo and Aquarium Research.



@DrMSFreeman



## GEORGIA ABERNETHY PALMER

MSc, BSc (Hons), PGCE, QTLS & MSET

- Masters' in Equine Behaviour, Performance and Training
- Lecturer in Animal Science and Access to Higher Education Science
- Keen interest in agricultural and livestock science
- Experience in the equine industry, completed funded projects by Dodson & Horrell
- Masters research project was founded around rider weight and the implications of this on competition
- Taught in both Further Education and Higher Education.



## RESEARCH

You will be encouraged to undertake challenging and innovative research as part of your course. This will make you stand out against the competition when you graduate.

Students have published and presented to industry diverse research projects, such as:

- EAZA Nutrition conference presentations on sloth and koala diets
- Papers published on:
  - Enrichment in swans
  - Choice and control in dogs
- Several students presented at the first ever National Zoo Academy conference in 2023.

## FACILITIES

Sparsholt is currently home to over 600 animals comprising of over 100 species, including many of conservation interest. In addition to the many familiar companion animals held, the collection also has a zoo licence and is a full BIAZA member.

We have an extensive collection of zoo species including mammals such as a red panda, lemurs and meerkats as well as paddock animals such as alpaca, Anglo Nubian goats and zebu.

The bird collection is extensive and includes hornbills, owls, chicken and guinea fowl. The reptile and amphibian department is spread over eight rooms with over a hundred reptiles, more than a hundred amphibians and nearly 500 invertebrates.

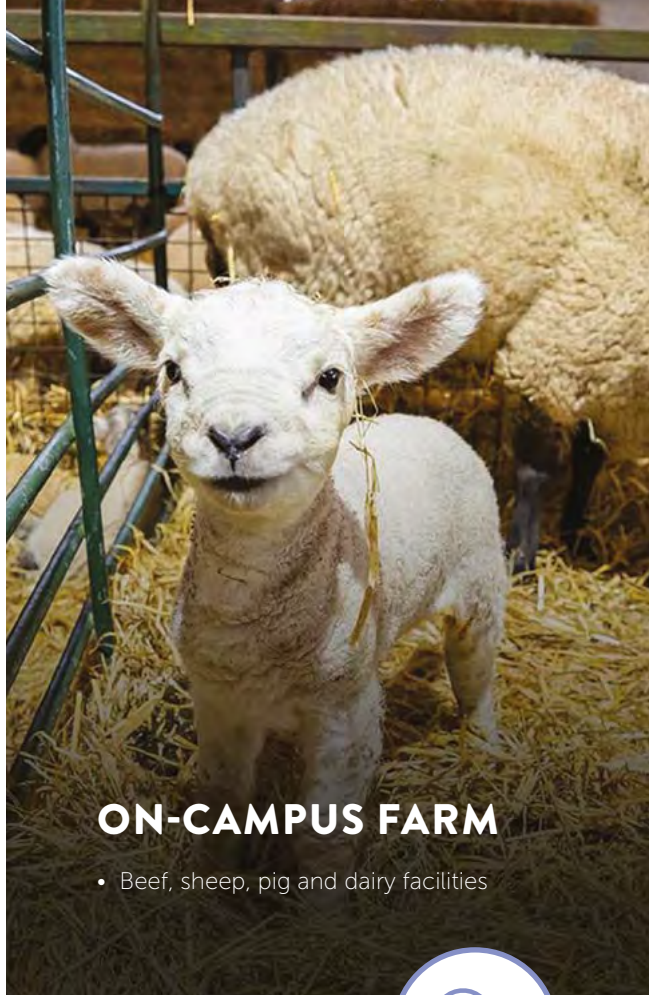


Use our extensive facilities to carry out innovative research as part of your course. Both undergraduate and postgraduate students are currently working on a wide range of industry-led research projects including behavioural studies, multi-collection dietary analysis, zoo education impact studies and welfare research.

The state-of-the-art kennels are licensed for up to 20 dogs on a day care or full board basis. The kennel block also accommodates a well-equipped grooming room. The cattery is home to a range of non-pedigree and pedigree breeds.

The Sparsholt Campus is also home to:

- Parkland sika deer herd
- Mixed species exhibit for ring tailed and black lemurs
- New invertebrate room
- On-campus equine centre.



## ON-CAMPUS FARM

- Beef, sheep, pig and dairy facilities



### SAM

Winner of The Rolf C Hagen (UK) LTD Rose Bowl Trophy for best overall performance at the 2023 Graduation Ceremony at Winchester Cathedral.



## HEAD TO:

**SPARSHOLT.AC.UK/ UNIVERSITY-CENTRE**

Explore our 183-hectare countryside campus from the comfort of your own home through images, videos and interactive tours.

Navigate through our virtual campus tour by scanning across the campus, zooming into and clicking on different areas, and exploring the wide variety of specialist buildings, equipment, and much more that Sparsholt has to offer!



LEARN MORE  
ON OUR  
WEBSITE

FdSc (Foundation Degree)

# ANIMAL MANAGEMENT AND APPLIED SCIENCE DEGREE

## WHY CHOOSE THIS DEGREE?

Designed to provide students with the theoretical knowledge and practical skills required within industry.

Utilising a range of research, practical and laboratory skills to apply theoretical knowledge to real world situations. Benefit from a diverse and exciting collection of animals in our BIAZA member centre.

## CURRENT MODULES COVERED

### LEVEL FOUR

Animal Management 1

Principles of Biology

Anatomy and Physiology

Industrial Experience

Academic Skills

Analytical Techniques

### LEVEL FIVE

Population Biology

Applied Industrial Research

Industrial Development

Ethology and Ethics

Animal Health

Animal Management 2

Nutrition

## HOW WILL I BE ASSESSED?

Much of the assessment is coursework based – essays, reports, practical portfolios and seminar presentations. Practical activities, in-class assessments and a limited number of exams also play a part.

## DURATION

TWO YEARS FULL-TIME

## UCAS CODE

D329

## COURSE LEADER

GEORGIA ABERNETHY PALMER –  
MSc, BSc (Hons), PGCE,  
QTLS & MSET

VALIDATED BY:



LEARN MORE  
ON OUR  
WEBSITE

## WHERE CAN I GO FROM HERE?

You can progress onto the BSc (Hons) Applied Animal Behaviour, BSc (Hons) Applied Animal Science or BSc (Hons) Zoo Biology Top-up courses at University Centre Sparsholt or other organisations.

Sparsholt graduates now work in a range of industries such as animal charities, veterinary practices and zoological collections.



## WHAT WILL I LEARN?

The course is designed to combine knowledge and research techniques in aspects of animal welfare and behaviour, the animal industry and wildlife management. In both years students will be required to complete 3 weeks of work placement in an area of the animal industry of their choice. Work placements are a key feature and benefit from the University centre's strong links with a variety of relevant organisations.

We offer optional overseas study tours as well as UK trips allowing students to experience a range of different animal related industries and develop key practical and transferable skills to support future employment.

Students have also undertaken work placement with the RSPCA, HART Wildlife Rescue, Dogs Trust, bird of prey centres including the Hawk Conservancy Trust, Orangutan Appeal and also placements at several local farms.

In the final year you will undertake a research project using the animals in our collection in conjunction with industry links. Prior projects have seen students working with Pet Remedy, Vitacress, ORA or in our very own Animal Health and Welfare Research Centre.

## ENTRY REQUIREMENTS

**A Level:** Two A Level passes, including one at grade C or above which should be in a science

---

**BTEC Extended Diploma:** MMP

---

**City & Guilds Advanced Technical Ext. Diploma (1080):**

MMP in an appropriate pathway

---

**BTEC National Diploma:** MM

---

**City & Guilds Advanced Technical Extended Diploma (720):**

MM in an appropriate pathway

---

**T Levels:** Pass in a relevant subject

---

**Access to HE:** A satisfactory pass in a relevant Access course with 74 tariff points, with 24 credits at merit or above including 12 credits in science-based units

---

**International Baccalaureate:**

Appropriate IB Certificates considered

---

Plus GCSE Maths and English at grade C/4 or above or Level 2 Functional Skills in Maths and English.



# FdSc (Foundation Degree)

## APPLIED ZOO SCIENCE

### WHY CHOOSE THIS DEGREE?

Benefit from working with expert lecturers and a diverse and exciting collection of animals in our BIAZA-member centre.

Extensive industry contacts and development of employability skills. Use tools such as record-keeping software that are used by zoos and aquaria globally.

A focus on zoo culture, promotion of natural environments and behaviours to support conservation and meet the growing awareness of the needs of exotic species collections, taught by industry experts.

### CURRENT MODULES COVERED

#### LEVEL FOUR

Academic Skills

Anatomy and Physiology

Principles of Biology

Industrial Experience

Exotic Animal Management

Zoo History and Culture

#### LEVEL FIVE

Animal Health

Applied Industrial Research

Population Biology

Industrial Development

Zoo Industry Ethics and Legislation

Zoo Animal Nutrition

Exotic Animal Behaviour, Welfare and Husbandry (optional)\*

Aquarium Design and Husbandry (optional)\*

\*subject to demand

### DURATION

TWO YEARS FULL-TIME

### UCAS CODE

CD34

### COURSE LEADER

JAMES BRERETON – MSc,  
BSc (Hons), CET, AET, FHEA

VALIDATED BY:



LEARN MORE  
ON OUR  
WEBSITE

### HOW WILL I BE ASSESSED?

Much of the assessment is coursework based – essays, reports, practical portfolios and seminar presentations. Practical activities, in-class assessments and exams also play a part.

### WHERE CAN I GO FROM HERE?

This programme will provide progression to BSc (Hons) Zoo Biology Top-up which in turn leads onto MSc Applied Zoo Biology. Sparsholt graduates now work in a variety of roles in the zoo and conservation sectors including keeper, nutritionist, education, media and marketing.

## WHAT WILL I LEARN?

You will develop research techniques in aspects of zoo animal welfare, behaviour and population management and consider the wider roles of the modern zoo in conservation and education.

Students undertake a work placement in each year of the programme and will develop their theoretical knowledge through practical application. Previous student placements have included Finkley Down Farm, Cotswold Wildlife Park, Birdworld and the New Forest Wildlife Park.

You will have the opportunity to develop your academic research through the Year 2 module on Applied Industrial Research, collecting data on a current exotic animal project.

## ENTRY REQUIREMENTS

**A Level:** Two A Level passes, including one at grade C or above which should be in a science

---

**BTEC Extended Diploma:** MMP

---

**City & Guilds Advanced**

**Technical Ext. Diploma (1080):**

MMP in an appropriate pathway

---

**BTEC National Diploma:** MM

---

**City & Guilds Advanced Technical**

**Extended Diploma (720):**

MMM in an appropriate pathway

---

**T Levels:** Pass in a relevant subject

---

**Access to HE:** A satisfactory pass in a relevant Access course with 74 tariff points, with 24 credits at merit or above including 12 credits in science-based units

---

**International Baccalaureate:**

Appropriate IB Certificates considered

---

\*Plus GCSE Maths and English at grade C/4 or above or Level 2 Functional Skills in Maths and English.



BSc (Hons)

## APPLIED ANIMAL SCIENCE

### WHY CHOOSE THIS DEGREE?

Benefit from a diverse and exciting collection of animals in our BIAZA member centre.

Develop strong scientific knowledge on a range of vertebrate species with focus on physiology, behaviour, welfare and husbandry. Build vital experience through practical handling skills, extensive work placements and strong links with industry.

### CURRENT MODULES COVERED

#### LEVEL FOUR

Animal Management 1

Analytical Techniques

Principles of Biology

Industrial Experience

Academic Skills

Anatomy and Physiology

#### LEVEL FIVE

Population Biology

Statistics and Research Methods

Nutrition

Ethology and Ethics

Industrial Development

Animal Management 2

Animal Health

### DURATION

THREE YEARS FULL-TIME WITH  
OPTIONAL ADDITIONAL ONE  
YEAR INDUSTRY PLACEMENT  
(SANDWICH YEAR)

ONE YEAR BSC TOP-UP  
ALSO AVAILABLE

### UCAS CODE

FULL-TIME D320  
TOP-UP D328

### COURSE LEADER

DR MARIANNE FREEMAN –  
PhD, MSci, C. Anim. Sci, MRSB

VALIDATED BY:



LEARN MORE  
ON OUR  
WEBSITE

#### LEVEL SIX

Dissertation

Further Statistics

Applied Animal Behaviour and  
Welfare (optional)\*

Applied Animal Health

Species Manipulation and Monitoring

Professional Industrial Development

Animal Industry and Trade

Reproductive Technologies and  
Genetics (optional)\*

Sustainable Resource

Management (optional)\*

\*subject to demand

## HOW WILL I BE ASSESSED?

Assessment is via a range of coursework including practical portfolios, laboratory reports, seminars and essays, some modules also include end of year assessments.

In the final year of the course utilising techniques developed throughout the course you will design and conduct your own dissertation study. Previous students have had their research from this published in academic journals, industry magazines or presented at conference.

## WHERE CAN I GO FROM HERE?

You can progress to the MSc in Applied Zoo Biology at University Centre Sparsholt; alternatively, there are many MSc and PhD programmes available at other universities. Sparsholt graduates now work in zoological collections, animal and conservation charities both in the UK and overseas.

## WHAT WILL I LEARN?

The course is designed to combine knowledge and research techniques in aspects on animal welfare and behaviour, the animal industry and wildlife management.

Work placements are a key feature and benefit from Sparsholt's strong links with a variety of relevant organisations. We offer optional overseas study tours as well as UK trips allowing students to experience a range of different animal related industries

Students have also undertaken work placement or dissertation data collection with the RSPCA, HART Wildlife Rescue, Dogs Trust, bird of prey centres including the Hawk Conservancy Trust, Orangutan Appeal and also placements at several local farms.

## ENTRY REQUIREMENTS

**A Level:** Three A level passes including two at grade C or above; one of which should be in a science.

---

**BTEC National Extended Diploma:** DMM

**City & Guilds Advanced Technical Ext. Diploma (1080):**

DMM in an appropriate pathway

---

**BTEC National Diploma:** N/A

**City & Guilds Advanced Technical Extended Diploma (720):** N/A

---

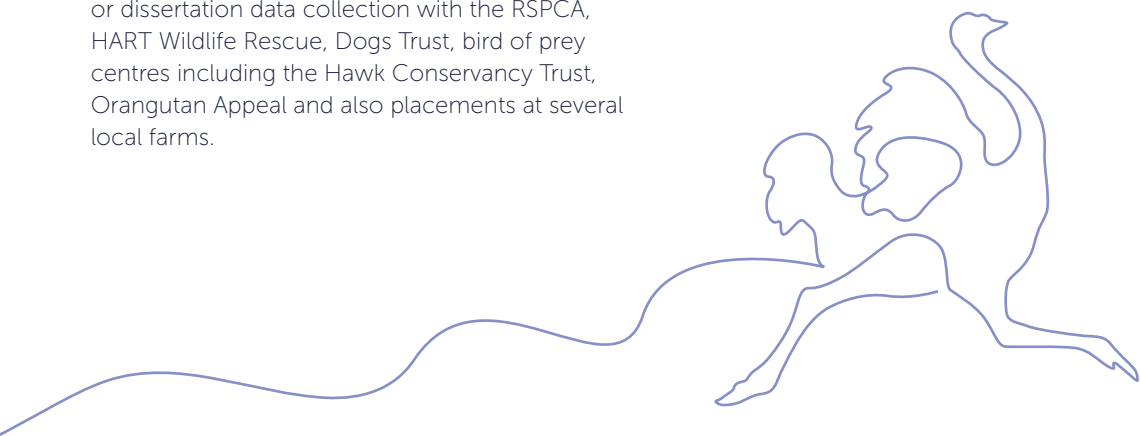
**T Level:** Merit in a relevant subject

**Access to HE** – A satisfactory pass in a relevant Access course with 74 tariff points, with 24 credits at merit or above including 12 credits in science-based units

---

**International Baccalaureate:** 24 points with HL Biology at 4

Plus GCSE Maths and English at grade C/4 or above or Level 2 Functional Skills in Maths and English.



BSc (Hons)

## APPLIED ANIMAL BEHAVIOUR DEGREE TOP-UP

### WHY CHOOSE THIS DEGREE?

Gain the knowledge needed to become a Clinical Animal Behaviourist as the course can be used towards accreditation following graduation.

Combine study and work with this flexible, part-time course.

Develop expertise through an extended animal behaviour dissertation project.

UCS teaching team are members of ABTC, FABC and ASAB.

### CURRENT MODULES COVERED

#### LEVEL SIX – YEAR ONE

Animal Communication Learning and Training

Ethology Domestication and Anthrozoology

Mechanisms of Behaviour

Ethics Welfare and Law

#### LEVEL SIX – YEAR TWO

Human Psychology and Clinical Practice

Dissertation and Data Analysis

### HOW WILL I BE ASSESSED?

You will showcase your knowledge through a combination of written assignments, case studies, seminar presentations and exams. At Level 6 the dissertation module will prove your skills within the field of research and we encourage students to present this work to other organisations.

### DURATION

TWO YEARS

PART-TIME VIA VIRTUAL  
LEARNING ENVIRONMENT

### HOW TO APPLY

APPLY DIRECT ON  
OUR WEBSITE

### SUBJECT LEADER

DR MARIANNE FREEMAN –  
PhD, MSci, C. Anim. Sci, MRSB

VALIDATED BY:



LEARN MORE  
ON OUR  
WEBSITE

### WHERE CAN I GO FROM HERE?

The course works towards the knowledge elements that are required for certification as a Clinical Animal Behaviourist as identified by the Association for the Study of Animal Behaviour and the Animal Behaviour and Training Council. You can also continue your studies to MSc and PhD level.

Sparsholt students have developed their own businesses focused on behavioural consultations for a range of species including dogs, cats and horses.

Others work in the veterinary industry. Several students have progressed on to postgraduate study, one continuing and developing her dissertation project into a PhD. (Read more on page 47).

## WHAT WILL I LEARN?

This course covers a wide range of topics related to animal behaviour, you will study human and animal psychology, consider how physiology impacts on behaviour and develop links between legislation and ethics.

Using an evidence-based approach the evolving relationship between humans and animals is explored in detail including application to developing training techniques.

Utilising techniques developed throughout the course you will design and conduct your own behavioural dissertation study.

Previous students have conducted research on:

- 'Impact of scent enrichment on behaviour of reptiles'
- 'Effect of noise levels in grooming facilities on dog behaviour and stress levels'
- 'Cooperative care doesn't scare – impact of choice and control on stress levels in dogs during routine nail clipping – Published as a CABI case study online'
- 'Investigation into veterinary professionals' knowledge of cognitive dysfunction syndrome in cats.' Published in Veterinary Nursing Journal.

## ATTENDANCE REQUIREMENTS

The BSc (Hons) Applied Animal Behaviour Top-up degree is provided via our Virtual learning platform LEDGE, which is supported by six block weeks at the UCS campus.

Students are required to attend four UCS-based block weeks in Year 1 and two UCS-based block weeks in Year 2.

A couple of additional days per year are also required for additional activities like examinations. Dates of these will be given well in advance.

## ENTRY REQUIREMENTS

**HND or Foundation Degree**

**Diploma of Higher Education** – in a suitable subject

**UCS IS A SUPPORTING MEMBER OF THE ANIMAL BEHAVIOUR AND TRAINING COUNCIL**



BSc (Hons)

## ZOO BIOLOGY – TOP-UP

### WHY CHOOSE THIS DEGREE?

Benefit from working with a diverse and exciting collection of animals in our BIAZA-member centre.

Develop expertise, data analysis and research skills and use them in your dissertation project.

Be taught by leading industry experts.

### CURRENT MODULES COVERED

#### LEVEL SIX

Dissertation

Further Statistics

Professional Industrial Development

Applied Zoo Animal Behaviour

Conservation Biology

Wild Animal Veterinary Science

Conservation Education

### HOW WILL I BE ASSESSED?

Assessment is primarily coursework based, comprising practical portfolios, case studies, seminars, reports and essays.

This is supplemented in some units by an exam.

### WHERE CAN I GO FROM HERE?

You can progress onto MSc and PhD programmes such as our MSc in Applied Zoo Biology.

Sparsholt Zoo Biology graduates now work in a variety of roles in the zoo and conservation sectors, while others have continued in education to postgraduate level.

### DURATION

ONE YEAR FULL-TIME

### UCAS CODE

C300

### COURSE LEADER

JAMES BRERETON – MSc,  
BSc (Hons),CET, AET, FHEA

VALIDATED BY:



LEARN MORE  
ON OUR  
WEBSITE

### WHAT WILL I LEARN?

Building on a strong science foundation, the course will take your knowledge of zoo management to the next level within an industry-standard environment. You will develop research techniques in aspects of zoo animal welfare, behaviour and population management, as well as considering the wider roles of the modern zoo such as visitor learning.

The course promotes the idea of evidence based husbandry as a fundamental feature of contemporary zoo biology and combines practical research skills, husbandry techniques and vital management skills. There is also a strong data analysis theme to prepare you for and support you in your dissertation research.

### ENTRY REQUIREMENTS

FdSc or HND in Animal Management,  
Animal Science or related subject.



MSc

## APPLIED ZOO BIOLOGY

---

### WHY CHOOSE THIS DEGREE?

Taught by industry experts who are research active and have strong national and international links.

Benefit from a diverse and exciting collection of animals in our BIAZA member centre.

Possibility to undertake a six-month industry placement and research project.

### HOW WILL I BE ASSESSED?

Modules are assessed by a mix of coursework, practical assessments, exams, case studies and project work. Emphasis is placed on the development of critical evaluation and research skills with the use of formative assessments throughout the programme of study.

### WHERE CAN I GO FROM HERE?

Career pathways include zoo or conservation research, environmental education or zoo management. Alternatively you may choose to study a doctorate or a career in lecturing.

### WHAT WILL I LEARN?

Building on your Undergraduate degree, the course is designed to expand your knowledge of zoo animal biology and refine your research techniques in aspects of zoo animal welfare, behaviour, population management and the wider roles of the modern zoo such as visitor learning.

In addition to traditional lectures and seminars, modules are delivered using the practical resources of our Animal Health and Welfare Research Centre, industry specific software and databases, conference attendance, guest speakers and off-site visits.

### DURATION

ONE YEAR FULL-TIME OR  
TWO YEARS PART-TIME

### HOW TO APPLY

APPLY DIRECT ON  
OUR WEBSITE

### SUBJECT LEADER

DR MARIANNE FREEMAN –  
PhD, MSci, C. Anim. Sci, MRSB

VALIDATED BY:



LEARN MORE  
ON OUR  
WEBSITE

Links are encouraged to external organisations, commercial companies and collaborative research projects. Previous students' dissertations have been presented at the BIAZA and EAZA research conferences.

Each year there is an opportunity for some students to undertake a six-month industry placement at a range of zoo and aquarium collections where they will gain valuable practical industry experience while conducting an industry-endorsed research project.

### ENTRY REQUIREMENTS

BSc (Hons) in Zoo Biology, Applied Animal Science or a related subject at 2:2 or above.

## CURRENT MODULES COVERED

### RESEARCH PROJECT AND RESEARCH METHODS

The research project enables students to undertake a detailed experimental study in a chosen area to develop analytical research skills with the support of dedicated supervisors.

The student profile is developed throughout the programme, utilising a range of advanced academic and research skills with an emphasis on the practical industry applications of research findings. Interpretation and critical evaluation of current research findings will enable the student to further develop links between the zoo industry and the scientific community.

### EVIDENCE-BASED HUSBANDRY

Zoo husbandry has traditionally relied on inference and anecdote but the need for an evidence based approach is now well documented. Practical application of species biology will be considered and developed alongside a range of methods that can be utilised to evaluate current welfare and husbandry standards.

Behavioural analysis and enclosure utilisation studies will underpin this approach, along with wider consideration of health and nutrition.

### CONTEMPORARY ISSUES IN ZOO BIOLOGY

This module sets the historical context of zoos and considers their evolution. The roles of the modern zoo are considered in line with the World Zoo and Aquarium Conservation Strategy with future trends identified and considered.

Population management and conservation biology are discussed and applied to modern zoo theory with the use of industry specific software (for example ZIMS) integrated into this delivery.

### VISITOR STUDIES AND INTERPRETATION

Education is arguably the most important role of the modern zoo.

This module explores how visitors engage with and learn from the numerous opportunities provided within the zoo, drawing on the principles of interpretation, exhibitry and recreational learning theory. It explores the cultural and social context of the zoo and investigates visitor motivation and expectations.

Methods of delivering the zoo message will be considered with evaluation of the effectiveness and impact of provision a key theme.





# EQUESTRIAN SCIENCE & PERFORMANCE MANAGEMENT

On our Equine Science & Welfare and Equestrian Performance & Business Management degree courses – from undergraduate to postgraduate – we combine professional coaching at our BHS-approved Equine Centre with an experienced and specialist teaching team, supported by our cutting-edge resources and facilities.

Students are encouraged and supported to undertake industry-relevant research, presenting their findings at key conferences and events, alongside forging employer links, networking opportunities and further developing their graduate skills.

FdSc Equestrian Performance and Business Management

Two years full-time

---

BSc (Hons) Equestrian Performance and Business Management

Three years full-time with optional additional one year industry placement (sandwich year)

Top-up: one year full-time

---

BSc (Hons) Equine Science and Welfare

Three years full-time with optional additional one year industry placement (sandwich year)

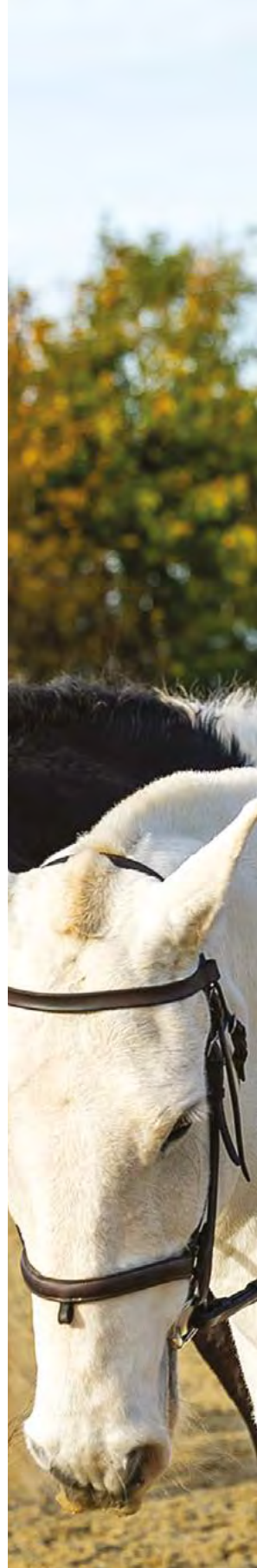
Top-up: one year full-time

---

MSc Equine Behaviour, Performance and Training

One year full-time

Two years part-time







# READY FOR **INDUSTRY**

As a UCS equine student you will benefit from both our expert teaching team and professional environment, further enhancing your career progression.

The equine team has extensive industry experience and links, which supports you when developing your graduate skills and future employment opportunities.

Our Rider Performance Studio houses our state-of-the-art Racewood Eventing Simulator, which will enable you to further expand your level of knowledge surrounding rider performance and biomechanics, with the potential to support our industry relevant research currently being undertaken within UCS equine.

UCS equine have a range of collaborative research partnerships whereby you will have the opportunity to work alongside key organisations to widen your experience, industry connections and confidence in your own networking skills.

UCS Equine staff have impressive links and work with organisations such as:

The British Horse Society (BHS)

BETA

British Dressage

The British Equestrian Federation

The British Horse Foundation

Flexars

Juddmonte Stud

Allen & Page

Advancing Equine Scientific Excellence (AESE)

The British Society of Animal Science

The International Society for Equitation Science

Saracen Horse Feed

British Showjumping

Natural Animal Feeds

World Horse Welfare

The Horse Trust

The British Equestrian Trade Association

National Equine Welfare Council

Redwings

Landex







# JOIN THE EXPERTS





## NATALIE STONES

MRes, PGCE, QTLS, BSc (Hons)

- Worked as an Equine Veterinary Nurse within clinical, surgical and on-call roles, gaining an interest in colic and equine dysautonomia, as well as lameness and diagnostic modalities
- Specialist areas of interest include equine nutrition, gastrointestinal and neurological conditions, veterinary science and rehabilitation
- Industry experience includes working, producing and grooming in a variety of settings, including dressage studs and rehabilitation yards
- Competitive rider across all disciplines, enjoying self-producing horses from a young age
- Completed her MRes in July 2020 on rider body image and positive impact on rider biomechanics.



## CAMEO KNIGHT

MSc, BSc (Hons)

- Studied at undergraduate and postgraduate level at University Centre Sparsholt
- Career focused in Sales and Marketing, particularly within the agricultural and events sector
- Experienced in both the equine and agricultural industries
- Editorial pieces published in numerous equestrian magazines, all focusing on equine nutrition and its effects on health and welfare
- Varied industry experience from the racing sector to showjumping
- Independent research focusing on utilising equine faecal pH and masticatory kinematics to indicate hindgut health
- A key interest in the utilisation of Electromyography by way of data collection
- Has previously worked alongside Dodson & Horrell Ltd on research relating to nutrition and its effects.



## ABIGAIL HEAMAN

MRes, PGCE, BSc (Hons), FHEA

- Senior Curriculum Leader for Higher Education
- Career focused within equine breeding industry with specific experience foaling at a racing stud yard and working at an equine embryo transfer centre
- Additional varied industry experience working at riding schools, equine rescue and rehabilitation centre, eventing groom for an Olympic rider, equine veterinary laboratory analysis
- Competed own horse in various disciplines
- Research into factors influencing the success of equine embryo recovery and transfer
- Holds an MRes in Equestrian Performance Management
- Specialist subject areas breeding and stud management, genetics, artificial reproductive technologies, health and welfare, animal behaviour.



## RESEARCH

Previous students have presented their research on both a national and international scale, giving them experience that further supports their graduate skills, academic expertise and industry exposure.

Examples include:

- The influence of menstruation on the performance of the rider
- Exploring equine weight management and obesity-associated conditions from leisure and professional stakeholders
- The effect of handedness and footedness on postural asymmetries in dressage riders
- Multiple projects investigating the perception of body image and body shape in riders and its influence on performance and judging scores
- Contemplating the 5 domains in UK horse owner perception of welfare
- Investigations into hay soaking time and properties of effluent water.





## FACILITIES

### ARENAS AND RIDING

60x23 metre indoor arena

Three outdoor arenas, the largest of which measures 70x50 metres

Extensive hacking and cross-country schooling field

Delsys and Biometrics EMG analysis system

Heart rate monitors

Quintic biomechanical analysis software

Qualiysis and visual 3D software

Thermal Imaging Camera

IPos rein sensors

ETB Pegasus Gaitsmart System

State of the art cameras for 3D biomechanical data collection

Fully-equipped laboratories

Avansce Ltd's Synchronicity rein analysis system

Stables equipped with InfraRed cameras for behavioural observations

Remote behavioural sensors and Equisense GPS sensors.

## STUDENT LIVERY OPTIONS

### Why not bring your horse to UCS too?

If you select University Centre Sparsholt as first or second choice for your degree, you are guaranteed a space on our DIY Livery Yard at our Equine Centre. This includes full use of our facilities, individual turn out and excellent hacking at a competitive price.



SCAN HERE  
TO FIND  
OUT MORE

## HEAD TO:

[SPARSHOLT.AC.UK/ UNIVERSITY-CENTRE](https://sparsholt.ac.uk/university-centre)

Explore our 183-hectare countryside campus from the comfort of your own home through images, videos and interactive tours.

Navigate through our virtual campus tour by scanning across the campus, zooming into and clicking on different areas, and exploring the wide variety of specialist buildings, equipment, and much more that Sparsholt has to offer!



LEARN MORE  
ON OUR  
WEBSITE





# STUDENT STORY

## FREYA

### BSc (Hons) Equine Science

I chose to come to University Centre Sparsholt because of the small class sizes and to widen my career path. The location is a stunning setting, with so many green, open spaces.

I was looking at other universities too but as soon as I visited Sparsholt I knew it was the place I wanted to study. The class sizes are small, and the lecturers are so supportive, anything you need help with they are there.

We get to experience loads of amazing things – loads of dissections, loads of day trips, and it's just overall an amazing place to be. We have a rider performance studio which really allows us to look at our riding in depth, our accommodation is amazing and there are loads of on-site facilities like the library and study centre. I'm a resident here and get to take part in lots of activities such as quizzes, karaoke, balls and parties.

There is also the opportunity to bring your own horse on DIY livery, which was really important to me when choosing a university. The facilities are great, we have a solarium, horse walker and all the arenas and the hacking is amazing – it's just so good to have my horse here with me.

I'm hoping to stay here to complete my Master's and then work in the nutrition side of the industry, which is something that really interests me. Being at University Centre Sparsholt has helped me grow in confidence and I've made so many new friends here, it's really brought me out of my shell.

My advice is to give everything a go – the facilities here are amazing, everyone is so supportive and they'll give you help with anything you need.



FdSc (Foundation Degree)

## EQUESTRIAN PERFORMANCE & BUSINESS MANAGEMENT

### WHY CHOOSE THIS DEGREE?

If you are interested in enhancing your knowledge and skills of the equine business, marketing, event management and performance horse sectors, this course is for you! You can either complete your FdSc and enter in to employment or progress on to our BSc top-up to gain your full BSc degree.

Work experience opportunities at all course stages.

Get hands-on with research projects, events and onsite competitions.

### CURRENT MODULES COVERED

#### LEVEL FOUR

Equitation

Principles of the Equine Industry

Equine Health and Welfare

Scientific Principles in Equitation

Equine Biological and Functional Anatomy

Industrial Experience

Academic Skills

#### LEVEL FIVE

Equine Media and Entrepreneurship

Equitation Science and Coaching

Equine Reproductive Physiology and Genetics

Equine Nutrition

Applied Industrial Research

Industrial Development

Equine Business and Marketing

### DURATION

TWO YEARS FULL-TIME

### UCAS CODE

D422

### COURSE LEADER

CAMEO KNIGHT –  
MSc, BSc (Hons)

VALIDATED BY:



LEARN MORE  
ON OUR  
WEBSITE

### HOW WILL I BE ASSESSED?

Tutorial support throughout the study will help you to develop your skills and knowledge, using a varied range of assessments, including written exams, case studies, seminars and investigative reports as well as oral assessments.

### WHERE CAN I GO FROM HERE?

Many FdSc graduates choose to join the BSc Top-up programme in Equestrian Performance and Business Management. University Centre Sparsholt graduates enjoy a range of careers in equine centres or riding schools, grooming for a range of disciplines and sectors including welfare, rehabilitation and breeding.

## WHAT WILL I LEARN?

This course has been carefully designed to help you build strong practical skills alongside applied knowledge to maximise your employability.

This practical emphasis is reflected in the course content, with modules in equitation, husbandry and training, while other modules focus on your applied scientific knowledge and business skills.

Using all the resources of our flagship Equine Centre, you will experience riding, running events and shows as well as completing assignments and research projects.

Research projects focus on the management of a commercial sized centre, while external study visits increase industry exposure. Work placements throughout the course complete the picture.

## ENTRY REQUIREMENTS

**A Level:** Two A Level passes, including a minimum of grade C in a science subject

**BTEC Extended Diploma:** MMP

**City & Guilds Advanced Technical Ext. Diploma (1080):**  
MMP in an appropriate pathway

**BTEC Diploma:** MM

**T Levels:** Pass in a relevant subject

**City & Guilds Advanced Technical Extended Diploma (720):**  
MM in an appropriate pathway

**Access to HE:** A satisfactory pass in a relevant Access course with 74 tariff points, with 24 credits at merit or above including 12 credits in science-based units

**International Baccalaureate:**  
Appropriate IB Certificates considered

Plus GCSE Maths and English at grade 4/C or above in Level 2 Functional Skills in Maths and English.



BSc (Hons)

# EQUESTRIAN PERFORMANCE & BUSINESS MANAGEMENT

## WHY CHOOSE THIS DEGREE?

This degree will enhance your knowledge and skills of the equine business, marketing, event management and performance horse sectors.

Be taught by leading industry experts who are passionate about delivering and conducting the latest research.

Outstanding onsite facilities that enable you to develop specialist skills and knowledge preparing you for a successful transition into employment.

Tailor your learning to your interests and career goals with optional modules and dissertation at Level 6.

Full-time top-up programme also available.

## CURRENT MODULES COVERED

### LEVEL FOUR

Equitation

Principles of the Equine Industry

Equine Health and Welfare

Scientific Principles in Equitation

Equine Biological and Functional Anatomy

Industrial Experience

Academic Skills

### LEVEL FIVE

Equine Media and Entrepreneurship

Equitation Science and Coaching

Equine Reproductive Physiology and Genetics

Statistics and Research Methods

Equine Nutrition

Industrial Development

Equine Business and Marketing

## DURATION

THREE YEARS FULL-TIME WITH  
OPTIONAL ADDITIONAL ONE  
YEAR INDUSTRY PLACEMENT  
(SANDWICH YEAR)

ONE YEAR BSC TOP-UP  
ALSO AVAILABLE

## UCAS CODE

FULL-TIME D322  
TOP-UP D423

## COURSE LEADER

CAMEO KNIGHT –  
MSc, BSc (Hons)

VALIDATED BY:



LEARN MORE  
ON OUR  
WEBSITE

### LEVEL SIX

Dissertation

Management and Rehabilitation of the  
Equine Athlete

Equine Event and Enterprise Management

Further Statistics

Professional Industrial Development

Contemporary Developments in  
Equine Research

Performance Horse Nutrition – optional\*

Equine Reproductive Technologies – optional\*

\*subject to demand

## HOW WILL I BE ASSESSED?

Tutorial support throughout your programme of study will help you to develop your skills and knowledge, using a varied range of assessments, including written exams, case studies, seminars, investigative reports and oral assessments.

## WHERE CAN I GO FROM HERE?

You can progress to further study on the MSc in Equine Behaviour, Performance and Training or another MSc, MA or PhD programme.

University Centre Sparsholt graduates enjoy a range of careers in sales and marketing, lecturing, journalism, event management, breeding and grooming for a range of competitive disciplines.

## WHAT WILL I LEARN?

The programme is designed to prepare you for a career in the exciting and demanding equine industry. Using the outstanding facilities of the BHS approved Equine Centre, you will develop the vital skills needed, from riding and husbandry at Level 4 to research and analysis at Level 6.

This course provides real life experience by giving you the chance to organise an event of your choosing. In all three years of the course, you will also be involved in scientific projects and industrial experience and careers development.

A range of offsite visits and guest lectures give yet more industry insight, and give students the opportunity to develop their own links with professionals within the industry.

## ENTRY REQUIREMENTS

**A Level:** Three A Levels including two at grade C or above, including a minimum of grade C in a science subject

**BTEC Extended Diploma:** DMM

**City & Guilds Advanced Technical Ext. Diploma (1080):**  
DMM in an appropriate pathway

**BTEC Diploma:** N/A

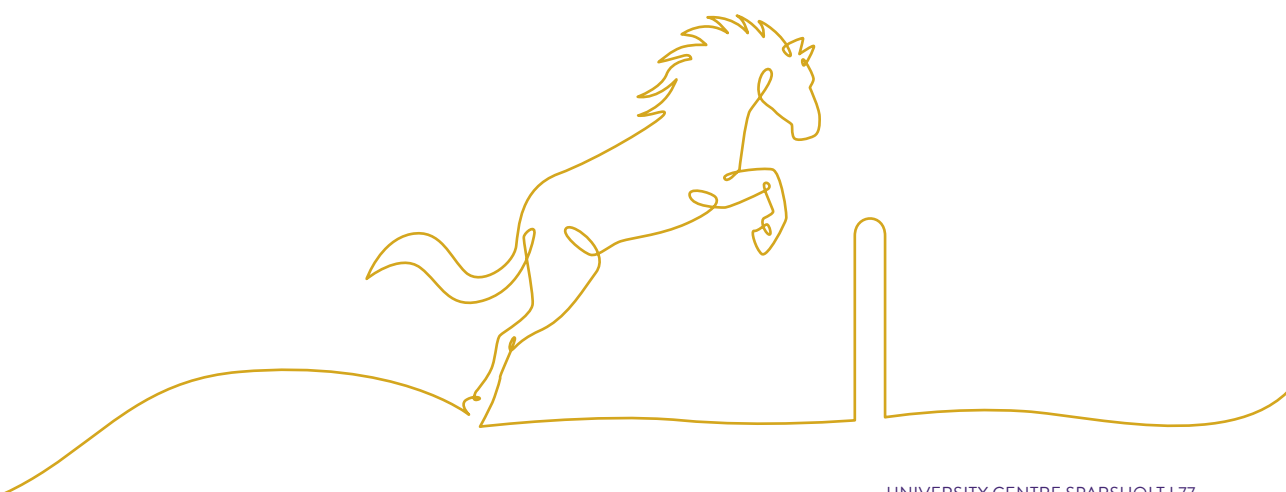
**City & Guilds Advanced Technical Extended Diploma (720):** N/A

**T Levels:** Merit in a relevant subject

**Access to HE:** A Merit profile in a relevant Access course with 96 tariff points including a minimum of 15 credits at merit in science based units

**International Baccalaureate:** 24 points with HL Science at 4

Plus GCSE Maths and English at grade 4/C or above or Level 2 Functional Skills in Maths and English.



BSc (Hons)

# EQUINE SCIENCE & WELFARE

## WHY CHOOSE THIS DEGREE?

Join us if you are interested in enhancing your knowledge and skills within equine science and welfare sectors including nutrition, welfare, research, biomechanics and sports performance.

Gain the scientific skills and knowledge needed for a career in scientific support and management of the performance horse.

Be taught by leading industry experts in outstanding onsite facilities. Access fantastic facilities such as the Rider Performance Studio and Racewood Eventing Simulator.

Tailor your learning to your interests and career goals with optional units and dissertation at Level 6.

Be taught by leading industry experts who are passionate about delivering and conducting the latest research.

## CURRENT MODULES COVERED

### LEVEL FOUR

Equitation

Principles of the Equine Industry

Equine Health and Welfare

Scientific Principles in Equitation

Equine Biological and Functional Anatomy

Industrial Experience

Academic Skills

### LEVEL FIVE

Equine Ethology and Welfare

Equitation Science and Coaching

Equine Reproductive Physiology and Genetics

Statistics and Research Methods

Equine Nutrition

Industrial Development

Equine Exercise Physiology

## DURATION

THREE YEARS FULL-TIME WITH  
OPTIONAL ADDITIONAL ONE  
YEAR INDUSTRY PLACEMENT  
(SANDWICH YEAR)

ONE YEAR BSC TOP-UP  
ALSO AVAILABLE

## UCAS CODE

FULL-TIME D426  
TOP-UP 422D

## COURSE LEADER

NATALIE STONES – MRes,  
PGCE, QTLS, BSc (Hons)

VALIDATED BY:



LEARN MORE  
ON OUR  
WEBSITE

### LEVEL SIX

Dissertation

Management and Rehabilitation of the  
Equine Athlete

Equine Veterinary Science

Further Statistics

Professional Industrial Development

Contemporary Developments in  
Equine Research

Performance Horse Nutrition – optional \*

Equine Reproductive Technologies – optional\*

\*subject to demand

## HOW WILL I BE ASSESSED?

Tutorial support throughout your programme of study will help you to develop your skills and knowledge, using a varied range of assessments, including written exams, case studies, seminars, investigative reports and oral assessments.

## WHERE CAN I GO FROM HERE?

You can progress to further study on the MSc in Equine Behaviour, Performance and Training or another MSc such as MSc in Veterinary Physiotherapy or PhD programme.

Our graduates enjoy a range of careers in equine veterinary nursing, equine behaviour, breeding, nutrition and welfare, laboratory based research and scientific support of performance horses.

## WHAT WILL I LEARN?

The programme is designed to prepare you for a career in scientific support and management of the performance horse. You will use the outstanding facilities of the BHS-approved Equine Centre as well as fully equipped laboratories to develop the vital skills needed.

At Level 6, optional modules enable you to choose the study path that suits your career aims, with equine science subjects such as Equine Genetics and Reproductive Technologies and Applied Nutrition on offer. Throughout your course, you will undertake a range of industrial experience and careers development opportunities. A range of offsite visits and guest lectures give yet more industry insight.

## ENTRY REQUIREMENTS

**A Level:** Three A Levels including two at grade C or above, including a minimum of grade C in a science subject

**BTEC Extended Diploma:** DMM

**City & Guilds Advanced Technical Ext. Diploma (1080):**  
DMM in an appropriate pathway

**BTEC Diploma:** N/A

**City & Guilds Advanced Technical Extended Diploma (720):** N/A

**T Levels:** Merit in a relevant subject

**Access to HE:** A Merit profile in a relevant Access course with 96 tariff points including a minimum of 15 credits at merit in science based units

**International Baccalaureate:** 24 points with HL Science at 4

Plus GCSE Maths and English at grade C/4 or above or Level 2 Functional Skills in Maths and English.



MSc

# EQUINE BEHAVIOUR, PERFORMANCE & TRAINING

## WHY CHOOSE THIS DEGREE?

This degree is perfect for students interested in enhancing the depth of their core equine knowledge and research in areas such as rider psychology, sports performance, behaviour and the relationship between the equestrian partnership and the role of the coach.

Excellent facilities, expert teaching, strong links with industry and small class sizes.

Take your equine knowledge to the next level with this specialist postgraduate programme.

Develop research expertise relevant to industry using extensive laboratory, performance analysis and BHS-approved Equine Centre facilities. Access fantastic facilities such as the Rider Performance Studio and Racewood Eventing Simulator.

## CURRENT MODULES COVERED

Equestrian Training

Equestrian Performance

Applied Animal Behaviour Science

Research Methods

Research Projects

## HOW WILL I BE ASSESSED?

Modules are assessed by a mix of coursework, written and oral exams, case studies, seminars and research-based reports. Emphasis is placed on the development of critical evaluation and research skills with the use of formative assessments throughout the programme of study. Developmental feedback will enable you to widen the range of your academic skills as you progress through the programme.

## DURATION

ONE YEAR FULL-TIME  
TWO YEARS PART-TIME

## HOW TO APPLY

APPLY DIRECT ON  
OUR WEBSITE

## COURSE LEADER

NATALIE STONES – MRes,  
PGCE, QTLS, BSc (Hons)

VALIDATED BY:



LEARN MORE  
ON OUR  
WEBSITE

## WHERE CAN I GO FROM HERE?

Masters graduates could progress to a career in equine research and performance analysis, equestrian training, lecturing, equestrian business and journalism or alternatively you may choose to progress to study at doctorate level.

## WHAT WILL I LEARN?

Master's Level modules are delivered by tutors qualified at postgraduate level in relevant subjects, many of whom have a strong British Horse Society (BHS) and performance horse background, most being research active.

The research project enables you to undertake a detailed experimental study in a chosen area to develop analytical research skills with the support of dedicated supervisors.

Interpretation and critical evaluation of current research findings will enable you to further develop links between the equestrian industry and the equine scientific community.

## ENTRY REQUIREMENTS

**BSc (Hons):** in a Science-related programme at 2:2 or above

## RESEARCH

Previous MSc research projects have included:

- The effect of Handedness and Footedness on Postural Asymmetries in Amateur Dressage Rider at Trot and Canter on a Simulator
- Contemplating the Five Domains: UK Horse Owner Perceptions of Equine Welfare
- The potential impact of female body shape on rider posture and scores received from dressage judges
- Equine (*Equus caballus*) social network construction within small domestic groups
- Exploring equine weight management and obesity-associated conditions from an industry professional and leisure stakeholder perspective.

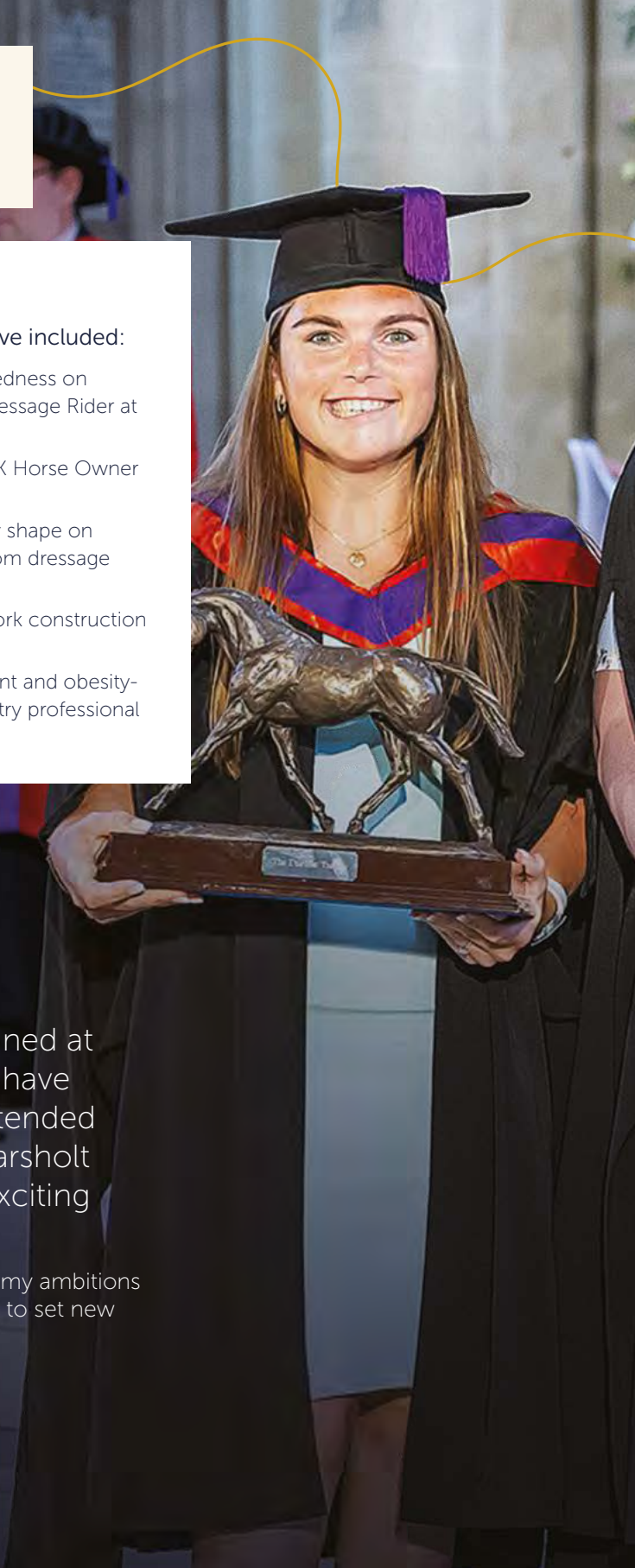


The qualifications I have gained at University Centre Sparsholt have enabled me to reach my intended career goal but being at Sparsholt opened my eyes to other exciting career paths too.

Not only has it allowed me to achieve my ambitions in lecturing, but it has also inspired me to set new goals for myself in the process.

## SOFIA

MSc Equine Behaviour,  
Performance and Training Graduate





# FISHERIES, AQUACULTURE & MARINE STUDIES

University Centre Sparsholt is recognised worldwide for its expertise in providing education in fishery, aquaculture and marine studies.

Our lecturing staff are known to be the experts in the industry and can often be found at conferences and industry forums discussing the latest techniques and their supporting research.

Students gain real industry experience on and off-site that is under-pinned by the high level of technical lecture content to prepare them for a range of careers or progression to courses at Master's and PhD level.

Our industry contacts enable great employment prospects. Owing to the success of the work experience, the majority of our students have secured industry relevant employment before they graduate.

FdSc Sports Fisheries and Aquaculture

Two years full-time

---

FdSc Marine Ecology and Conservation

Two years full-time at Sparsholt with the opportunity to top up to BSc (Hons) Marine Biology at the University of Portsmouth

---

BSc (Hons) Aquaculture and Fishery Management

Three years full-time with optional additional one year industry placement (sandwich year)

Top-up: one year full-time





## STUDENT STORY

### TOM

#### BSc (Hons) Aquaculture and Fisheries Management

I knew working within the environmental sector was what I desperately wanted to do, so when I found out about the courses at Sparsholt there was no looking back.

Sparsholt has an excellent reputation within the fisheries industry – people recommended it to me and I'd also read about it within magazines and online articles. A lot of well-known people within the industry have come from Sparsholt so being part of that feels very special.

The course was brilliant – I enjoyed every single day and would definitely recommend it. It covers many aspects of aquaculture and fisheries management, which helped to broaden my knowledge and experience and decide which route I wanted to take next. Having a small working group helped to get a better working relationship with the lecturers as well as classmates, and I feel gaining my qualification from Sparsholt really helped with the next steps when looking for full-time work.

I am currently working as a fisheries field scientist consultant at an environmental consultancy based in Stockport. A lot of my time is spent conducting fisheries surveys and fish rescues as well as lots of other aquatic ecology jobs all over the country, travelling to different locations each week. I learnt loads of skills on the course which have all been useful in my day-to-day job. Electrofishing, netting and fish husbandry are three skills I use most often, so gaining the prior theory and practical element of these has helped me massively within my working life.

Being able to turn a passion of mine into giving something back to the environment really means a lot.



# EMPLOYABILITY & INDUSTRY LINKS

University Centre Sparsholt is renowned as the leading provider in advanced education for the fishery and aquaculture industries regionally, nationally and internationally.

We were the first institution in the country to offer fishery studies and our graduates are now managers and scientists in this industry all over the world. Thanks to this heritage, our staff are often called on as the acknowledged experts in the field.

Our extensive industry links, the value of the Sparsholt 'name' in industry and the exciting and varied work placements you can undertake as a UCS student give you an unrivalled head start in the fishery and aquaculture industry.

You will benefit from our exceptional industry links as we work with organisations such as:

Institute of Marine Sciences at the University of Portsmouth

British Trout Association

Salmon & Trout Conservation

AquaBio Tech Group, Malta

Institute of Fisheries Management

Department for Environment, Food and Rural Affairs (Defra)

Ornamental Aquatic Trade Association (OATA)

Centre for Environment, Fisheries and Aquaculture Science (CEFAS)

KwaZulu-Natal Sharks Board

Environment Agency

Carp TV

Inshore Fisheries and Conservation Authorities (IFCAs)

British and Irish Association of Zoos and Aquariums (BIAZA)

DT Baits

Tetra

Aquarian

FishScience Ltd.

Neil Hardy Aquatica

Zoological Society of London (ZSL)

Sealife UK

Aquatic Animal Life Support Operators (AALSO)







# JOIN THE EXPERTS





## GEORGE HIDE

MSc, PGCE, BSc (Hons), FHEA

- Undergraduate at Swansea University and postgraduate at Plymouth University, completing an MSc in Applied Fish Biology
- Industry background in salmon and trout farming working for a large multinational salmon producer in Scotland, with brief spells in Canada and Chile
- Maintains extensive contacts with the UK aquaculture industry, in particular with commercial feed manufacturers
- Manages Sparsholt's fish trial facilities and involved in collaborative research into commercial salmonid, coarse and ornamental fish diets
- In 2018, awarded Hugh Jones Memorial Trophy for 'Distinguished Services to Aquaculture'
- Subject specialisms include fish health and welfare, with recent work auditing the welfare of farmed sturgeon in Azerbaijan.



## DR KERRY PERKINS

PhD, MSc, PGDipSci, BSc, FHEA

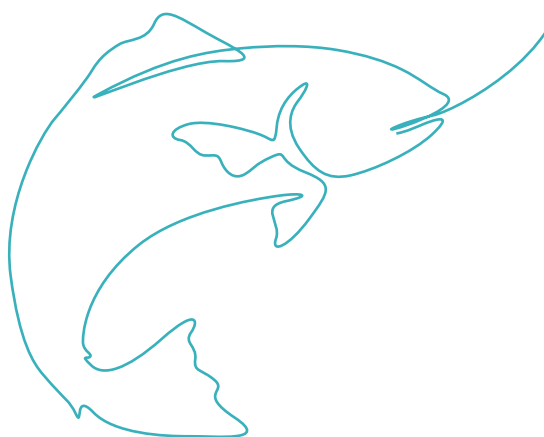
- Over 13 years' experience in the Aquarium industry working in New Zealand, USA and the UK
- Worked in unique research environments from diving under commercial mussel farms in New Zealand to sifting through museum collections in the UK
- Broad research interests from Life Support Systems in a commercial setting through to fish and invertebrate welfare
- Focus on cephalopod welfare and biology and has worked with the European Union on cephalopod research legislation.



## MARTIN KENT

BSc (Hons)

- Graduate of University Centre Sparsholt
- Worked at Reading & District Angling Association as an Assistant Fisheries Officer
- Worked at Aquamaintain Consultancy delivering projects such as river restoration tasks, stock assessments and wetland creation
- Worked at Action for the River Kennet (Rivers Trust) completing a variety of tasks such as river restoration, River clean ups, community engagement and educational activity
- Maintains extensive contacts with a variety of organisations within fisheries including the Environment Agency, The Institute of Fisheries Management, The National Trust and a number of local River Keepers and fishery owners.





## RESEARCH

As a UCS student you will be encouraged to undertake innovative and exciting research in our unique facilities as part of your course. Recent examples include:

- Testing different feed rates for maximum growth in carp
- Trialling a novel method of controlling the fish louse (*Argulus*) in a fishery
- Testing the effect of magnetic water on fish growth and pigmentation
- Assessing shell production in marine prawns
- Testing novel feed ingredients (fly larvae in carp diets)
- Assessing levels of plastic pollution in the sediments of the river Kennet
- Investigation into the Perception of Wild vs Farmed Fish by UK Consumer
- Optimising the feeding regime for trout fry Assessing the effects of different tank environments on the behaviour of Guppies
- An investigation into the effect of different commercial trout diets on the physical properties of trout faeces
- The effect of water quality on the development and viability of salmon ova.

## FACILITIES

### AQUATIC RESEARCH AND CONSERVATION CENTRE

Houses a range of exotic and warmwater aquatic species and is the only one of its kind in the UK

---

650m<sup>2</sup> purpose-built fish house

---

Holds stocks of carp, catfish, tilapia and an extensive range of ornamental species

---

Captive breeding programmes for endangered fish species working with international partners

---

Indoor koi pool

---

Research areas with replica tanks for student projects

---

Marine habitats that replicate a range of global ecosystems.

### SALMONID REARING AND TRIALS CENTRE

Purpose-built to train fish farmers of the future and undertake important aquaculture research. Research and development facility used by global leaders in fish food manufacture.

Produces brown trout for restocking local rivers and rainbow trout for the table. Includes a salmonid hatchery and ongrowing unit, lab and fish processing area and a trials unit with 72 tanks.

### LAKE

An exclusive mixed coarse fishery, stocked with carp, roach, rudd, bream, crucian carp, tench and perch.

Exceptional resource for teaching practical coarse fishery management and free recreational use for students studying fishery related courses.





## HEAD TO:

**[SPARSHOLT.AC.UK/ UNIVERSITY-CENTRE](https://sparsholt.ac.uk/university-centre)**

Explore our 183-hectare countryside campus from the comfort of your own home through images, videos and interactive tours.

Navigate through our virtual campus tour by scanning across the campus, zooming into and clicking on different areas, and exploring the wide variety of specialist buildings, equipment, and much more that Sparsholt has to offer!



LEARN MORE  
ON OUR  
WEBSITE

FdSc (Foundation Degree)

## SPORTS FISHERIES & AQUACULTURE

### WHY CHOOSE THIS DEGREE?

Focus on vocational learning and gain skills in subjects such as water quality, fish anatomy and physiology, aquaculture and fish health and nutrition.

Experience the industry through visits to fish farms and fisheries and research and collaborative projects.

Benefit from work placements in areas such as salmon farming, specimen carp fisheries, river keeping or even Jamaican tilapia farming.

Progress to final year of relevant BSc (Hons) programme after successful completion.

### CURRENT MODULES COVERED

#### LEVEL FOUR

Principles in Aquatic Science

Fishery Science

Industrial Experience

Water Quality

Introductory Fishery Management

Salmonid Aquaculture

Academic Skills

#### LEVEL FIVE

Tropical Aquaculture

Fish Health and Nutrition

Marine Fish Farming (Optional)

Aquarium Design and Husbandry (optional)

Fishery Appraisal

Financial Studies

Applied Industrial Research

Industrial Development

### DURATION

TWO YEARS FULL-TIME

### UCAS CODE

D439

### COURSE LEADER

GEORGE HIDE – MSc, PGCE,  
BSc (Hons), FHEA

VALIDATED BY:



LEARN MORE  
ON OUR  
WEBSITE

### HOW WILL I BE ASSESSED?

Assessment includes coursework (such as practical portfolios, laboratory reports, case studies and essay style assignments) in combination with formal examinations and group research projects.

### WHERE CAN I GO FROM HERE?

You can progress to the BSc (Hons) in Aquaculture and Fishery Management Top-up at University Centre Sparsholt; alternatively there are BSc programmes available at other universities.

Sparsholt students have also gained employment as sports fishery managers, fish farmers and fishery officers in the Environment Agency.



## WHAT WILL I LEARN?

The programme is designed to develop the practical, scientific and specialist skills needed by the fishery management and aquaculture industry. Subjects studied include water quality, fish anatomy and physiology, fishery management and ecology, aquaculture and fish health and nutrition.

You will also gain work experience in various industry sectors. Previous placements range from Scottish salmon farms, specimen carp fisheries in England, France and Spain and a tilapia farm in Jamaica to river keeping on local chalk streams, the London Aquarium, the Fish Disease Laboratory at Weymouth and bait manufacturers.

Study tours are embedded into the course at Level 4 and Level 5. They are a great opportunity to experience different vocational opportunities and other facilities.

## ENTRY REQUIREMENTS

**A Level:** Two A Level passes, including one at grade C or above which should be in a science

---

**BTEC Ext. Diploma:** MMP

---

**City & Guilds Advanced Technical Ext. Diploma (1080):**

MMP in a relevant pathway

---

**BTEC Diploma:** MM

---

**City & Guilds Advanced Technical Extended Diploma (720):**

MM in a relevant pathway

---

**T Levels:** Pass in a relevant subject

---

**Access to HE:** A satisfactory pass in a relevant Access course with 74 tariff points, with 24 credits at merit or above including 12 credits in science-based units

---

**International Baccalaureate:**

Appropriate IB Certificates considered

---

Plus GCSE Maths and English at grade 4/C or above or Level 2 Functional Skills in Maths and English.



FdSc (Foundation Degree)  
with option to progress  
to BSc (Hons) Marine Biology  
at the University of Portsmouth

# MARINE ECOLOGY & CONSERVATION

## WHY CHOOSE THIS DEGREE?

Gain the skills and experience needed for a variety of career opportunities in this growing sector.

Enhance your learning with work placements such as coral research and shark conservation both in the UK and abroad.

Experience the industry in depth by visiting UK and international fish farms, coastal sites and research centres.

Develop wide-reaching skills and knowledge in biological science – from physiology to ecology and evolution.

## CURRENT MODULES COVERED

Each year includes an assessed work placement unit

### LEVEL FOUR

Introduction to Marine Ecology

Principles in Aquatic Science

Marine Conservation

Industrial Experience

Introduction to Marine Fisheries Management

Academic Skills

## DURATION

TWO YEARS FULL-TIME AT SPARSHOLT FOLLOWED BY FINAL YEAR AT UNIVERSITY OF PORTSMOUTH

## UCAS CODE

CF17

## COURSE LEADER

DR KERRY PERKINS – PhD, MSc, PGDipSci, BSc, FHEA

VALIDATED BY:



LEARN MORE  
ON OUR  
WEBSITE

## LEVEL FIVE

Aquatic Ecology and Conservation

Population and Ecology

Marine Fish Farming (optional)

Aquarium Design and Husbandry (optional)

Marine Organisms and Ecosystems

Applied Industrial Research

Industrial Development

## HOW WILL I BE ASSESSED?

Assessment includes coursework (such as practical portfolios, laboratory reports, case studies and essay style assignments) plus formal exams. Research opportunities are also a feature, often enabling data collection within organisations such as the Inshore Fisheries Conservation Authority.

## WHERE CAN I GO FROM HERE?

After completing this course, you have the option to progress to the BSc (Hons) Top-up in Marine Biology at the University of Portsmouth for a third year of study or enter the industry. Sparsholt Graduates now work in national wildlife trusts and marine research.

## WHAT WILL I LEARN?

Marine ecology and conservation systems are studied in depth in this programme as you explore the impact of factors such as coastal developments, over-fishing, non-native species and worldwide climate change.

The course includes significant work experience in marine aquaculture, coastal fisheries, marine aquaria and research establishments both at home and abroad. Previous placements range from working in the Cornish Seal Sanctuary or for the Manta Trust in the UK, to shark and ray research in South Africa and Malta, whale and dolphin conservation in Tenerife, and Coral Cay Conservation in the Philippines.

## ENTRY REQUIREMENTS

**A Levels:** Two A Level passes, including one at grade C or above which should be in a science

**BTEC Extended Diploma:** MMP

**City & Guilds Advanced Technical Ext. Diploma (1080):**  
MMP in a relevant pathway

**BTEC Diploma:** MM

**City & Guilds Advanced Technical Extended Diploma (720):**  
MM in a relevant pathway

**T Levels:** Pass in a relevant subject

**Access to HE:** A satisfactory pass in a relevant Access course with 74 tariff points, with 24 credits at merit or above including 12 credits in science-based units

**International Baccalaureate:**  
Appropriate IB Certificates considered

Plus GCSE Maths and English at grade 4/C or above or Level 2 Functional Skills in Maths and English.



BSc (Hons)

# AQUACULTURE & FISHERY MANAGEMENT

## WHY CHOOSE THIS DEGREE?

One course that will develop you from introductory level in year 1 through to independent research and application in year 3.

Gain a wide range of practical experience and knowledge in subjects such as fish anatomy and physiology, business and environmental management and aquaculture.

Take part in work placements in places such as Fiji, South Africa or closer to home in Scotland. Be taught by leading industry experts in unrivalled on-site facilities.

## CURRENT MODULES COVERED

### LEVEL FOUR

Principles in Aquatic Science

Fishery Science

Industrial Experience

Introductory Fishery Management

Salmonid Aquaculture

Academic Skills

### LEVEL FIVE

Tropical Aquaculture

Fish Health and Nutrition

Marine Fish Farming (optional)

Aquarium Design and Husbandry (optional)

Fishery Appraisal

Financial Studies

Statistics and Research Methods

Industrial Development

## DURATION

THREE YEARS FULL-TIME WITH OPTIONAL ADDITIONAL ONE YEAR INDUSTRY PLACEMENT (SANDWICH YEAR).

ONE YEAR BSC TOP-UP ALSO AVAILABLE.

## UCAS CODE

FULL-TIME D480

TOP-UP D435

## COURSE LEADER

GEORGE HIDE – MSc, PGCE, BSc (Hons), FHEA

VALIDATED BY:



LEARN MORE  
ON OUR  
WEBSITE

### LEVEL SIX

Applied Fishery Science

Developments in Fish Production and Processing

Enterprise and Management

Environmental Management

Dissertation

Further Statistics

Professional Industrial Development

## HOW WILL I BE ASSESSED?

Assessment at level four and five is primarily by exams and coursework which includes practical portfolios, laboratory reports, case studies and essay style assignments. At level six there is a greater emphasis on group projects and independent research.

## WHERE CAN I GO FROM HERE?

You can move onto a MSc or PhD programme.

Sparsholt graduates now work as aquatic and fishery management consultants, in specialist angling publications, tackle and bait manufacturers, public aquaria, fisheries enforcement and product development, as lab and research technicians, in education and teaching and as fish farmers and fishery managers.

## WHAT WILL I LEARN?

The programme combines scientific, managerial and practical skills that are developed in a range of subjects such as water quality, fish anatomy and physiology, fishery management and ecology, aquaculture, fish health and nutrition, business and environmental management.

During the course there are also extensive periods of work experience. Recent placements have included carp fisheries in Spain and France, salmon farms in Tasmania and New Zealand, goldfish farms in the United States, Royal aquariums in the Middle East, research into ornamental fish welfare in the Philippines, Coral Cay Conservation in Fiji and research for the Natal Shark Board in South Africa.

Closer to home, University Centre Sparsholt has excellent links with potential placement destinations including public aquariums, coarse and game fisheries, government fishery laboratories and numerous fish farms.

## ENTRY REQUIREMENTS

**A Level:** Three A Level passes, including two at grade C or above, one of which should be in a science

---

**BTEC Ext. Diploma:** DMM

---

**City & Guilds Advanced Technical Extended Diploma (1080):**

DMM in an appropriate pathway

---

**BTEC Diploma:** N/A

---

**City & Guilds Advanced Technical Extended Diploma (720):** N/A

---

**T Levels:** Merit in a relevant subject

---

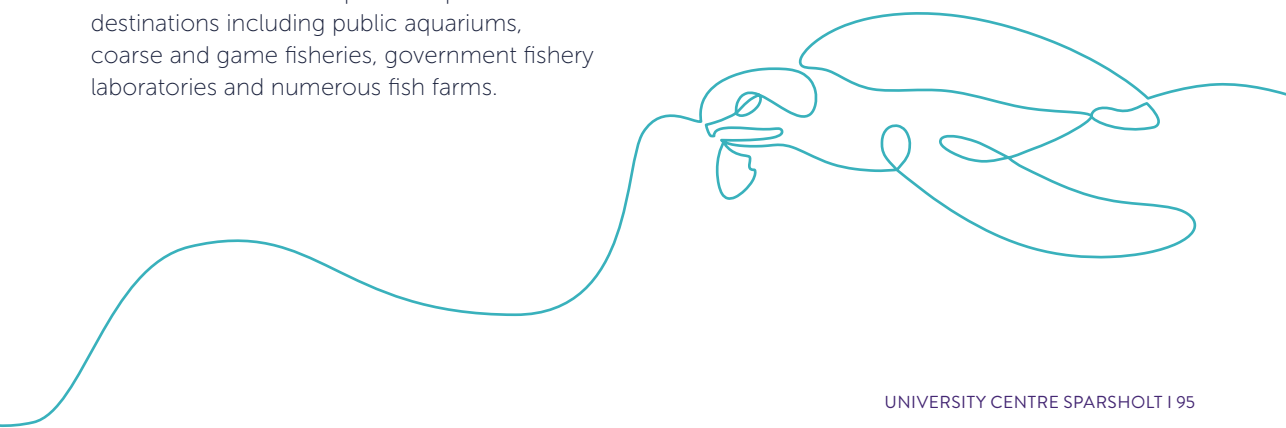
**Access to HE:** A Merit profile in a relevant Access course with 96 tariff points including a minimum of 15 credits at merit in science-based units

---

**International Baccalaureate:** 24 points with HL Science at 4

---

Plus GCSE Maths and English at grade 4/C or above or Level 2 Functional Skills in Maths and English.





# VETERINARY NURSING SCIENCE

University Centre Sparsholt has a very strong provision for teaching and training Veterinary Nurses. Our teaching staff bring experience and expertise in all areas of animal work including vet nursing, health and welfare work as well as animal training.

Our purpose built Veterinary Nursing Centre boasts radiology, consultation preparation and theatre rooms and is stocked with all the equipment veterinary nurses use on a daily basis. In addition, our Animal Health and Welfare Research Centre is stocked with a diverse and extensive range of animals that allows you to develop your practical animal handling and husbandry skills.

FdSc Veterinary Nursing Science

Three years full-time



Veterinary Nurse Standard Level 3 also available



LEARN MORE  
ON OUR  
WEBSITE



## STUDENT STORY

### JODIE

#### FdSc Veterinary Nursing Science Graduate

Prior to studying at University Centre Sparsholt, I had completed my A Levels and spent a gap year travelling. Following this, I volunteered at Wiltshire Wildlife Hospital helping sick or injured wildlife to be released back into the wild. This allowed me to further my passion for helping animals.

I decided to come to University Centre Sparsholt as a previous alumni had told me about the benefits of training at Sparsholt, including a wide range of facilities enabling extensive and varied learning, a variety of animals on site, and the convenience of location due to accessibility of travel routes. The structured timetable and lesson plan was also appealing to ensure appropriate study time alongside the course. This made it perfect for me to achieve my goals.

The Veterinary Nursing Centre was very appealing to enable me to get an idea of a clinical practice environment and learn the practical knowledge needed for veterinary nursing. The tutors were very supportive, with good communication ensuring 1-1 tutorials were provided if needed and plenty of exam and assignment support. Lastly, the course enabled me to meet many likeminded people, which was appealing to me starting a new career.

Sparsholt enabled me to learn a wide range of skills which prepared me for clinical practice as a veterinary nurse including: laboratory techniques, husbandry for a variety of species, anatomy, legislation in practice, diagnostic imaging, surgical theatre and anaesthesia knowledge, animal behaviour, pharmacology and infection and non-infectious diseases. This is required daily as a veterinary nurse so therefore this was a valuable part of the training.



# READY FOR INDUSTRY

A veterinary nursing course can lead you to a variety of fulfilling career paths, including veterinary nursing in general, specialist or referral practice; animal health and conservation; education; insurance for animal health companies; work for organisations and charities such as the RSPCA; teaching and research in Veterinary Nursing.



Students have completed clinical placements at organisations such as:

RSPCA

PDSA

Top Dog Hydrotherapy

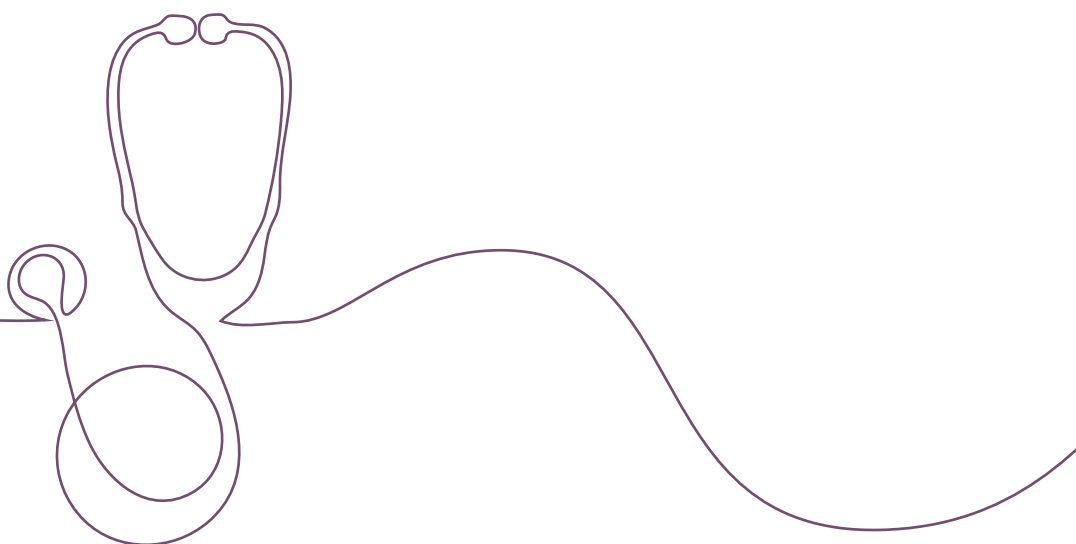
Community Farms

Fitzpatrick Referrals

Southern Counties Veterinary Specialists

Optivet Referrals

Companion Care







# JOIN THE EXPERTS



## FERN BROWN

FdSc RVN NcertECC

- FdSc in Veterinary nursing, Registered Veterinary Nurse
- Postgraduate certificate in Emergency and Critical Care from The International School of Veterinary Postgraduate Studies
- Experience in small animal general practice as well as large animal general practice, referral hospitals and locum work
- Interests include complex medical cases, emergency and critical care of patients as well as surgical nursing.



## JO GARRAWAY

MSc, BSc (Hons), Dip AVN, RVN, DTLLS, FHEA

- MSc Animal Welfare Science, Ethics and Law from University of Winchester, researching welfare assessment methods within canine assisted therapy
- RCVS Advanced Diploma in Veterinary Nursing, specialising in medical and critical care nursing
- BSc (Hons) in Veterinary Nursing and Practice Management
- Registered RCVS Veterinary Nurse with a diverse clinical experience in independent, orthopaedic referral and emergency small animal veterinary practice
- Currently working within emergency and critical care practice as a locum veterinary nurse
- Specific interests include companion animal welfare science, medical nursing, emergency and critical care.



## DR SARAH LAWSON

MA (Cantab), VetMB, MRCVS

- Lecturer in Veterinary Nursing Science and Animal Management
- MA (Cantab) and VetMB in Veterinary Medicine from the University of Cambridge
- Registered RCVS Veterinary Surgeon with a broad variety of experience in charity, independent and corporate small animal veterinary practice and an interest in surgery and diagnostic imaging
- Previously worked as an official veterinary surgeon at GBGB registered greyhound racing tracks.



## BEVERLEY LEWINGTON

RVN, DTLLS, A1, V1, PGDip  
Veterinary Physiotherapy

- Registered Veterinary Nurse
- Currently working towards a PGDip in Veterinary Physiotherapy at Nottingham University
- Runs own Veterinary Physiotherapy business treating predominantly canine and equine patients
- Lecturer in Veterinary Nursing Science and Animal Rehabilitation
- Worked in range of small animal veterinary practices
- Interests in Anatomy and Physiology; Rehabilitation; Medical Nursing to include supportive therapy techniques for Osteoarthritis patients; The prevention of injury in working dogs with the implementation of physiotherapy.



## REBECCA FEREDAY

FdSc, RVN

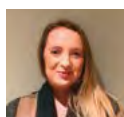
- FdSc in Veterinary Nursing Science, Registered Veterinary Nurse
- Has worked in a variety of different practices including referral centres
- Interests in inpatient care and EEC nursing.



## DAVID WHITE

NCertACC, RVN

- Postgraduate certificates in ECC and Anaesthesia and Critical care from the international school of veterinary postgraduate studies
- Certified engineer in anaesthetic medical equipment
- Interests in anaesthesia, soft tissue and interventional cardiac surgery
- Varied career including working in small and large animal practices as well as small animal multidisciplinary referral centres.



## EDEN GEARY

RVN Cert VN EC

- Studied in Australia and has a Certificate IV in Veterinary Nursing
- Further studies include the Vets Now ECC Certificate
- Currently progressing towards RVC Certificate of Advanced Veterinary Nursing in ECC
- Experience in first opinion, emergency and referral nursing
- Interests include ECC, intensive care nursing, analgesia and evidence-based veterinary nursing research.



## RESEARCH

You will be encouraged to undertake challenging and innovative research as part of your course.

Previous student projects include:

- A study in the geriatric information available to owners and its efficacy to aid osteoarthritic pain management
- Recent Research on Canine Neutering: Current Practice Protocols and if Veterinary Professionals' Knowledge Affects their Opinions
- Does Lack of Knowledge Impact an Owner's Perception of Maintaining Dental Hygiene for their dog?
- Do veterinary professionals and the general public perceive clinical signs of Brachycephalic Obstructive Airway Syndrome (BOAS) to be "Normal" for the Breed?

## FACILITIES

### Veterinary Nursing Centre

The facility is equipped to represent a contemporary veterinary practice which allows students to gain a realistic experience in a work setting with radiography, theatre and consultation facilities. Our students are able to use these facilities to relate their theory work to relevant practical elements of their future careers.

## FITNESS TO PRACTISE

Applicants for registration must demonstrate their fitness to practise through their conduct, health and performance.

The Royal College of Veterinary Surgeons' Code of Professional Conduct for Veterinary Nurses 2012 details the 'fitness to practise' requirements for Veterinary Nurses.

Professional Responsibilities 3.1 states that Veterinary Nurses must take reasonable steps to address adverse physical or mental health or performance that could impair fitness to practise; or, that results in harm, or a risk of harm, to animal health or welfare, public health or the public interest.





**VETERINARY NURSING SCIENCE  
STUDENTS TAKING THEIR PLEDGE  
AT WINCHESTER CATHEDRAL ON  
GRADUATION DAY.**

FdSc (Foundation Degree)

## VETERINARY NURSING SCIENCE

### WHY CHOOSE THIS DEGREE?

Three year full-time FdSc programme designed to meet RCVS Day One Competencies and Day One Skills for Veterinary Nurses.

1800 hours on clinical placement, working in collaboration with over 50 registered training veterinary practices.

Build vital industry experience through handling skills, clinical skill development, extensive work placements and strong links with industry.

Be eligible to register as a veterinary nurse upon graduation with excellent rates of employment.

### CURRENT MODULES COVERED

#### LEVEL FOUR

Analytical and Diagnostic Techniques

Animal Husbandry, Inheritance and Disease

Functional Anatomy

Industrial Experience

Practice Organisation and Personal Development Planning

Principles of Veterinary Nursing

#### LEVEL FIVE

Level 5 modules will be taught during the course of year 2 and 3

Application of Veterinary Nursing Care

Diagnostic Imaging

Pharmacology

Animal Behaviour

Applied Industrial Research

Recent Advances in Animal Health

Veterinary Nursing Clinical Skills.

### DURATION

THREE YEARS FULL-TIME

### UCAS CODE

D311

### COURSE LEADER

DR SARAH LAWSON –  
MA (Cantab), VetMB, MRCVS

### HEAD OF CENTRE:

JO GARRAWAY – MSc,  
BSc (Hons), Dip AVN, RVN, DTLLS,  
FHEA (Cantab), VetMB, MRCVS

VALIDATED BY:



LEARN MORE  
ON OUR  
WEBSITE

### HOW WILL I BE ASSESSED?

A wide range of assessment methods are used including written coursework, presentations, practical examinations and traditional written examinations. While you are working within the clinical environment, your progress will be monitored with practical competency assessments, designed to assess RCVS Day One Competencies and Day One Skills for Veterinary Nurses.

## WHERE CAN I GO FROM HERE?

Veterinary nursing is a diverse and satisfying career with many opportunities for registered veterinary nurses (RVN).

Following graduation, you will be able to work as a RVN within the companion animal profession in general practice. Students completing the FdSc are also given the prospect to continue their studies for a final year in a wide range of related BSc top up courses including BSc (Hons) Applied Animal Science, BSc (Hons) Applied Animal Behaviour or BSc (Hons) Zoo Biology, all of which are offered by University Centre Sparsholt.

The veterinary industry also presents increasing opportunities for veterinary nurses to work within patient rehabilitation, specialised referral hospitals, equine practices, the pharmaceutical industry, zoological/wildlife parks and in education

## WHAT WILL I LEARN?

The programme is designed to equip you for the veterinary industry, studying in a supportive environment with industry professionals. Throughout the course you will be taught a wide range of science based subjects, vital in developing your knowledge of companion animal nursing within diverse topics including anatomy and physiology, analytical techniques, professional skills of the veterinary nurse, anaesthesia, pharmacology and animal behaviour. You will learn through a combination of formal lectures, laboratory sessions, animal handling and clinical practicals, along with guided and independent study.

Work placements are key to your professional development and benefit from the University Centre's strong links to diverse organisations within the veterinary and animal professions. To meet RCVS clinical placement requirements you will spend a minimum of 1,800 hours in veterinary practice in a year placement.

We also offer students the chance to participate in optional overseas study tours such as the Shamwari Conservation Experience in South Africa and LAST Conservation in Costa Rica.

## ENTRY REQUIREMENTS

**A Level:** Three A Level passes, including two at grade C or above one of which should be in a science

**BTEC National Ext. Diploma:** DMM

**City & Guilds Advanced Technical Ext. Diploma (1080):**

DMM in an appropriate pathway

**BTEC National Diploma:** N/A

**City & Guilds Advanced Technical Extended Diploma (720):** N/A

**T Levels:** Pass in a relevant subject

**Access to HE:** A Merit profile in a relevant Access course with 96 tariff points including a minimum of 15 credits at merit in science-based units

**International Baccalaureate:** 25 points with HL Biology at 4. Good grades in MYP English, Maths, and Science

Plus five GCSEs at 4/C or above, including Maths, English and Science.

Two weeks' work experience in a Veterinary Surgery.



# WILDLIFE ECOLOGY & CONSERVATION

We have an enviable reputation for our work as we have run specialist Wildlife Ecology and Conservation courses since 1973.

The department has close working links with many of the major wildlife and conservation organisations and is recognised as a leading land-based institution in this field. Students benefit from our own 183-hectare estate that provides a managed rural environment.

This includes an ancient semi-natural woodland designated as a Site of Importance for Nature Conservation, a lake with reed-bed, a woodland shelterbelt with newly established woodland, recreated chalk grassland and a Game and Wildlife Centre that gives students practical industry skills alongside academic knowledge.

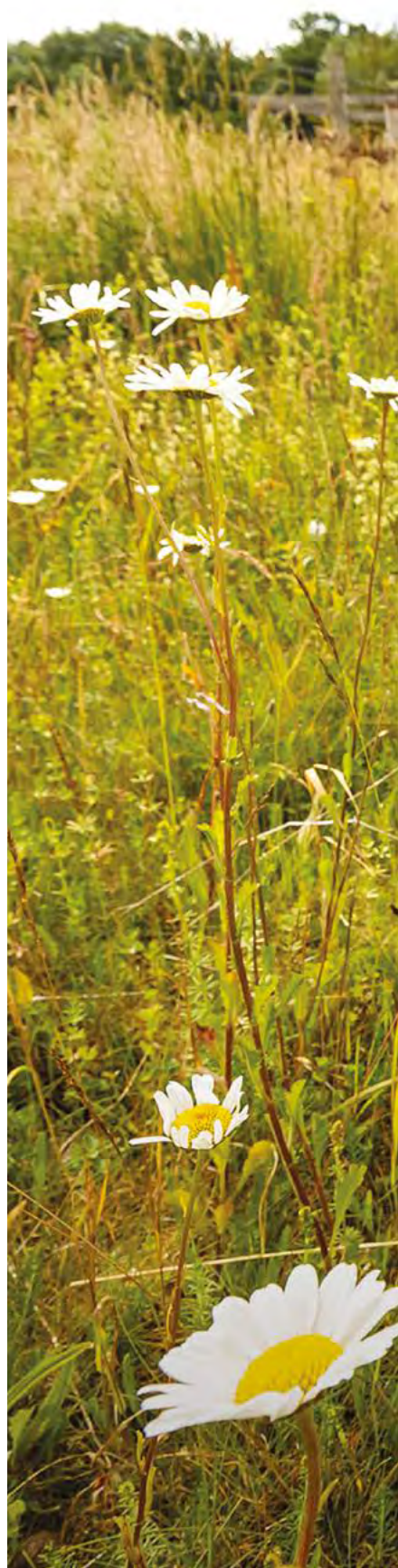
FdSc Wildlife Ecology and Conservation  
Two years full-time

---

BSc (Hons) Wildlife Ecology and Conservation  
Three years full-time with optional additional one year industry placement (sandwich year)  
Top-up: one year full-time



LEARN MORE  
ON OUR  
WEBSITE







# READY FOR INDUSTRY

Our tutors have practical experience and qualifications relevant to their particular specialism as well as staying actively involved in the study and management of ecology, the environment, wildlife, conservation, game and the countryside. Their contacts and experience will open the doors to your career in the ecology industry.

We have also established close links with a range of landowners and conservation organisations throughout the country and have unprecedented access to a wide variety of sites, so that students can experience a diversity of wildlife, habitats and their management first hand. Site visits and presentations given by visiting speakers with specific expertise are integrated into our courses, giving you a valuable insight into the industry before you join it.

We work with organisations such as:





## STUDENT STORY

### DAISY

#### BSc Wildlife Ecology and Conservation

I started studying ecology at a larger, city-based university but quickly realised that the course wasn't best suited for me – I needed a course that had a strong focus on practical skills and British wildlife.

I hadn't realised how extensive University Centre Sparsholt is – I was so impressed by the facilities and the range of modules on offer. Immediately, I could see that the course was structured not only in a way that helps you to reach your academic potential, but also improves key skills needed for employment.

A massive advantage of Sparsholt is the small class sizes, which allow students to get to know their classmates and lecturers really well, helping academic and personal progression. The practical element of the course gives graduates a massive advantage as well as helping to build confidence. The lecturers were also so helpful, knowledgeable, and perhaps most importantly – friendly!

The facilities are fantastic. Having such a large, rural campus meant that I could develop practical skills such as making a boardwalk, hedge laying and coppicing. It was also ideal to be able to step outside the lecture room and be in the heart of the stunning Hampshire countryside to undertake surveys as well as visit so many local sites (including farms, woodlands, and heathland) and put our skills to good use.

One of the biggest advantages of being a Sparsholt graduate is that I was given the chance to really nurture my passions and develop specific knowledge about the species in the UK. This played a big role in helping me to land a job working for my dream organisation, Dorset Wildlife Trust. It's fantastic to be working for an organisation whose goals and ambitions align so closely with content taught on the course and I'm learning new things every day.



# JOIN THE EXPERTS





### DR CLAIRE CRESSWELL

PhD, MSc, BSc (Hons)

- Specialist research interests include agricultural ecology, plant-invertebrate interactions, water quality protection, avian behavioural ecology and monitoring
- Holds a BSc (Hons) in Animal Science and an MSc in Wildlife Management and Conservation from University of Reading
- PhD from Harper Adams University investigated the role of multifunctional field margin vegetative strips for the support of ecosystem services.



### NICOLA EDWARDS

MSc, PGCE, BSc (Hons), SFHEA

- Holds a BSc (Hons) in Wildlife Conservation and an MSc in Environmental Management for Agriculture as well as qualifications in teaching, applied biology and veterinary nursing. Varied experience including work on conservation management and wildlife rescue projects
- Teaches academic skills and science as well as a range of ecological topics
- External Examiner working with several universities to verify assessment on animal science and conservation degrees.



### DR MATTHEW TALLIS

PhD, MSc, BSc (Dual Hons)

- BSc (Dual Hons) in Biochemistry and Physiology (University of Sheffield) an MSc in Environmental Science (University of Aberdeen) and a PhD investigating the effects of climate change on tree growth and function (University of Southampton)
- Specialist research has been published in high quality academic journals and includes topics such as tree responses to climate change, urban vegetation and pollution, and the role of biomass in sustainable energy production
- Interests include education and the natural world, the influence of human societies on the natural world and especially all things related to trees.



### DR OLUWADUNSIN ADEKOLA

PhD, MSc, MTech, BTech (Hons)

- Specialist research interests include avian ecology and monitoring, conservation education, citizen science, invasive species, bioacoustics, moult strategies and feather quality
- Holds a BTech (Hons) in Ecotourism and Wildlife Management (Federal University of Technology, Akure (FUTA), an MSc in Conservation Biology (AP Leventis Ornithological Research Institute, University of Jos), and MTech in Wildlife Ecology and Management (FUTA)
- PhD from the University of Cape Town explored how large birds balance moult with other aspects of their annual cycles and if moult may be used as an index of condition and ultimately as an indicator of fitness in birds.



## FACILITIES

The college estate offers doorstep access to a diversity of habitat types within the Hampshire countryside and is readily utilised as an open classroom for Wildlife Ecology and Conservation. This includes a semi-natural ancient woodland (with management activities), ponds and reedbeds, chalk scrapes, wildflower areas, and monitoring for small mammals, reptiles, a nationally important butterfly transect survey, ongoing developments with our status as a Hedgehog Friendly Campus, and a collection of many state-of-the-art tools and techniques to support such work.

Of course, we are not limited to this; Wildlife Ecology and Conservation accesses many active local, regional, and national ecology and conservation sites, employers, research institutes and expertise. Beyond this, students are encouraged to participate with campus, college, and University Centre environment policies and our in-house Sustainability Strategy and Green Group.

There are a wide range of species recorded on site including Slow worms, Common lizard, Small blue butterfly, Common blue butterfly, Marsh tit, Goldcrest and ancient woodland indicators such as Solomon's seal and Ramsons. We also worked with an ecological consultancy to translocate a slow worm population onto the site.



## RESEARCH

Use our extensive facilities as you get involved in research projects such as:

- Long term UK Butterfly Monitoring Scheme.
- Ongoing capture mark and release to monitor local bird populations on site.
- Investigating the influence of hedgerow management on aspects of biodiversity.
- Exploring features of rewilding including public perception.
- Investigations into wildlife literacy in education.
- Investigating interactions between urban air pollution and vegetation.



## HEAD TO:

**[SPARSHOLT.AC.UK/](https://sparsholt.ac.uk/) UNIVERSITY-CENTRE**

Explore our 183-hectare countryside campus from the comfort of your own home through images, videos and interactive tours.

Navigate through our virtual campus tour by scanning across the campus, zooming into and clicking on different areas, and exploring the wide variety of specialist buildings, equipment, and much more that Sparsholt has to offer!



LEARN MORE  
ON OUR  
WEBSITE

FdSc (Foundation Degree)

## WILDLIFE ECOLOGY AND CONSERVATION

### WHY CHOOSE THIS DEGREE?

To gain the skills the industry needs (both academic and practical) through work-related learning.

Expert lecturers with local and national links sharing current industry contacts.

Choose to progress on to a BSc Top-up course to continue your studies after successful completion.

Join us and work alongside a team of passionate, multidisciplinary, experienced lecturers with an excellent reputation, close links with a wide variety of potential employers and unprecedented access to a wide variety of sites.

### CURRENT MODULES COVERED

#### LEVEL FOUR

Global Ecosystems

Fundamentals in Science

Industrial Experience

Habitat and Species Identification

Academic Skills

Introductory Ecology

#### LEVEL FIVE

Conservation Legislation and Policy

Applied Industrial Research

Conservation Land Management

Applied Ecology

Field Ecology Techniques

Industrial Development

### DURATION

TWO YEARS FULL-TIME

### UCAS CODE

C18M

### COURSE LEADERS

DR CLAIRE CRESSWELL –  
PhD, MSc, BSc (Hons)

NICOLA EDWARDS –  
MSc, PGCE, BSc (Hons), SFHEA

DR MATTHEW TALLIS –  
PhD, MSc, BSc (Dual Hons)

DR OLUWADUNSIN ADEKOLA –  
PhD, MSc, MTech, BTech (Hons)

VALIDATED BY:



LEARN MORE  
ON OUR  
WEBSITE

### HOW WILL I BE ASSESSED?

Final and in-session assessment will allow you to develop research and study skills as well as technical and expert knowledge.

Assessments include written assignments, presentations, project and lab reports, practical based and online portfolios and examinations.

### WHERE CAN I GO FROM HERE?

You can continue your studies with our BSc (Hons) Top-up programme, or enter industry. Many of our graduates use their skills to start a business or to work in wildlife conservation or consultancy with NGOs (Non-Government Organisations) such as The Wildlife Trusts or government bodies such as Natural England.

## WHAT WILL I LEARN?

The programme brings a scientific approach to the management of plant and animal communities through investigation of ecological and scientific concepts. You will also explore legislative, financial and planning processes to gain a truly integrated understanding of wildlife conservation. Identification, sampling and monitoring of wildlife and sites is applied and supported by field trips each year.

Our strong links with landowners mean you will enjoy access to a wide range of sites as well as the University Centre Sparsholt's own excellent resources.

Work-related learning is key, so you will also gain practical experience and contacts with a variety of organisations through visits, guest speakers and work placements.

## ENTRY REQUIREMENTS

**A Level:** Two A Level passes, including one at grade C or above one of which should be in a science

**BTEC Ext. Diploma:** MMP

**City & Guilds Advanced Technical Ext. Diploma (1080):**

MMP in an appropriate pathway

**BTEC Diploma:** MM

**City & Guilds Advanced Technical Extended Diploma (720):**

MM in an appropriate pathway

**T Levels:** Pass in a relevant subject

**Access to HE:** A satisfactory pass in a relevant Access course with 74 tariff points, with 24 credits at merit or above including 12 credits in science-based units

**International Baccalaureate:**

Appropriate IB Certificates considered

Plus GCSEs in Maths and English at grade 4/C or above or Level 2 Functional Skills in Maths and English.



BSc (Hons)

## WILDLIFE ECOLOGY AND CONSERVATION

### WHY CHOOSE THIS DEGREE?

Develop ecological expertise through research, surveying and data collection, and conservation management planning.

Learn on the 183-hectare College estate with an active conservation management plan and a varied managed rural environment.

We are living in a period of unprecedented planetary change. The climate is changing, and global biodiversity is crashing at such a rate we may be in the sixth mass extinction of our planet. Would you like to understand the current and emerging science in the fields of sustainability, conservation and ecology that can make a positive difference and develop the knowledge, skills and networks for employment? Join us and work alongside a team of passionate, multidisciplinary, experienced lecturers with an excellent reputation, close links with a wide variety of potential employers and unprecedented access to a wide variety of sites.

### CURRENT MODULES COVERED

#### LEVEL FOUR

Global Ecosystems

Science Foundations

Industrial Experience

Habitat and Species Identification

Introductory Ecology

Academic Skills

#### LEVEL FIVE

Conservation Legislation and Policy

Statistics and Research Methods

Conservation Land Management

Applied Ecology

Field Ecology Techniques

Industrial Development

### DURATION

THREE YEARS FULL-TIME WITH  
OPTIONAL ADDITIONAL ONE  
YEAR INDUSTRY PLACEMENT  
(SANDWICH YEAR).

ONE YEAR BSC TOP-UP  
ALSO AVAILABLE

### UCAS CODE

FULL-TIME C185

### COURSE LEADERS

DR CLAIRE CRESSWELL –  
PhD, MSc, BSc (Hons)

NICOLA EDWARDS –  
MSc, PGCE, BSc (Hons), SFHEA

DR MATTHEW TALLIS –  
Phd, MSc, BSc (Dual Hons)

DR OLUWADUNSIN ADEKOLA –  
PhD, MSc, MTech, BTech (Hons)

VALIDATED BY:



LEARN MORE  
ON OUR  
WEBSITE

#### LEVEL SIX

Dissertation

Landscape Ecology and Geographic  
Information Systems

Sustainable Resource Management

Project and Site Management

Global Biodiversity

Professional Industrial Development

Further Statistics

## HOW WILL I BE ASSESSED?

Final and in-session assessments feature in this programme, allowing you to develop research and study skills as well as technical and expert knowledge. Assessments include completion of a research dissertation, written assignments, presentations, project reports, practical based and online portfolios and examinations.

## WHERE CAN I GO FROM HERE?

You can progress onto postgraduate study, gain employment with conservation organisations or use your skills to run your own business. Sparsholt graduates now hold positions in wildlife conservation and consultancy, with government bodies such as Natural England and with NGOs (Non-Governmental Organisations) such as the RSPB.

## WHAT WILL I LEARN?

You will develop the expertise to understand and evaluate the current and emerging science in global planetary change, natural resource management, ecosystem services, wildlife conservation and sustainability, all embedded within the theme of applied ecological science.

You will develop the skills to analyse and monitor diverse ecosystems in the field and design and effectively implement management plans for wildlife conservation. You will also develop skills for employment as well as numerical, digital, qualitative, and quantitative techniques to understand planetary changes and contribute positively to conservation and sustainability.

Our strong links with external experts, research groups and landowners mean you will enjoy access to a wide range of interdisciplinary expertise and appropriate field sites as well as University Centre Sparsholt's own excellent resources. You will gain practical experience and contacts with a variety of organisations through visits, guest speakers and work placements to build networks for future employment.

## ENTRY REQUIREMENTS

**A Level:** Three A Level passes, including two at grade C or above one of which should be in a science

**BTEC Ext. Diploma:** DMM

**City & Guilds Advanced Technical Ext. Diploma (1080):**

DMM in an appropriate pathway

**BTEC Diploma:** N/A

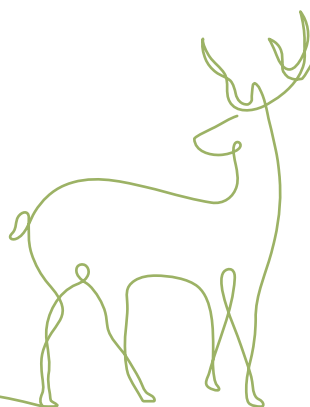
**City & Guilds Advanced Technical Extended Diploma (720):** N/A

**T Levels:** Merit in a relevant subject

**Access to HE:** A satisfactory pass in a relevant Access course with 96 tariff points including a minimum of 15 credits at merit in science-based units

**International Baccalaureate:** 24 points with HL Science at 4

Plus GCSEs in Maths and English at grade 4/C or above or Level 2 Functional Skills in Maths and English.



# HIGHER & DEGREE APPRENTICESHIPS

## SO WHAT IS A HIGHER/DEGREE APPRENTICESHIP?

All apprenticeships offer the chance to integrate study and work in a programme designed to equip you with the practical skills for a working role alongside the underpinning academic knowledge to give you a well-recognised and respected qualification. So you get to learn, earn and certify your skills all in one!

Higher Apprenticeships follow the same rigorous framework but take your qualification to a higher level – pathways are available from Level 4 all the way to Master's at Level 7. As an Apprentice you will be assessed throughout your course and finally you will complete an End Point Assessment to test both your academic learning and your occupational competence – both of which will have been developed through your training. Higher Apprenticeships can last from 18 months to five years depending on your chosen pathway.

## HOW DO YOU BECOME AN APPRENTICE?

Being an apprentice means you will be employed in the relevant industry before you start your apprenticeship. You will need to find employment and you can do this in a number of ways:

- Speak to our dedicated team who have excellent links with local and national employers
- Visit the 'Find an Apprenticeship' website to locate a vacancy in your area
- Contact local companies to see whether they have any apprenticeship opportunities.

## WHY CHOOSE UCS FOR YOUR APPRENTICESHIP?

An Apprenticeship from University Centre Sparsholt will give you a wealth of practical experience, skills and knowledge delivered by the combined power of the academic team at UCS and the Sparsholt College Group Apprenticeships Team.

We have an established track record in the areas of animal science and the natural environment at degree level going back decades and the facilities on our 183-hectare campus and in our Animal Health and Welfare Research Centre are outstanding. Our extensive links with a host of excellent employers in these sectors mean you will have a fully rounded and valuable apprenticeship experience.



LEARN MORE  
ON OUR  
WEBSITE

# HIGHER APPRENTICESHIP COUNTRYSIDE RANGER LEVEL 4

## OVERVIEW

This occupation is found in organisations responsible for managing the countryside, natural environment, community engagement and public access.

## WHAT GRADES WILL I NEED?

Two A Level passes, including one at grade C or above which should be in a relevant subject OR Level 3 Extended Diploma in a relevant subject at Merit OR Distinction grade Level 2 Countryside Worker Apprenticeship Plus GCSEs in Maths and English at grade C/4 or above or Level 2 Functional Skills in Maths and English.

## AT A GLANCE

The broad purpose of the role is the daily management, maintenance, conservation, and protection of the natural environment, to inspire people about the natural environment and encourage them to engage with their local green spaces.

## HOW LONG WILL THE COURSE TAKE?

Typically, this will take you circa 2 years to complete, working 4 days per week and coming in to college the equivalent of one day per week.

## WHAT JOB ROLES WOULD A COUNTRYSIDE RANGER HIGHER APPRENTICE BE IN?

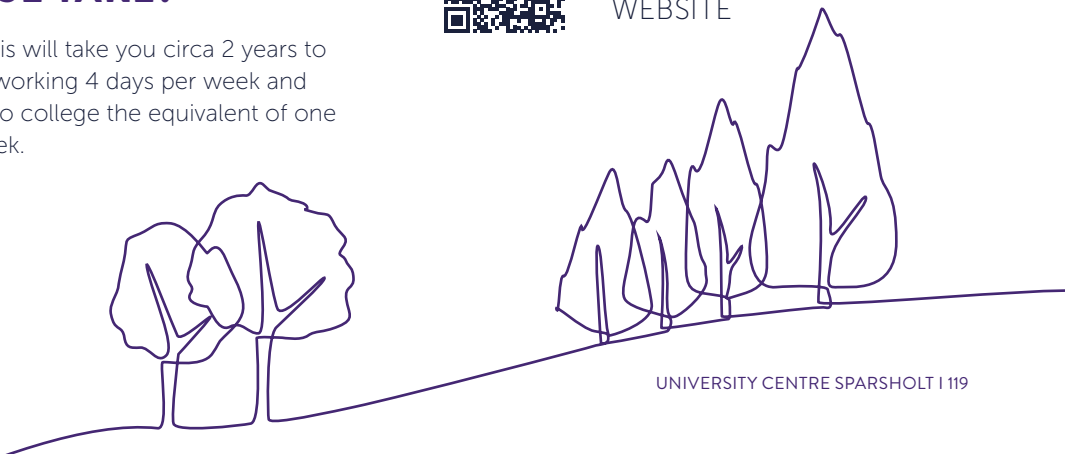
Typical job roles include Community Ranger, Countryside Ranger, Estate Ranger, Estate Supervisor, Park Ranger, Recreation Ranger, Wildlife Reserve Officer or Countryside Warden.

## WHAT WILL I LEARN?

The apprenticeship will cover a wide range of knowledge and skills which will include the following; ecology of the main UK ecosystems, practical and technical land and habitat management techniques, current legislation relating to health and safety and the workplace, key UK environmental legislation and associated funding streams, relevant planning regulation and legal processes, land use and habitat and project plans, training and managing a team of staff and volunteers, survey techniques and interpretation of survey data, public engagement through environmental interpretation and information provision.



LEARN MORE  
ON OUR  
WEBSITE



# DEGREE APPRENTICESHIP ECOLOGIST LEVEL 7

## OVERVIEW

An ecologist studies the relationships between living things and their environment to help to resolve potentially conflicting demands between economic development and the health of the environment. The Level 7 Ecologist Degree Apprenticeship is designed to provide an accessible work-based learning route as an alternative to a traditional degree model.

## WHAT GRADES WILL I NEED?

An honours degree (upper 2nd class or higher) or significant prior experience and evidence of competence in English and Maths. Apprentices without a minimum Level 2 qualification in English and Maths will need to achieve this level prior to end-point assessment. Individual employers will set the selection criteria for their apprentices.

## AT A GLANCE

Landscape Ecologists work in a wide range of organisations including, Local Authorities or Non-Governmental Organisations (NGO), using ecological and other data to develop strategies and policies. A Consultant Ecologist or Ecological Scientist may work in a specialist ecological consultancy or for large organisations, such as civil engineering companies, proposing innovative ideas and solutions.

## HOW LONG WILL THE COURSE TAKE?

Typically, this will take you 30-36 months to complete, working 4 days per week and coming in to college for the equivalent of one day per week.

## WHAT JOB ROLES WOULD AN ECOLOGIST DEGREE APPRENTICE BE IN?

Typical roles include work in a wide range of organisations including, ecological consultancy, local authorities, NGOs, government agencies, and research. Graduates may be able to progress to more senior roles with their employer and be prepared to undertake a PhD.

## WHAT WILL I LEARN?

The apprenticeship has three routes, ecological consultant, ecological scientist, and landscape ecologist. At the end of the apprenticeship, you will have gained a Level 7 "Master's" qualification which will include taught elements covering topics such as conservation and sustainability, biodiversity conservation and analytical methods for ecologist A research project, completed in the final year of the apprenticeship, provides an opportunity for apprentices to focus on an area of interest shared with their employer.



LEARN MORE  
ON OUR  
WEBSITE



# NEW ONLINE SHORT COURSES

University Centre Sparsholt have developed a number of standalone online courses for those that share our passion for promoting sustainability in our everyday lives. These courses provide a flavour of the topics we study at UCS and can be accessed via **em3.isvc.co.uk**

## **LEVEL 4 INTRODUCTION TO SUSTAINABLE RESOURCE MANAGEMENT**

This short course introduces the concepts of sustainability, the impact of excessive resource use on our planet and how land-based individuals and businesses can start to review their current position on sustainable resource management.

## **LEVEL 4 NEXT STEPS IN SUSTAINABLE RESOURCE MANAGEMENT USING NATURE BASED SOLUTIONS**

This course builds upon the introduction to sustainable resource management and looks in more detail at the natural resources such as air and water that land-based businesses and individuals utilise and the impact on ecosystems, bio-diversity and carbon sequestration.

## **LEVEL 5 PUTTING SUSTAINABLE RESOURCE MANAGEMENT INTO PRACTICE**

This course takes your knowledge and understanding further and explores how land-based businesses might start to implement sustainable resource management with a more detailed consideration of the underlying theories of change management and applying a more holistic approach to resource use.



LEARN MORE  
ON OUR  
WEBSITE

# PRACTICAL SHORT COURSES

We also offer a huge variety of part-time short courses for adults including Introduction to Bat, Dormouse and Newt Ecology and Survey Techniques – 6-hour courses which can lead to commencing the fieldwork required to gain a relevant survey licence. Find out more at **sparsholt.ac.uk**

# HOW TO **APPLY**



## UCAS

### **FULL-TIME UNDERGRADUATE COURSES**

FdSc | BSc and BSc Top-Ups

Apply through UCAS online at  
**[www.ucas.com](http://www.ucas.com)**

Institution code: **S34**

If your application has been successful, you will be made an offer. You will then be invited to an Offer Holders' Welcome Day in Spring. You will experience 'a day in the life' of a UCS student by going to a sample lecture and taking part in a practical research session, all led by our expert team. You can also talk through your course choice in more detail and get answers for any questions you might have.

## UNIVERSITY CENTRE **SPARSHOLT**

### **PART-TIME UNDERGRADUATE COURSES**

FdSc | BSc

### **ALL POSTGRADUATE COURSES**

MSc

Apply direct at  
**[www.sparsholt.ac.uk/university-centre](http://www.sparsholt.ac.uk/university-centre)**

If you receive a conditional or unconditional offer you will also be invited to an Offer Holders' Welcome Day in Spring.





## STUDENT FINANCE

England [www.gov.uk/student-finance](https://www.gov.uk/student-finance)

Scotland [www.saas.gov.uk](https://www.saas.gov.uk)

Wales [www.studentfinancewales.co.uk](https://www.studentfinancewales.co.uk)

Northern Ireland [www.studentfinancenir.co.uk](https://www.studentfinancenir.co.uk)

EU [www.gov.uk/apply-for-student-finance](https://www.gov.uk/apply-for-student-finance)

## INTERNATIONAL STUDENTS

Please visit our website for further details. You may need a visa to come to the UK to study, to check visit: [www.gov.uk/check-uk-visa](https://www.gov.uk/check-uk-visa)

# FINANCE AND FEES

The information provided here is for academic year 2024/25. Students are advised to confirm the situation at time of application by referring to the website or checking with the Admissions team, [degrees@sparsholt.ac.uk](mailto:degrees@sparsholt.ac.uk)

## TUITION FEES

Full-time Higher Education Courses (commencing September 2025).

All undergraduate students are required to pay an annual tuition fee, however if you are a UK undergraduate you are eligible for a student tuition fee loan to cover the cost of fees. The Government pays the tuition fee directly to UCS so no money passes through your bank account.

You do not have to pay back the loan and interest until you're earning. If you leave your course early you would need to repay a percentage of the tuition fee loan for that year.

### Access to Higher Education (Land-based studies)

Students aged 19 or over are required to pay a tuition fee. Students aged 19–23 who do not hold a full level 3 qualification or who have an EHCP may be exempt, or if a UK national you may be eligible for an Advanced Learner Loan.

Please visit [gov.uk/advanced-learner-loan](https://www.gov.uk/advanced-learner-loan) for further information.

## INTERNATIONAL STUDENTS

If you have not lived in the European Union(including UK) for three years prior to the start of your course, you will have to pay international fees. If you are not a UK national it is likely that you will need to apply for a student visa.

You must be over the age of 18 to study at University Centre Sparsholt and you must have a minimum IELTS score of 6. For further information about courses, applications, entry requirements, international fees and visas, please email [degrees@sparsholt.ac.uk](mailto:degrees@sparsholt.ac.uk)

## ANNUAL COURSE FEES FOR UK/EU

Full-time	
Access to HE	<b>£5,760</b>
FdSc and BSc programmes (except FdSc Veterinary Nursing Science)	<b>£9,000</b>
FdSc Veterinary Nursing Science	<b>£6,800</b>
MSc programmes	<b>£7,500*</b>
Part-time	
BSc Top-up programmes	<b>£4,625</b>
MSc programmes	<b>£3,750*</b>

\*A 10% discount for Sparsholt BSc Graduates directly progressing.

## ACCOMMODATION FEES

Sparsholt self-catering accommodation	<b>£5,561</b>
The University of Winchester Burma Road Halls	<b>£5,561</b>

## ANNUAL COURSE FEES FOR INTERNATIONAL STUDENTS

Full-time	
All courses (excluding MSc)	<b>£13,000</b>
FdSc Veterinary Nursing	<b>£8,666</b>
MSc programmes	<b>£9,250*</b>

\*A 10% discount applies for progressing Sparsholt BSc Graduates.

Please note fees for 2025 have not yet been set, the information above shows the fees for 2024 as a guide. The new fee schedule will be updated online at [sparsholt.ac.uk/university-centre](https://www.sparsholt.ac.uk/university-centre)

# ADDITIONAL COSTS

ESTIMATED COST (AS AT FEB 2023)	PERSONAL PROTECTIVE EQUIPMENT (PPE) AND COURSE SPECIFIC EQUIPMENT	PRINTING POSTERS	ADDITIONAL TRIPS, STUDY TOURS AND VISITS  (the cost of compulsory trips, study tours and visits that link directly to assessment are covered by tuition fees)
AGRICULTURE	£100 (basic)	£30–£50	£200–£500 (optional UK/overseas field trips)
ANIMAL SCIENCE AND ZOO BIOLOGY	£80	£30–£50	£2,500 (optional study tours overseas)  £600 (optional European study tour)
EQUESTRIAN SCIENCE AND PERFORMANCE MANAGEMENT	£200 PPE  £100 University Centre Sparsholt Equine Centre Uniform (discount pack, items can be purchased separately from £20)	£30–£50	£600 (optional international study tour)  £50 (optional off site visits not directly linked to assessment)
FISHERY, AQUACULTURE AND MARINE STUDIES	£100 (basic)  £400 (high quality)	£30–£50	£200 (optional study tour overseas)
VETERINARY NURSING SCIENCE	£130	£30–£50	£2,000 (optional study tour overseas)
WILDLIFE ECOLOGY AND CONSERVATION	£100 (basic)	£30–£50	£200–£700 (optional UK/overseas field trips)

## Personal IT device for use at University Centre Sparsholt

If you are considering upgrading or buying a new IT device to use whilst studying at UCS, we recommend the following as a minimum specification.

**Operating System:** Windows 8.1 or Windows 10 RAM\*: 64-bit systems: 4 GB of memory or more recommended.

**Processor:** Intel® Pentium® 4 or AMD Athlon™ Dual Core, with SSE2 technology.

**Hard Disk Space:** 2 GB (minimum) free space available Screen Resolution: 1024 x 768 or higher.

**Connectivity:** An internet connection is required for activation of trial and single-user licenses.

**Browser:** A web browser is required for accessing subject specific software. Chrome or Chromium Edge is recommended.

**Additional required software will be installed with the application:** Microsoft Visual C++ Redistributables for Visual Studio 2019.

These guidelines are provided to aid your decision making when purchasing new equipment. If you already own a personal device that does not meet these minimum requirements, it may not be necessary to replace it as there may be alternative ways to access the software and learning resources that you will use during your studies.

# FINANCIAL SUPPORT

## MAINTENANCE LOANS FOR UNDERGRADUATE STUDENTS

There is a maintenance loan available to help with living costs such as rent.

You do not have to pay back the loan and interest until your course is finished and you are earning. UCS is required to confirm your attendance/enrolment with the Student Loan Company before Maintenance loans can be released – so any payments will be received roughly a week after enrolment.

Find out more about how much you may be entitled to by visiting [gov.uk/studentfinance](https://www.gov.uk/studentfinance) where there is a calculator you can use to check your eligibility.

---

## POSTGRADUATE LOANS

If you start a full-time or part-time master's course after 1 August 2023 you can apply for a Postgraduate Loan. You'll be able to borrow up to **£12,167** to pay your fees and help with living costs. To find out if you're eligible for this loan, please visit [gov.uk/funding-for-postgraduate-study](https://www.gov.uk/funding-for-postgraduate-study)

---

## RECOGNITION OF PRIOR LEARNING (RPL) OR ACCREDITATION OF PRIOR LEARNING (APL)

If you have work experience or previous qualifications relevant to your chosen course, you may be entitled to an exemption from part of your course allowing you to complete your programme more quickly.

If you feel that this is relevant to you and you would like to apply for this accreditation, you will need to discuss your previous experience and qualifications with a tutor at the interview stage. The tutor will then be able to evaluate your previous experience and the extent of likely accreditation.

All RPL or APL must be agreed and validated by the University of Portsmouth before your course commences.

## UNIVERSITY CENTRE SPARSHOLT BURSARY

If your household income is under **£32,960** you could receive a bursary of up to **£750**. This can be used to help towards travel cost, books and equipment or anything else that will help you during your course.

Depending on the financial information disclosed in your Student Loan application, UCS may make an automatic bursary award based on specific criteria as set out in our Access and Participation Plan. If this is not the case you may still be able to apply for financial support to the UCS HE Bursary fund by completing a Bursary Application form in the December after you enrol.

For more information and to check your eligibility please email [degrees@sparsholt.ac.uk](mailto:degrees@sparsholt.ac.uk)

---

## ENHANCED LEARNING CREDITS

University Centre Sparsholt is an Approved Learning Provider for the Ministry of Defence's Enhanced Learning Credits (ELC) scheme. Under this scheme the MOD will pay up to 80% of your tuition fees for study at Level 3 or above for up to three years (NVQ3, Advanced National Certificate or Foundation Degrees).

---

## DISABLED STUDENTS ALLOWANCE

Students with a disability, long-term health condition, mental health condition or specific learning difficulty can also apply for extra financial support through Disabled Students Allowance (DSA). Depending on the nature of your difficulties, the DSA can provide funding for one-to-one specialist tuition, a contribution towards specialist equipment and/or assistive software. Please see [www.gov.uk/disabled-students-allowance-dsa](https://www.gov.uk/disabled-students-allowance-dsa)



## TRANSPORT

Students travel to UCS from across the region, so we aim to make the journey as easy and cost effective as possible. Whether you're getting the train from Southampton, Eastleigh, Totton or Basingstoke or the bus from across Hampshire and the county borders, we'll help you find the best way to get here.

Please check the map on the next page for your nearest location. If you need further information, please contact our Transport team on **01962 797346** or visit **[sparsholt.ac.uk/university-centre/transport](http://sparsholt.ac.uk/university-centre/transport)**

We offer a range of options including campus bus travel, which is our private fleet of buses that will pick up from the areas detailed in the map on the next page. For those not on the campus bus routes, there are public transport options with train and connecting buses straight to campus.

Payment for bus passes can be spread over 9 months at no extra cost. An initial deposit payment is required on application.

## PARKING

If you prefer to bring your car to UCS, student parking is available free of charge on-site. Parking is limited and is chargeable at University of Winchester Halls of Residence so students living there may find it easier to park their cars here at UCS and use public transport in the week, collecting their cars at the weekend.

## HOW TO FIND US

Our private fleet of buses will pick up from the areas highlighted.

If you need further information please contact our Transport team on

**01962 797346** or visit **[sparsholt.ac.uk/university-centre/transport](http://sparsholt.ac.uk/university-centre/transport)**



# INDEX

Access to Higher Education (Land-Based Studies)	26	Fisheries, Aquaculture and Marine Studies Facilities	88
Accommodation	17	Fisheries, Aquaculture and Marine Studies Experts	86
Accommodation Fees	124	Higher & Degree Apprenticeships	118
Additional Costs	125	How to Apply	122
Agriculture Courses	30	International Students	123
Agriculture Facilities	36	Loans	126
Agriculture Experts	34	Learn from the Experts	12
Animal Science and Zoo Biology Courses	44	Open Events	Back Cover
Animal Science and Zoo Biology Facilities	50	Research	15
Animal Science and Zoo Biology Experts	48	Short Courses	121
Campus	18	Student Finance	123
Career Connections	4	Student Life	16
Clubs and Societies	13	Study Support	19
Contact Details	Back Cover	Transport	127
Equestrian Science and Performance Management Courses	64	Trips, Research And New Opportunities	10
Equestrian Science and Performance Management Facilities	71	Tuition Fees	124
Equestrian Science and Performance Management Experts	68	UCAS Institution Code	122
Facilities	6	Veterinary Nursing Science Courses	96
Finance and Fees	124	Veterinary Nursing Science Facilities	102
Financial Support	126	Veterinary Nursing Science Experts	100
Find Us	128	Welcome	2
Fisheries, Aquaculture and Marine Studies Courses	82	Wildlife Ecology and Conservation Courses	106
		Wildlife Ecology and Conservation Experts	110
		Wildlife Ecology and Conservation Facilities	112

**Disclaimer:** University Centre Sparsholt (UCS) has checked the information given in this course guide. We will endeavour to deliver the courses in keeping with this course guide; however, changes may sometimes be required arising from annual monitoring, student feedback, review and update of modules and courses.

Where this activity leads to significant changes to modules and courses, there will be prior consultation of students and others, wherever possible, and UCS will take all reasonable steps to minimise disruption to students. It is also possible that UCS may not be able to offer a unit or course for reasons outside of its control, for example; the absence of a member of staff or low student registration numbers. Where this is the case, UCS will endeavour to inform applicants and students as soon as possible. Where appropriate, UCS will facilitate the transfer of affected students to another suitable course.

# OPEN EVENTS

VIEW DATES AND  
BOOK YOUR PLACE:



University Centre Sparsholt,  
Winchester  
Hampshire SO21 2NF

01962 776441  
[sparsholt.ac.uk](http://sparsholt.ac.uk)



An Associate College of



UNIVERSITY CENTRE  
**SPARSHOLT**

Sustainability is at the heart of everything we do. This prospectus is printed on FSC® certified paper, using vegetable based inks. We have also reduced the number of copies printed. This publication is fully recyclable.

Our cover image was captured at the spectacular Kimmeridge Bay, Dorset during a field trip visit for our FdSc Marine Ecology and Conservation Students.